

STANDARD INSTRUMENT  
DEPARTURE CHART  
(SID) - ICAO

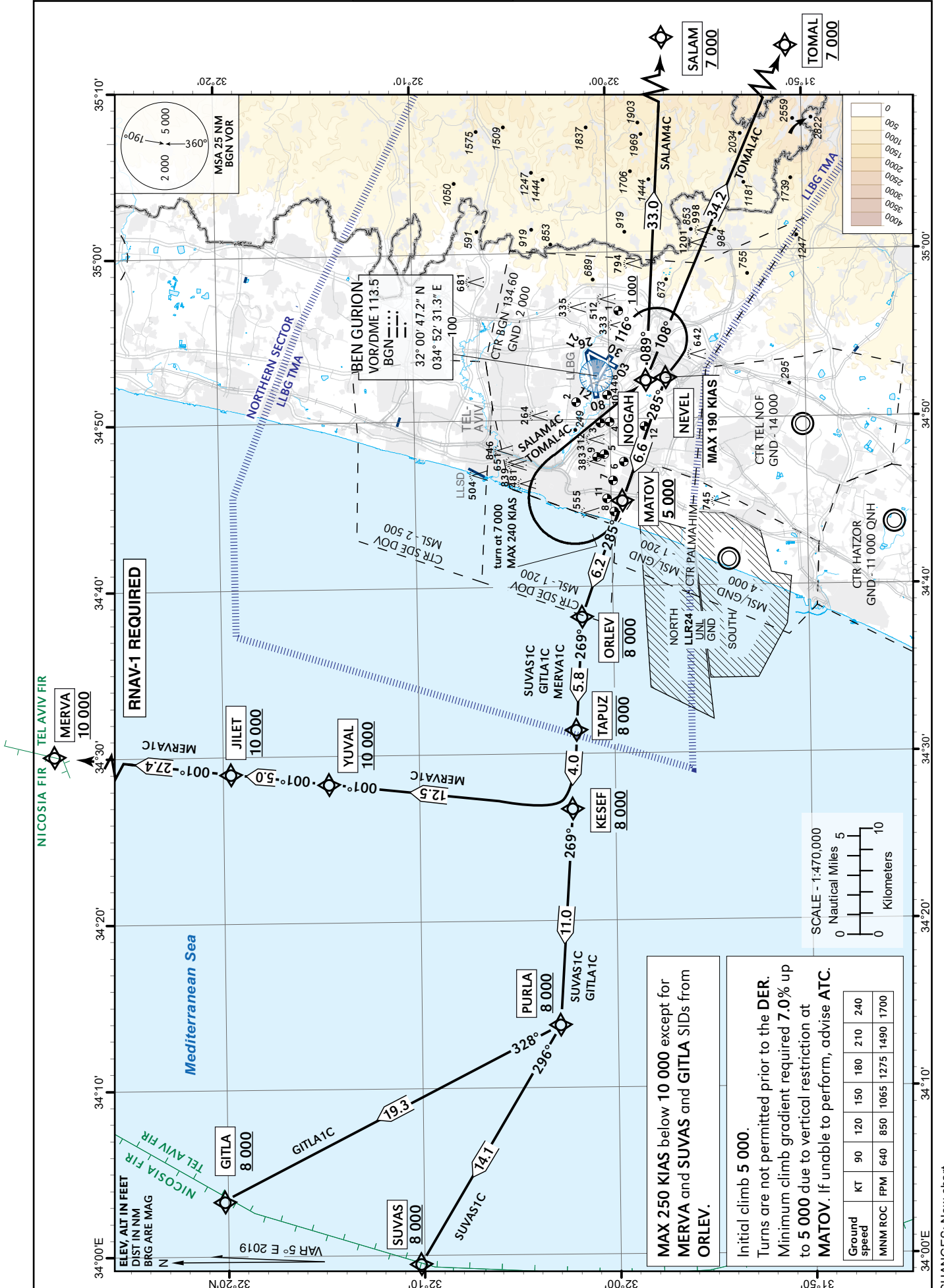
TRANSITION  
ALT 18 000 ft

ATIS departue 132.80  
TWR 134.60  
DEP 120.50  
ACC 121.40

TEL-AVIV / BEN-GURION (LLBG)

RWY 12

MERVA1C, SALAM4C, TOMAL4C, GITLA1C, SUVAS1C



Tabular description in AD 2.5-31A