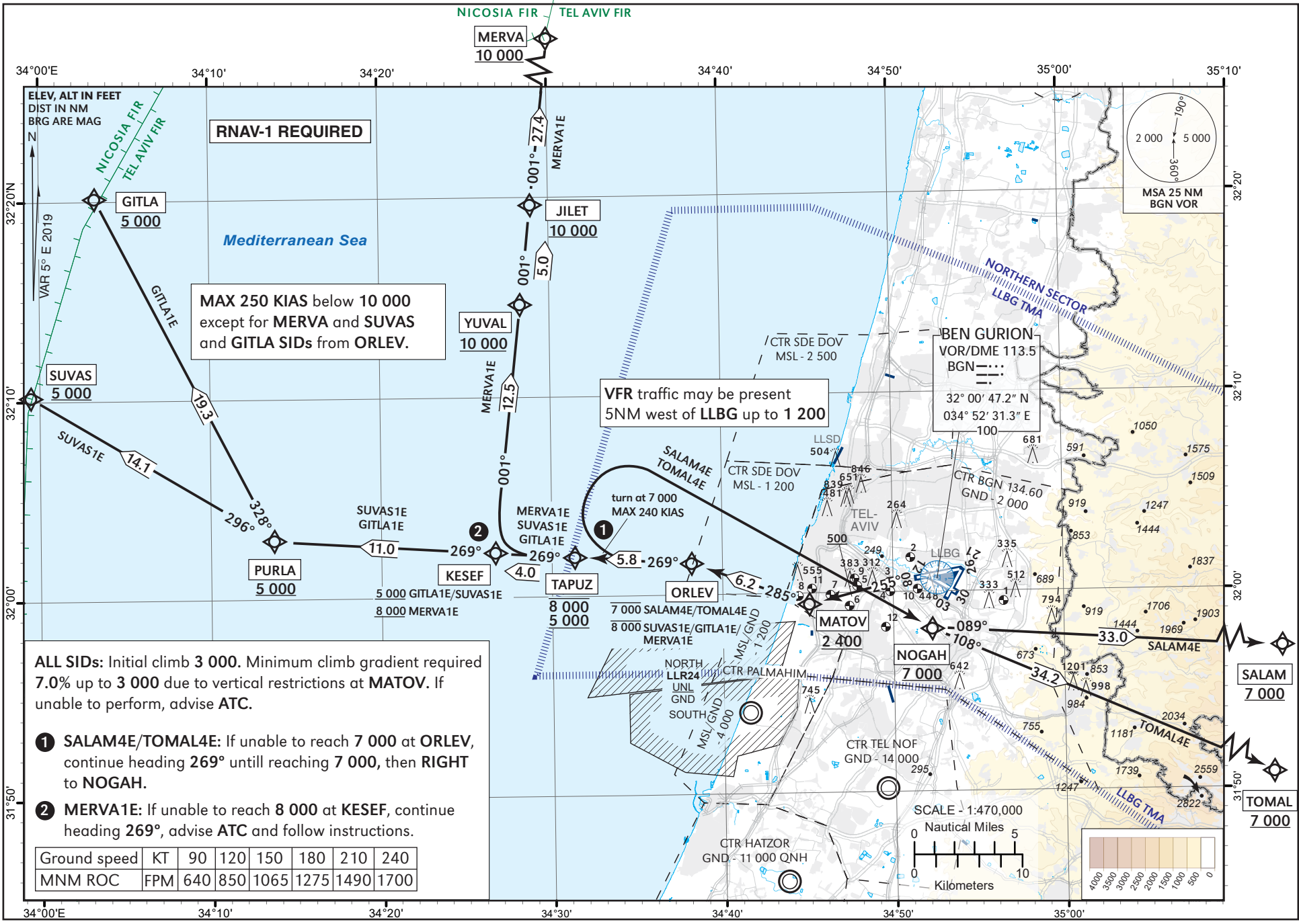


STANDARD DEPARTURE  
CHART - INSTRUMENT  
(SID) - ICAO

TRANSITION ALT 18 000

ATIS departure 132.80  
TWR 134.60  
DEP 120.50  
ACC 121.40

TEL-AVIV / BEN-GURION (LLBG)  
RWY 26  
SALAM4E, TOMAL4E,  
MERVA1E, GITLA1E, SUVAS1E



**RNAV-1 REQUIRED**

MAX 250 KIAS below 10 000  
except for MERVATE and SUVAS  
and GITLA SIDs from ORLEV.

VFR traffic may be present  
5NM west of LLBG up to 1 200

ALL SIDs: Initial climb 3 000. Minimum climb gradient required 7.0% up to 3 000 due to vertical restrictions at MATOV. If unable to perform, advise ATC.

- ① SALAM4E/TOMAL4E: If unable to reach 7 000 at ORLEV, continue heading 269° until reaching 7 000, then RIGHT to NOGAH.
- ② MERVATE: If unable to reach 8 000 at KESEF, continue heading 269°, advise ATC and follow instructions.

Ground speed	KT	90	120	150	180	210	240
MNM ROC	FPM	640	850	1065	1275	1490	1700

Tabular description in AD 2.5-32A