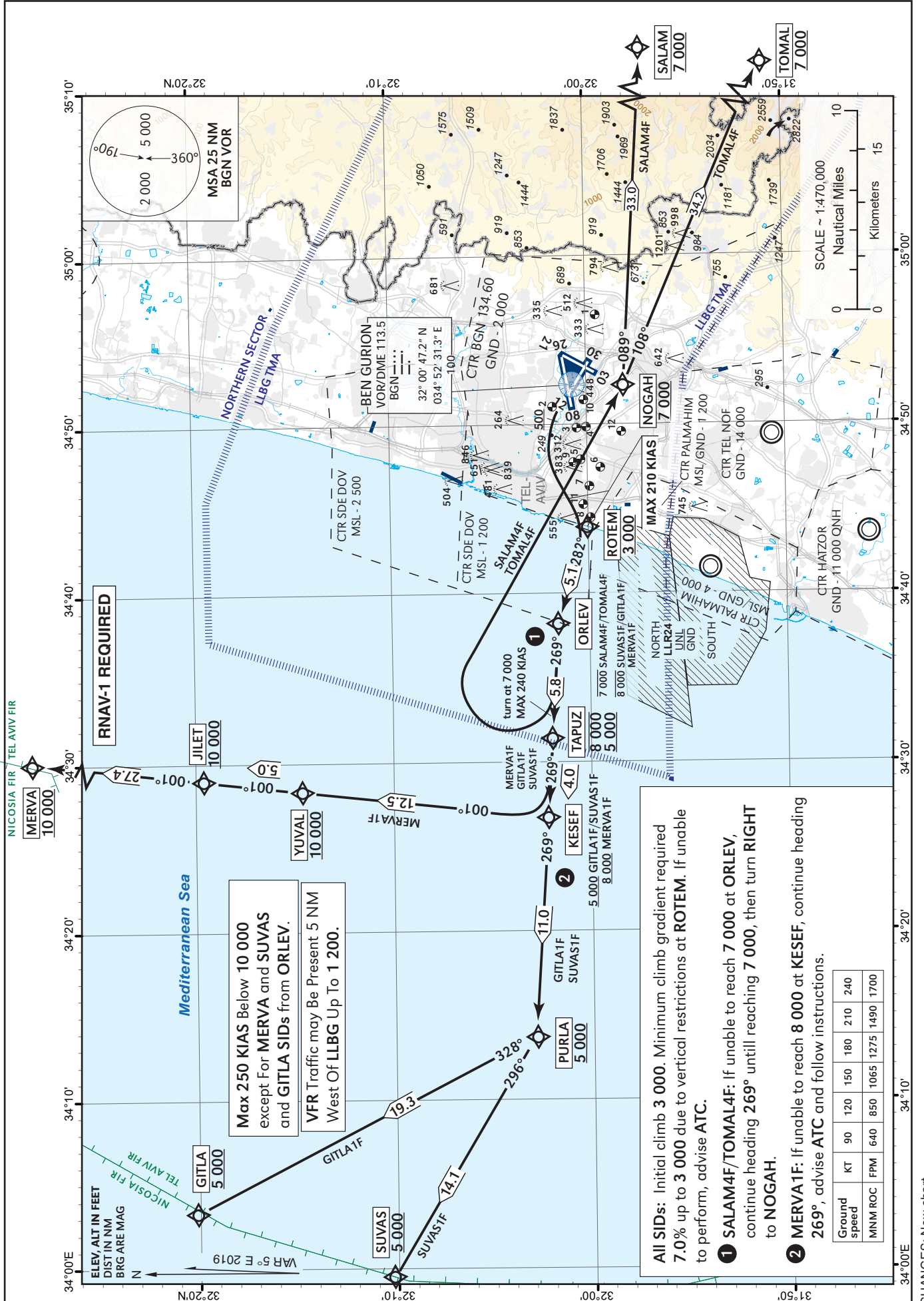


STANDARD DEPARTURE
CHART - INSTRUMENT
(SID) - ICAO

TRANSITION	ATIS departue	132.80
ALT 18 000	TWR	134.60
	DEP	120.50
	ACC	121.40

TEL-AVIV / BEN-GURION (LLBG)
RWY 30

SALAM4F, TOMAL4F, MERVA1F, GITLA1F, SUVAS1F



RNAV-1 REQUIRED

Max 250 KIAS Below 10 000
except For MERVA and SUVAS
and GITLA SIDs from ORLEV.

VFR Traffic may Be Present 5 NM
West Of LLBG Up To 1 200.

All SIDs: Initial climb 3 000. Minimum climb gradient required 7.0% up to 3 000 due to vertical restrictions at ROTEM. If unable to perform, advise ATC.

1 SALAM4F/TOMAL4F: If unable to reach 7 000 at ORLEV, continue heading 269° until reaching 7 000, then turn RIGHT to NOGAH.

2 MERVA1F: If unable to reach 8 000 at KESEF, continue heading 269°, advise ATC and follow instructions.

Ground speed	KT	90	120	150	180	210	240
MNM ROC	FPM	640	850	1065	1275	1490	1700

CHANGES: New chart

Tabular description in AD 2.5-33A