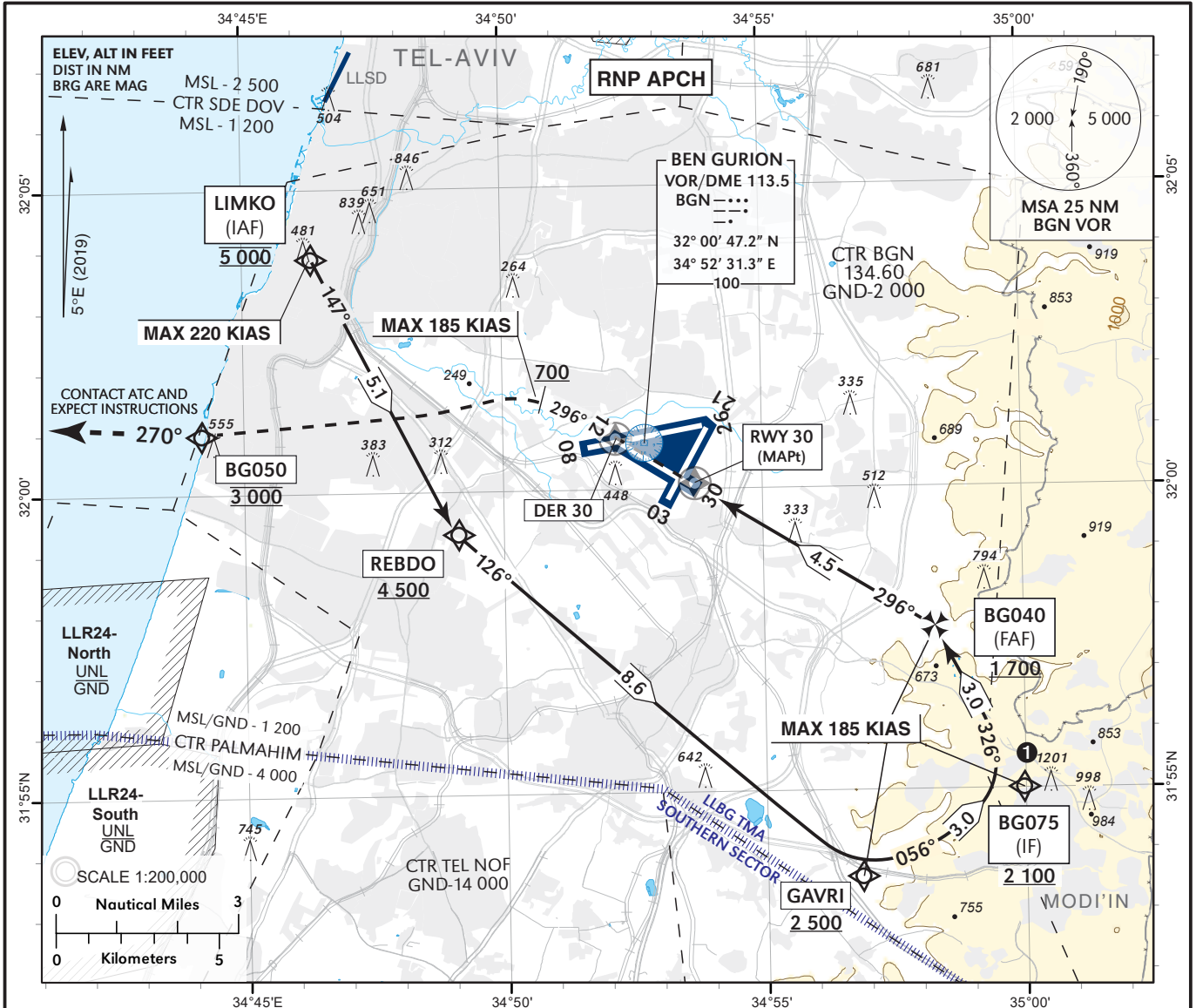


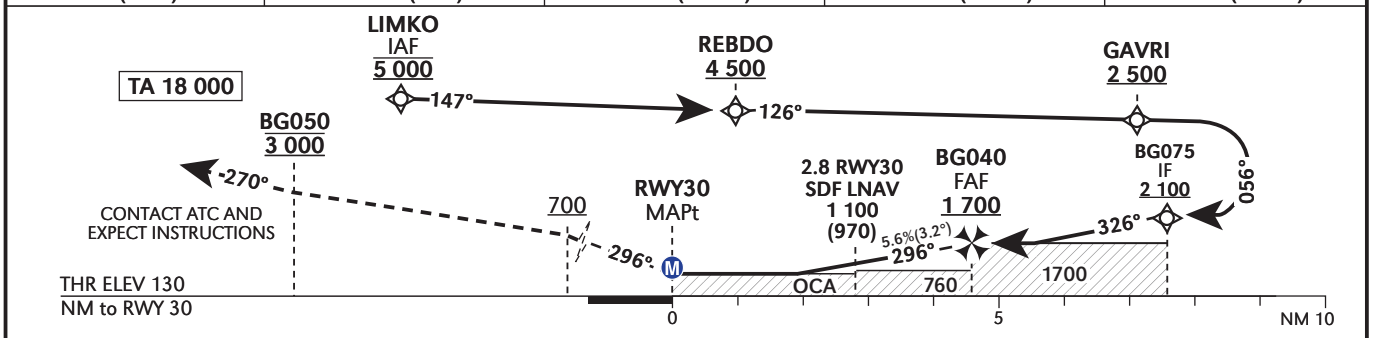
INSTRUMENT AD ELEV **134 ft**
APPROACH HEIGHTS RELATED TO
CHART - ICAO THR RWY 30 ELEV **130 ft**

ATIS 132.50
 APP 120.50
 TWR 134.60

TEL-AVIV/BEN-GURION (LLBG)
RNP X RWY 30



DIST THR	2	3	4	4.5
ALT (HGT)	870 (740)	1 210 (1 080)	1 550 (1 420)	1 700 (1 570)



MISSED APPROACH: Initial climb 3 000. Climb on course 296°, at or above 700, Not before DER 30, turn LEFT (MAX 185 KIAS) direct to BG050 at 3 000 (MAX 185 KIAS). Continue on track 270° at 3 000, contact ATC and expect instructions.

BG050 at 3 000 requires a 5.6% minimum climb gradient due to airspace restrictions, if unable inform ATC.

COMMUNICATION FAILURE: Initial climb 3 000. Climb on course 296° at or above 700, Not before DER 30, turn LEFT (MAX 185 KIAS) direct to BG050 at 3000 (MAX 185 KIAS) turn RIGHT To GODED at 5 000, join the holding, perform one holding pattern and execute the same approach again.

1 VFR traffic may be present East of WPT BG075 and South of WPT GAVRI.

OCA (OCH)		A	B	C	D		
LNAV	2.5%	580 (450)					
CIRCLING		N/A					
GS	kt	80	100	120	140	160	180
ROD: 5.6%	ft/min	453	567	680	794	907	1020

Procedure: RNP X RWY 30

Navigation Specification	Path Descriptor (Recommended)	Waypoint Identifier	Latitude Longitude	Flyover	Course/Track M° (T°)	Turn Direction	Distance (NM)	Altitude (ft)	Speed (Kts)	Remarks
RNAV 1	IF	LIMKO	32° 03' 48.0" N 034° 46' 18.0" E	-		-	-	@5 000	-220	IAF
RNAV 1	TF	REBDO	31° 59' 17.0" N 034° 49' 04.0" E	-	147 (152.4)	-	5.1	+4 500	-	
RNAV 1	TF	GAVRI	31° 53' 35.1" N 034° 56' 43.6" E	-	126 (131.1)	L	8.6	+2 500	-185	
RNAV 1	TF	BG075	31° 55' 01.3" N 034° 59' 49.3" E	-	056 (061.4)	L	3.0	+2 100	-185	IF
RNP APCH	TF	BG040	31° 57' 39.8" N 034° 58' 08.2" E	-	326 (331.4)	L	3.0	+1 700	-185	FAF
RNP APCH	TF	RWY30	31° 59' 59.9" N 034° 53' 39.1" E	Y	296 (301.4)	L	4.5	+180	-185	MAPt

Standard missed approach

Navigation Specification	Path Descriptor (Recommended)	Waypoint Identifier	Latitude Longitude	Flyover	Course/Track M° (T°)	Turn Direction	Distance (NM)	Altitude (ft)	Speed (Kts)	Remarks
RNP APCH	TF	DER30	32° 00' 51.1" N 034° 52' 00.6" E	Y	296 (301.4)	L	1.7	+700	-185	
RNAV 1	CA	-		-	296 (301.4)		-	+700	-185	
RNAV 1	DF	BG050	32° 00' 55.9" N 034° 44' 05.9" E	-		L	-	@3 000		
RNAV 1	FM	BG050	32° 00' 55.9" N 034° 44' 05.9" E	-	270 (275.4)	R	-	@3 000		

Non Precision Final Approach – Slope (Descent angle)	5.60% (3.20°)
--	------------------

Holding Identification

Holding Fix	Latitude Longitude	Inbound Course/Track M° (T°)	Altitude (ft)	Outbound Time / Distance	Turn Direction
GODED	32° 09' 54" N 034° 34' 22" E	115.0 (120.3)	+5 000	1 Min	L