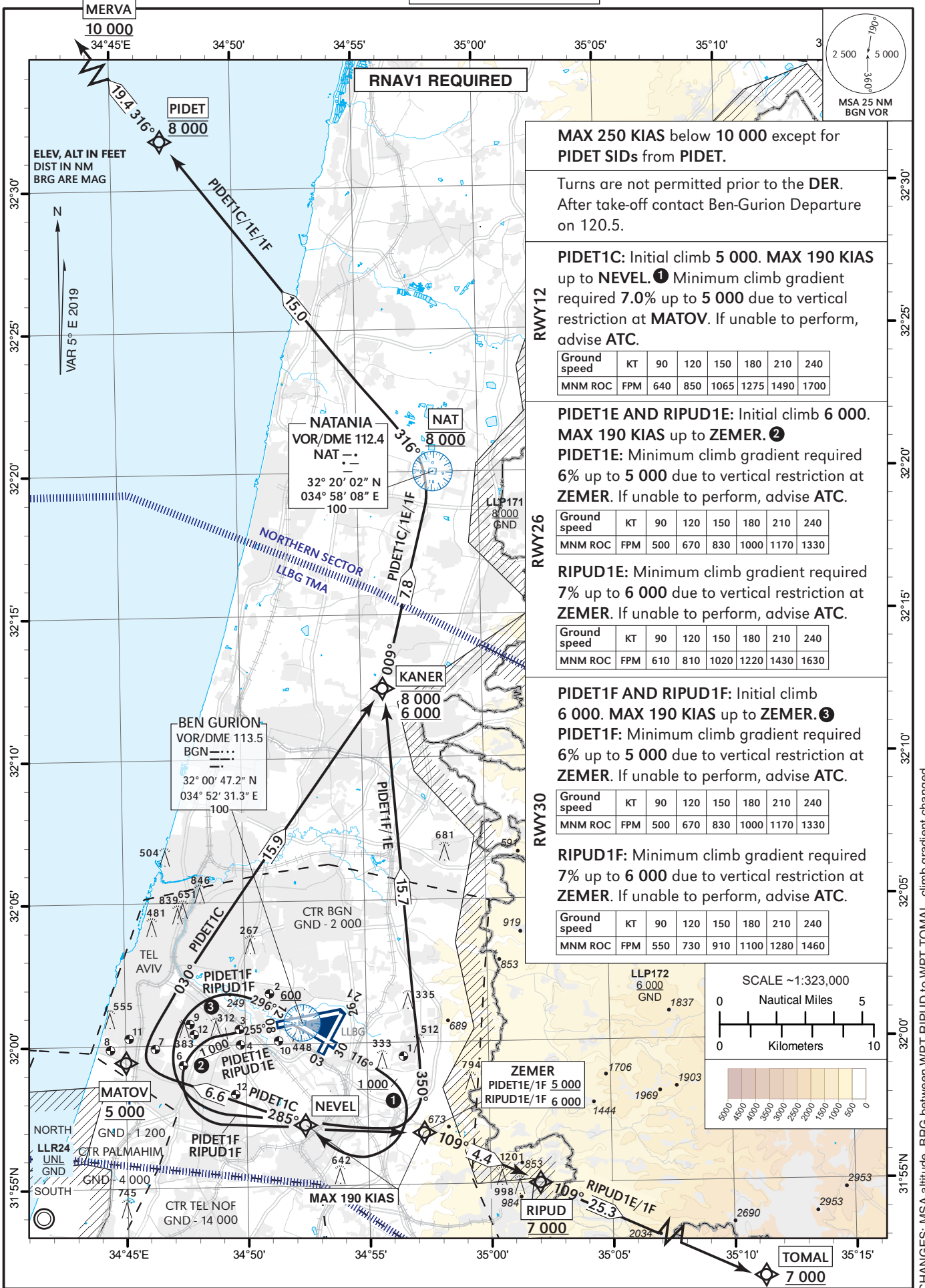


STANDARD DEPARTURE  
CHART - INSTRUMENT  
(SID) - ICAO

TRANSITION ALT 18 000

ATIS departure	132.80
TWR	134.60
DEP	120.50
ACC	121.40

TEL-AVIV / BEN-GURION (LLBG)  
RWYs 12, 26, 30  
PIDET 1C/1E/1F, RIPUD 1E/1F



**MAX 250 KIAS** below 10 000 except for PIDET SIDs from PIDET.  
Turns are not permitted prior to the DER. After take-off contact Ben-Gurion Departure on 120.5.

**PIDET1C:** Initial climb 5 000. **MAX 190 KIAS** up to NEVEL. ① Minimum climb gradient required 7.0% up to 5 000 due to vertical restriction at MATOV. If unable to perform, advise ATC.

Ground speed	KT	90	120	150	180	210	240
MNM ROC	FPM	640	850	1065	1275	1490	1700

**PIDET1E AND RIPUD1E:** Initial climb 6 000. **MAX 190 KIAS** up to ZEMER. ② **PIDET1E:** Minimum climb gradient required 6% up to 5 000 due to vertical restriction at ZEMER. If unable to perform, advise ATC.

Ground speed	KT	90	120	150	180	210	240
MNM ROC	FPM	500	670	830	1000	1170	1330

**RIPUD1E:** Minimum climb gradient required 7% up to 6 000 due to vertical restriction at ZEMER. If unable to perform, advise ATC.

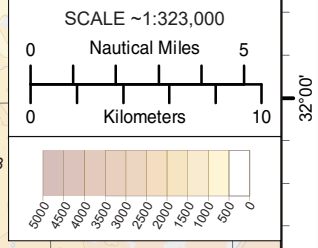
Ground speed	KT	90	120	150	180	210	240
MNM ROC	FPM	610	810	1020	1220	1430	1630

**PIDET1F AND RIPUD1F:** Initial climb 6 000. **MAX 190 KIAS** up to ZEMER. ③ **PIDET1F:** Minimum climb gradient required 6% up to 5 000 due to vertical restriction at ZEMER. If unable to perform, advise ATC.

Ground speed	KT	90	120	150	180	210	240
MNM ROC	FPM	500	670	830	1000	1170	1330

**RIPUD1F:** Minimum climb gradient required 7% up to 6 000 due to vertical restriction at ZEMER. If unable to perform, advise ATC.

Ground speed	KT	90	120	150	180	210	240
MNM ROC	FPM	550	730	910	1100	1280	1460



CHANGES: MSA altitude, BRG between WPT RIPUD to WPT TOMAL, climb gradient changed

**PIDET 1C SID RWY 12**

Navigation Specification	Path Descriptor (Recommended)	Waypoint Identifier	Latitude Longitude	Fly-Over	Course/Track M° (T°)	Distance (NM)	Turn Direction	Altitude (ft)	Speed (Kts)	Remarks
RNAV1	CA				116 (121.4)			+1 000	-190	
RNAV1	DF	NEVEL	31° 57' 08.1"N 034° 52' 25.5" E				R		-190	
RNAV1	TF	MATOV	31° 59' 26.0"N 034° 45' 06.0" E		285 (290.2)	6.6		+5 000		
RNAV1	TF	KANER	32° 12' 28.0"N 034° 55' 55.0" E		030 (035.2)	15.9	R	-8 000 +6 000	-250	
RNAV1	TF	NAT	32° 20' 02.0"N 034° 58' 08.0" E		009 (014.0)	7.8	L	@8 000	-250	
RNAV1	TF	PIDET	32° 31' 46.0"N 034° 47' 03.0" E		316 (321.4)	15.0	L	@8 000	-250	
RNAV1	TF	MERVA	32° 46' 54.0"N 034° 32' 38.0" E		316 (321.2)	19.4		+10 000		

**PIDET 1E SID RWY 26**

Navigation Specification	Path Descriptor (Recommended)	Waypoint Identifier	Latitude Longitude	Fly-Over	Course/Track M° (T°)	Distance (NM)	Turn Direction	Altitude (ft)	Speed (Kts)	Remarks
RNAV1	CA				255 (259.8)			+1 000	-190	
RNAV1	DF	ZEMER	31° 56' 48.6"N 034° 57' 22.2" E				L	+5 000	-190	
RNAV1	TF	KANER	32° 12' 28.0"N 034° 55' 55.0" E		350 (355.5)	15.7	L	-8 000 +6 000	-250	
RNAV1	TF	NAT	32° 20' 02.0"N 034° 58' 08.0" E		009 (014.0)	7.8	R	@8 000	-250	
RNAV1	TF	PIDET	32° 31' 46.0"N 034° 47' 03.0" E		316 (321.4)	15.0	L	@8 000	-250	
RNAV1	TF	MERVA	32° 46' 54.0"N 034° 32' 38.0" E		316 (321.2)	19.4		+10 000		

**PIDET 1F SID RWY 30**

Navigation Specification	Path Descriptor (Recommended)	Waypoint Identifier	Latitude Longitude	Fly-Over	Course/Track M° (T°)	Distance (NM)	Turn Direction	Altitude (ft)	Speed (Kts)	Remarks
RNAV1	CA				296 (301.4)			+600	-190	
RNAV1	DF	ZEMER	31° 56' 48.6"N 034° 57' 22.2" E				L	+5 000	-190	
RNAV1	TF	KANER	32° 12' 28.0"N 034° 55' 55.0" E		350 (355.5)	15.7	L	-8 000 +6 000	-250	
RNAV1	TF	NAT	32° 20' 02.0"N 034° 58' 08.0" E		009 (014.0)	7.8	R	@8 000	-250	
RNAV1	TF	PIDET	32° 31' 46.0"N 034° 47' 03.0" E		316 (321.4)	15.0	L	@8 000	-250	
RNAV1	TF	MERVA	32° 46' 54.0"N 034° 32' 38.0" E		316 (321.2)	19.4		+10 000		

**RIPUD 1E SID RWY 26**

Navigation Specification	Path Descriptor (Recommended)	Waypoint Identifier	Latitude Longitude	Fly-Over	Course/Track M° (T°)	Distance (NM)	Turn Direction	Altitude (ft)	Speed (Kts)	Remarks
RNAV1	CA				255 (259.8)			+1 000	-190	
RNAV1	DF	ZEMER	31° 56' 48.6"N 034° 57' 22.2" E				L	+6 000	-190	
RNAV1	TF	RIPUD	31° 54' 59.5"N 035° 02' 05.0" E		109 (114.3)	4.4	R	+7 000	-250	
RNAV1	TF	TOMAL	31° 44' 29.0"N 035° 29' 06.0" E		109 (114.4)	25.3		+7 000	-250	

**RIPUD 1F SID RWY 30**

Navigation Specification	Path Descriptor (Recommended)	Waypoint Identifier	Latitude Longitude	Fly-Over	Course/Track M° (T°)	Distance (NM)	Turn Direction	Altitude (ft)	Speed (Kts)	Remarks
RNAV1	CA				296 (301.4)			+600	-190	
RNAV1	DF	ZEMER	31° 56' 48.6"N 034° 57' 22.2" E				L	+6 000	-190	
RNAV1	TF	RIPUD	31° 54' 59.5"N 035° 02' 05.0" E		109 (114.3)	4.4	R	+7 000	-250	
RNAV1	TF	TOMAL	31° 44' 29.0"N 035° 29' 06.0" E		109 (114.4)	25.3		+7 000	-250	