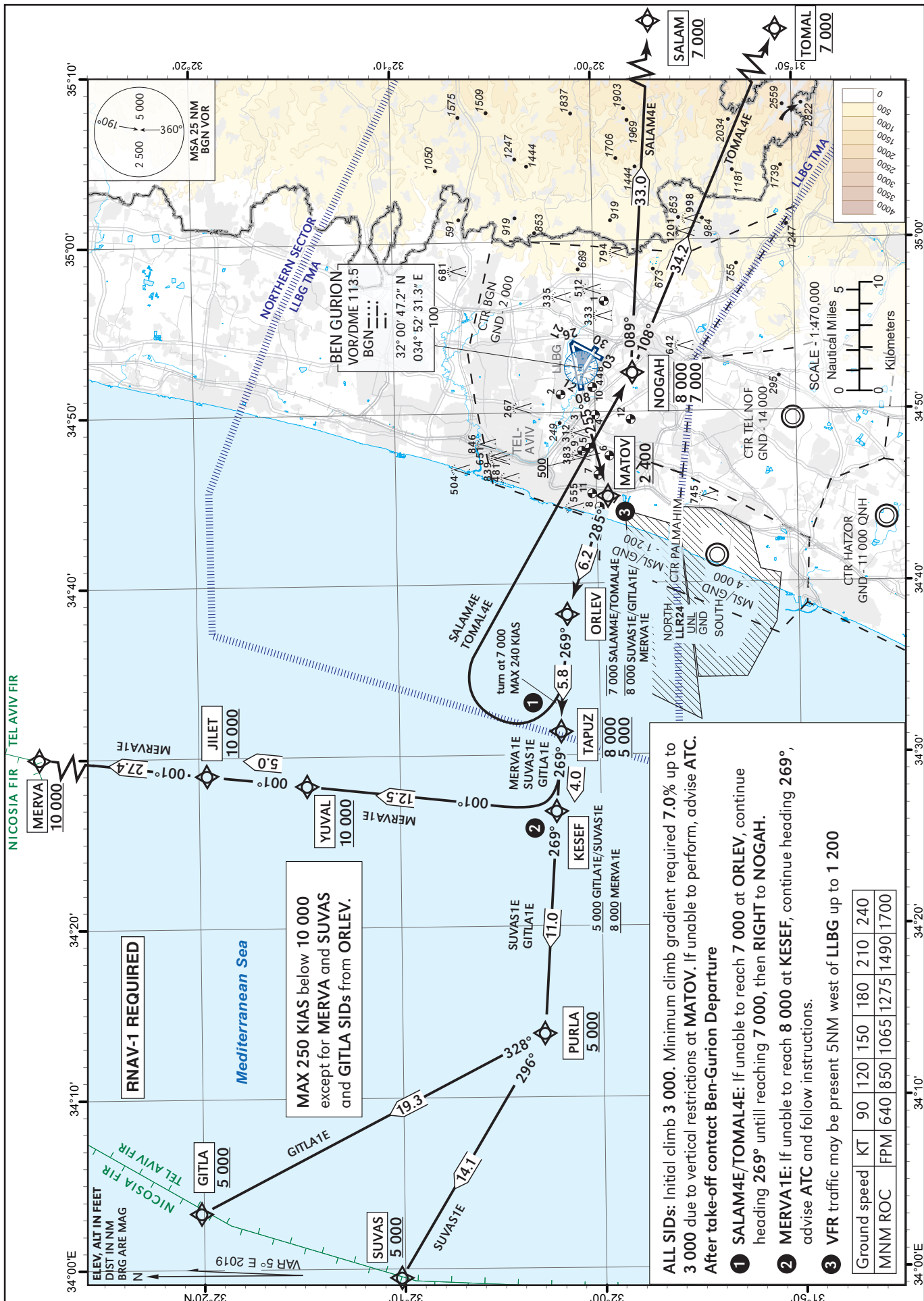


STANDARD DEPARTURE
CHART - INSTRUMENT
(SID) - ICAO

TRANSITION ALT 18 000

ATIS departue 132.80
TWR 134.60
DEP 120.50
ACC 121.40

TEL-AVIV / BEN-GURION (LLBG)
RWY 26
SALAM4E, TOMAL4E,
MERVA1E, GITLA1E, SUVAS1E



ALL SIDs: Initial climb 3 000. Minimum climb gradient required 7.0% up to 3 000 due to vertical restrictions at MATOV. If unable to perform, advise ATC.
After take-off contact Ben-Gurion Departure

- 1 SALAM4E/TOMAL4E:** If unable to reach 7 000 at ORLEV, continue heading 269° until reaching 7 000, then RIGHT to NOGAH.
- 2 MERVA1E:** If unable to reach 8 000 at KESEF, continue heading 269°, advise ATC and follow instructions.
- 3 VFR traffic** may be present 5NM west of LLBG up to 1 200

Ground speed	KT	90	120	150	180	210	240
MMN ROC	FPM	640	850	1065	1275	1490	1700

Tabular description in AD 2.5-32A