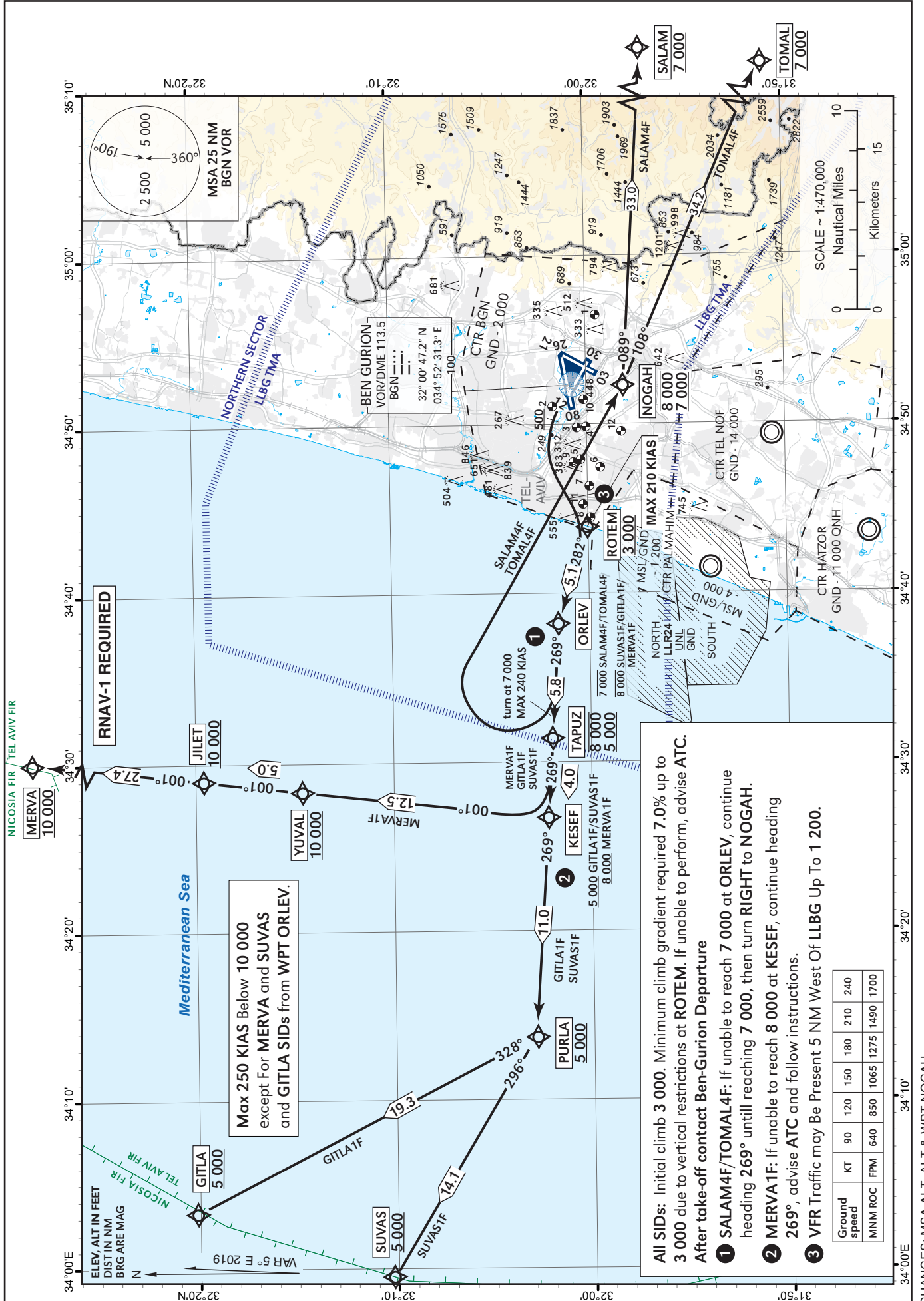


STANDARD DEPARTURE
CHART - INSTRUMENT
(SID) - ICAO

TRANSITION	ATIS departue	132.80
ALT 18 000	TWR	134.60
	DEP	120.50
	ACC	121.40

TEL-AVIV / BEN-GURION (LLBG)
RWY 30

SALAM4F, TOMAL4F, MERVA1F, GITLA1F, SUVAS1F



All SIDs: Initial climb 3 000. Minimum climb gradient required 7.0% up to 3 000 due to vertical restrictions at ROTEM. If unable to perform, advise ATC.
After take-off contact Ben-Gurion Departure

- SALAM4F/TOMAL4F:** If unable to reach 7 000 at ORLEV, continue heading 269° until reaching 7 000, then turn RIGHT to NOGAH.
- MERVA1F:** If unable to reach 8 000 at KESEF, continue heading 269°, advise ATC and follow instructions.
- VFR Traffic may Be Present 5 NM West Of LLBG Up To 1 200.**

Max 250 KIAS Below 10 000 except For MERVA and SUVAS and GITLA SIDs from WPT ORLEV.

RNAV-1 REQUIRED

NICOSIA FIR TEL AVIV FIR

Tabular description in AD 2.5-33A