

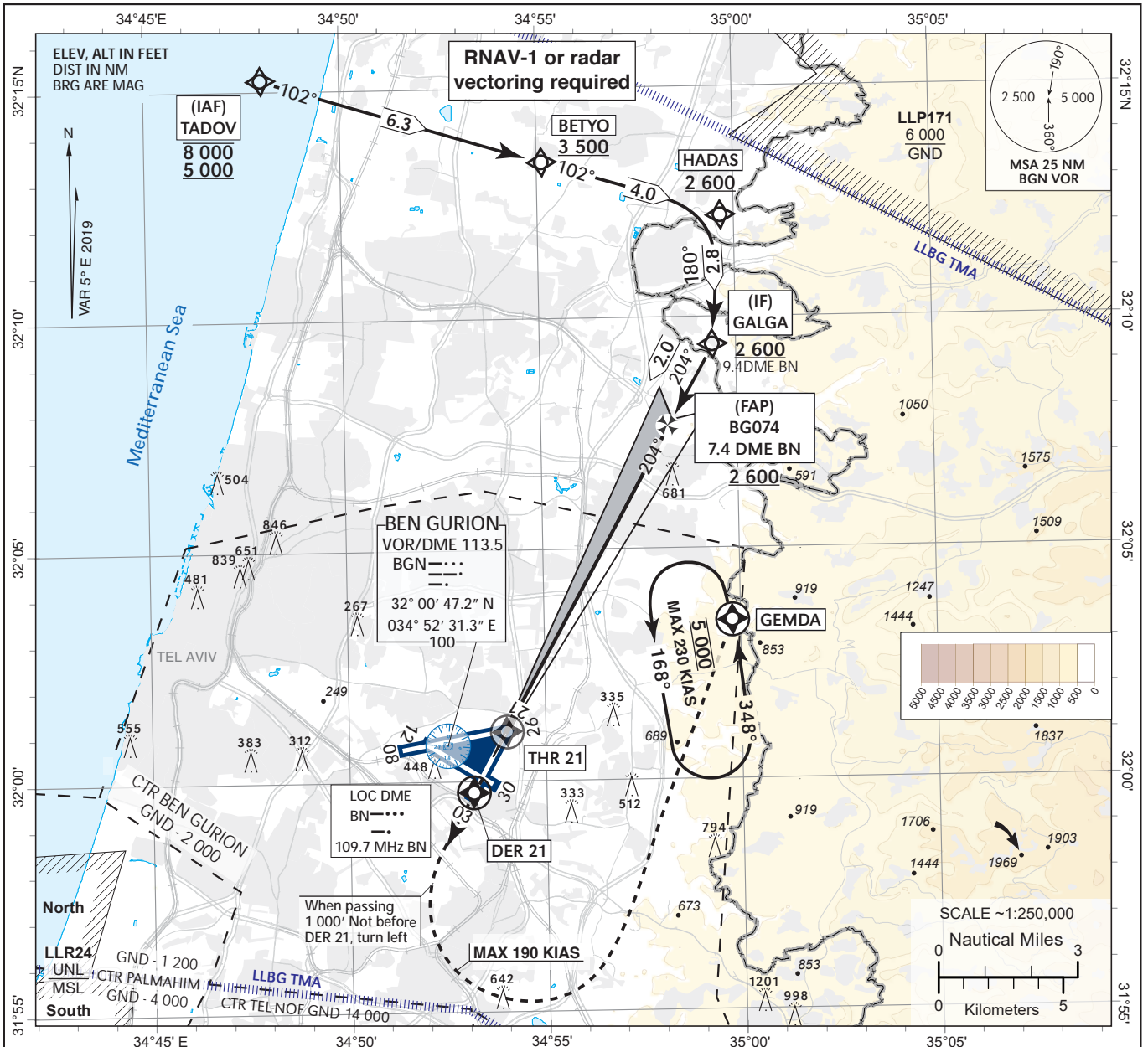
**INSTRUMENT
APPROACH
CHART - ICAO**

TRANSITION ALT 18 000

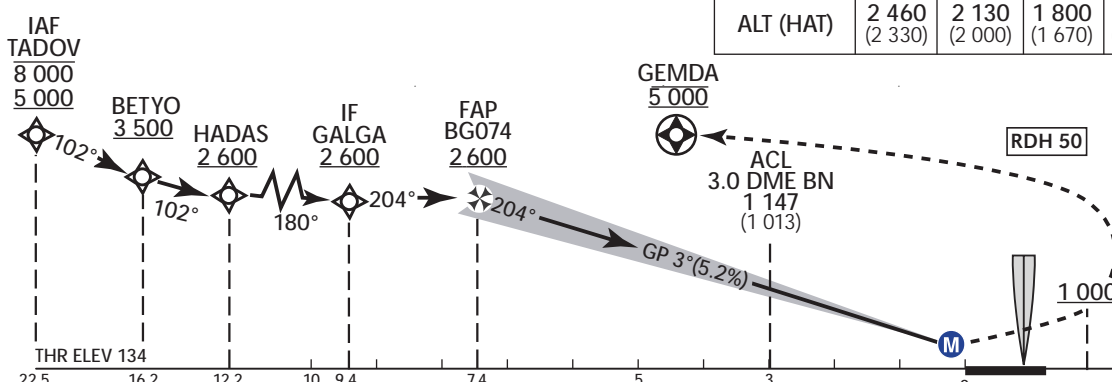
AERODROME ELEV 134 ft
HEIGHTS RELATED TO
THR ELEV 134 ft

ARR 131.10
TWR 132.10

TEL-AVIV / BEN-GURION (LLBG)
ILS RWY 21



BN ILS DME	7	6	5	4	3	2
ALT (HAT)	2 460 (2 330)	2 130 (2 000)	1 800 (1 670)	1 480 (1 340)	1 150 (1 020)	830 (700)



THR ELEV 134
22.5 BN DME reads 0 at THR
NM to THR RWY 21

		OCA(H)			
STA	ILS CAT I	A	B	C	D
		4.5% up to 5,000	291 (157)	303 (169)	311 (177)
	2.5% up to 5,000	503 (369)	515 (381)	523 (389)	534 (400)
CIRCLING		N/A			

MISSED APPROACH:
Initial climb 5 000. Climb straight to DER 21. Upon reaching 1 000 turn LEFT (MAX 190 KIAS) to GEMDA 5 000 and HOLD.
Note: Climb GRAD. requirement of 4.5% (270/NM) due to airspace restrictions.
If unable to comply utilize 2.5% OCA/H and advise ATC.

CHANGES: revision of the procedure

ILS RWY 21

Navigation Specification	Path Descriptor (Recommended)	Waypoint Identifier	Latitude Longitude	Fly-Over	Course/Track M° (T°)	Distance (NM)	Turn Direction	Altitude (ft)	Speed (Kts)	Remarks
RNAV1	IF	TADOV	32° 15' 15"N 034° 48' 00" E					-8 000 +5 000	-230	IAF
RNAV1	TF	BETYO	32° 13' 24"N 034° 55' 08" E		102 (106.9)	6.3		+3 500	-230	
RNAV1	TF	HADAS	32° 12' 13"N 034° 59' 40" E		102 (107.0)	4.0		+2 600	-185	
RNAV1	TF	GALGA	32° 09' 25"N 034° 59' 24" E		180 (184.6)	2.8		+2 600	-160	IF
RNAV1	TF	BG074	32° 07' 36.81"N 034° 58' 13.95" E		204 (208.9)	2.0		+2 600	-160	FAP
RNAV1	CF	THR21	32° 01' 05.25"N 034° 54' 00.81" E	Y	204 (208.9)	7.4		+183		

RWY21 Intermediate and Final Approach

FIX	Latitude Longitude	True Azimuth (reference)	DME distance
IF	31° 09' 25"N 034° 59' 24" E	208.8 (LOC 21)	9.5 DME BN* 10.4 DME BGN
FAP	32° 07' 36.81"N 034° 58' 13.95" E	208.8 (LOC 21)	7.4 DME BN* 8.4 DME BGN
THR21	32° 01' 05.25"N 034° 54' 00.81" E	208.8 (LOC 21)	
			* 0 at THR

STANDARD MISSED APPROACH

Navigation Specification	Path Descriptor (Recommended)	Waypoint Identifier	Latitude Longitude	Fly-Over	Course/Track M° (T°)	Distance (NM)	Turn Direction	Altitude (ft)	Speed (Kts)	Remarks
RNAV1	CF	DER21	31° 59' 46.38"N 034° 53' 09.89" E	Y	204 (208.8)					
RNAV1	CA				204 (208.8)			+1 000		
RNAV1	DF	GEMDA	32° 03' 26"N 034° 59' 48" E	Y						

HOLDING IDENTIFICATION

Holding Fix	Latitude Longitude	Inbound Course/Track M° (T°)	MAX IAS (Kts)	Altitude (ft)	Outbound Time / Distance	Turn Direction
GEMDA	32° 03' 26"N 034° 59' 48" E	348 (353)	-230	@5 000	1 min	L