

**INSTRUMENT
APPROACH
CHART - ICAO**

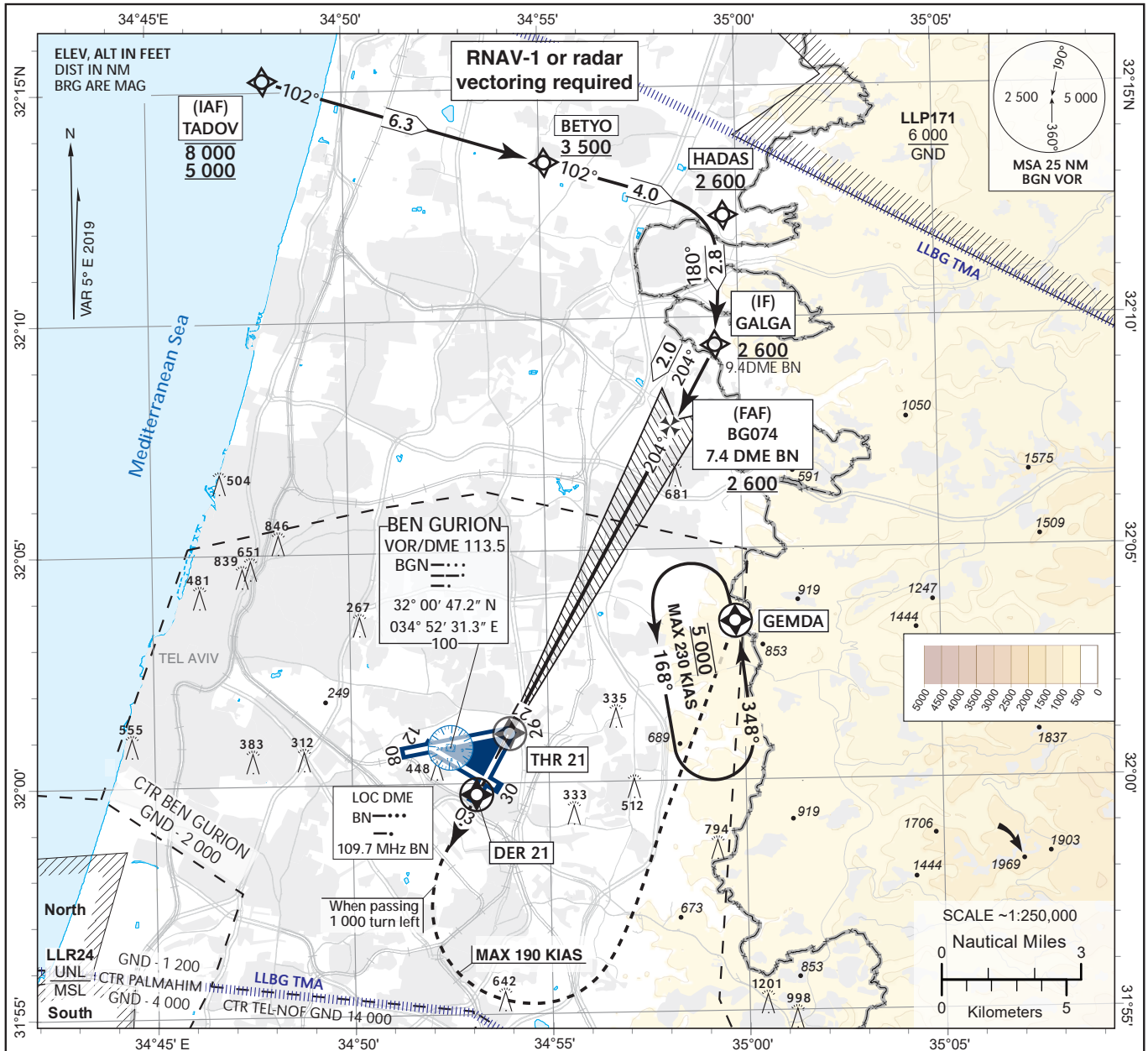
TRANSITION ALT 18 000

AERODROME ELEV 134 ft
HEIGHTS RELATED TO
THR ELEV 134 ft

ARR 131.10
TWR 132.10

TEL-AVIV / BEN-GURION (LLBG)

LOC RWY 21



BN ILS DME	7	6	5	4	3	2
ALT (HAT)	2 460 (2 330)	2 140 (2 000)	1 810 (1 680)	1 490 (1 350)	1 160 (1 030)	840 (700)

IAF
TADOV
8 000
5 000

BETYO
3 500

HADAS
2 600

IF
GALGA
2 600

FAF
BG074
2 600

GEMDA
5 000

RDH 50

THR ELEV 134

22.5
BN DME reads 0 at THR
NM to THR RWY 21

16.2

12.2

10

9.4

7.4

5

4

3

2

1

0

OCA

OCA

MAPt
RWY21
0.0 DME BN

1 000

600

840
(689)

1 490
(1 339)

GP 5.4%(3.1°)

1 000

1 000

1 000

1 000

1 000

1 000

1 000

1 000

1 000

1 000

1 000

1 000

MISSED APPROACH:
Initial climb 5 000.
Climb straight to DER
21. Upon reaching
1 000 turn LEFT
(MAX 190 KIAS) to
GEMDA 5 000 and
HOLD.
Note: Climb GRAD.
requirement of 4.5%
(270/NM) due to
airspace restrictions.
If unable to comply
utilize 2.5% OCA/H
and advise ATC.

OCA/(H)	A	B	C	D
STA LOC	930 (796)			
CIRCLING	N/A			

GS	KT	90	100	120	140	160	180
FAP-MAPT: 7.4NM							
ROD: 5.3 %	ft/min	433	542	650	758	867	975

LOC RWY 21

Navigation Specification	Path Descriptor (Recommended)	Waypoint Identifier	Latitude Longitude	Fly-Over	Course/Track M° (T°)	Distance (NM)	Turn Direction	Altitude (ft)	Speed (Kts)	Remarks
RNAV1	IF	TADOV	32° 15' 15"N 034° 48' 00" E					-8 000 +5 000	-230	IAF
RNAV1	TF	BETYO	32° 13' 24"N 034° 55' 08" E		102 (106.9)	6.3		+3 500	-230	
RNAV1	TF	HADAS	32° 12' 13"N 034° 59' 40" E		102 (107.0)	4.0		+2 600	-185	
RNAV1	TF	GALGA	32° 09' 25"N 034° 59' 24" E		180 (184.6)	2.8		+2 600	-160	IF
RNAV1	TF	BG074	32° 07' 36.81"N 034° 58' 13.95" E		204 (208.9)	2.0		+2 600	-160	FAF
RNAV1	CF	THR21	32° 01' 05.25"N 034° 54' 00.81" E	Y	204 (208.9)	7.4		+183		MAPt

STANDARD MISSED APPROACH

Navigation Specification	Path Descriptor (Recommended)	Waypoint Identifier	Latitude Longitude	Fly-Over	Course/Track M° (T°)	Distance (NM)	Turn Direction	Altitude (ft)	Speed (Kts)	Remarks
RNAV1	CF	DER21	31° 59' 46.38"N 034° 53' 09.89" E	Y	204 (208.8)	1.5				
RNAV1	CA				204 (208.8)			+1 000		
RNAV1	DF	GEMDA	32° 03' 26"N 034° 59' 48" E	Y				@5 000	-190	MAHF

HOLDING IDENTIFICATION

Holding Fix	Latitude Longitude	Inbound Course/Track M° (T°)	MAX IAS (Kts)	Altitude (ft)	Outbound Time / Distance	Turn Direction
GEMDA	32° 03' 26"N 034° 59' 48" E	348 (353)	-230	@5 000	1 min	L