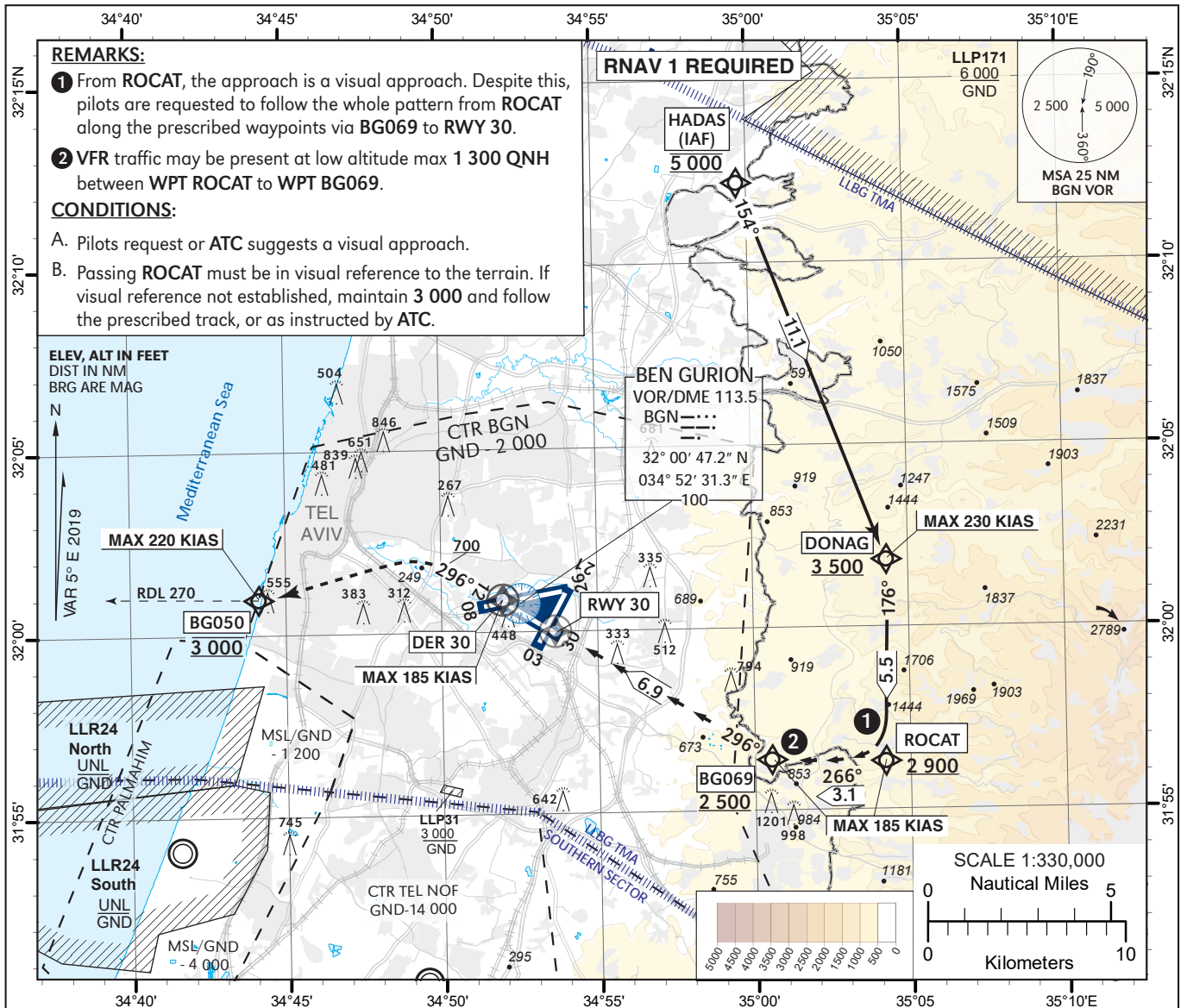


**VISUAL  
APPROACH CHART**  
(with prescribed RNAV track)  
- ICAO

**AERODROME ELEV 134 ft**  
**HEIGHTS RELATED TO  
THR RWY 30 - ELEV 130 ft**

**ATIS ARRIVAL 132.50**  
**APP 120.50**  
**TWR 134.60**

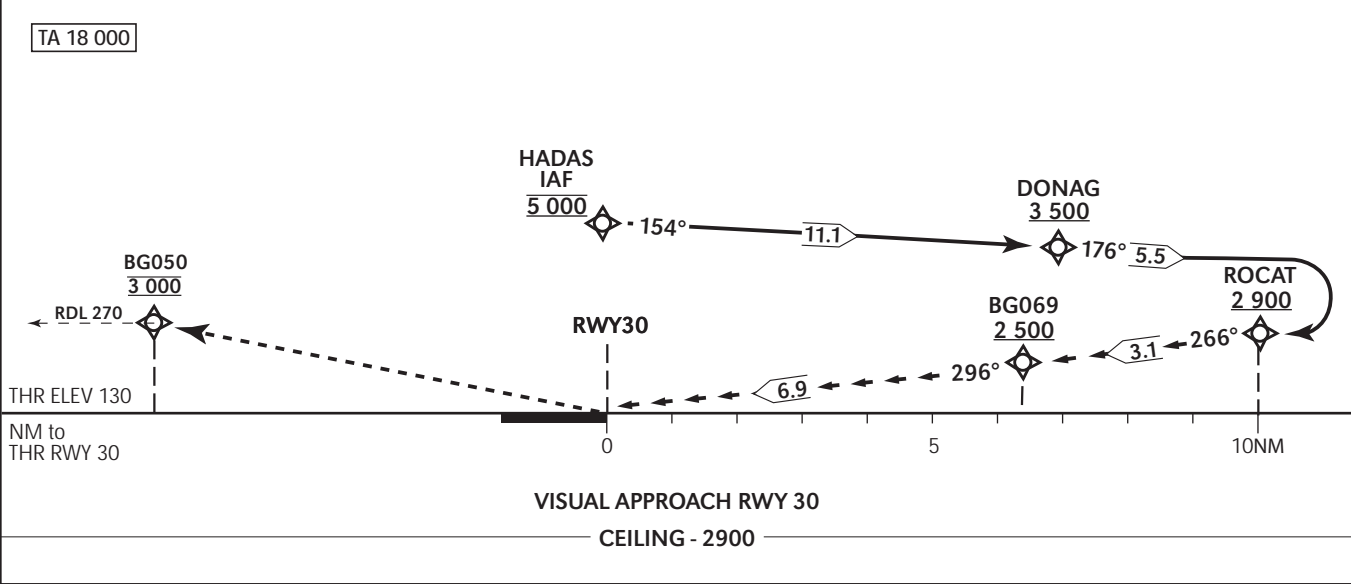
**TEL-AVIV / BEN-GURION  
(LLBG)  
DONAG APPROACH RWY 30**



**GO AROUND ON THE VISUAL SEGMENT OF THE APPROACH:**  
Initial climb **3 000**. Climb on course **296°**, at or above **700 (MAX 185 KIAS)**, Not before **DER 30**. Turn **LEFT** direct to **BG050** at **3 000**. Continue on track **270°** at **3 000**, contact **ATC** and expect instructions.

**Recommended crossing altitudes**

RWY30	2	3	4	5	6
ALT (HGT)	870 (740)	1210 (1080)	1550 (1420)	1890 (1760)	2230 (2100)



Procedure: DONAG APPROACH RWY 30

Navigation Specification	Path Descriptor (Recommended)	Waypoint Identifier	Latitude Longitude	Flyover	Course/Track M° (T°)	Turn Direction	Distance (NM)	Altitude (ft)	Speed (Kts)	Remarks
RNAV 1	IF	HADAS	32° 12' 13.0"N 034° 59' 40.0" E					@5 000	-	IAF
RNAV 1	TF	DONAG	32° 01' 50.4"N 035° 04' 20.6" E		154 (159.0)		11.1	+3 500	-230	
RNAV 1	TF	ROCAT	31° 56' 19.8"N 035° 04' 11.1" E		176 (181.4)	R	5.5	+2 900	-185	
RNP APCH	TF	BG069	31° 56' 24.4"N 035° 00' 32.6" E		266 (271.4)	R	3.1	+2 500	-185	
RNP APCH	TF	RWY30	31° 59' 59.9"N 034° 53' 39.1" E	Y	296 (301.4)	R	6.9	+180	-185	

Go Around

Navigation Specification	Path Descriptor (Recommended)	Waypoint Identifier	Latitude Longitude	Flyover	Course/Track M° (T°)	Turn Direction	Distance (NM)	Altitude (ft)	Speed (Kts)	Remarks
RNAV 1	TF	DER30	32° 00' 51.1"N 034° 52' 00.6" E	Y	296 (301.4)		1.7	+700	-185	
RNAV 1	CA				296 (301.4)			+700	-220	
RNAV 1	DF	BG050	32° 00' 55.9" N 034° 44' 05.9" E			L		@3 000		
RNAV 1	FM				270 (275.4)			@3 000		