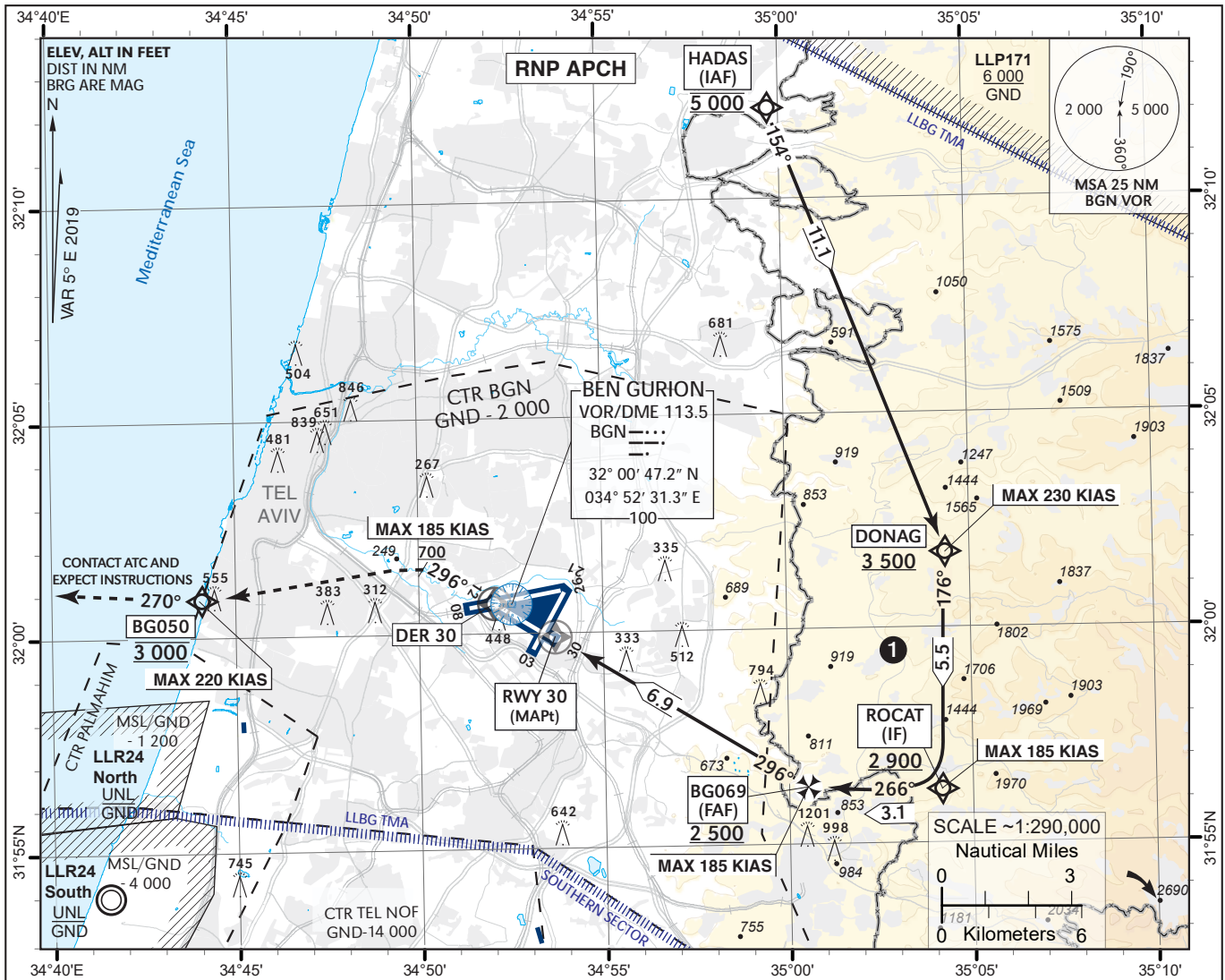


INSTRUMENT AERODROME ELEV **134 ft**
APPROACH HEIGHTS RELATED TO **TA 18 000**
CHART - ICAO THR RWY 30 - ELEV **130 ft**

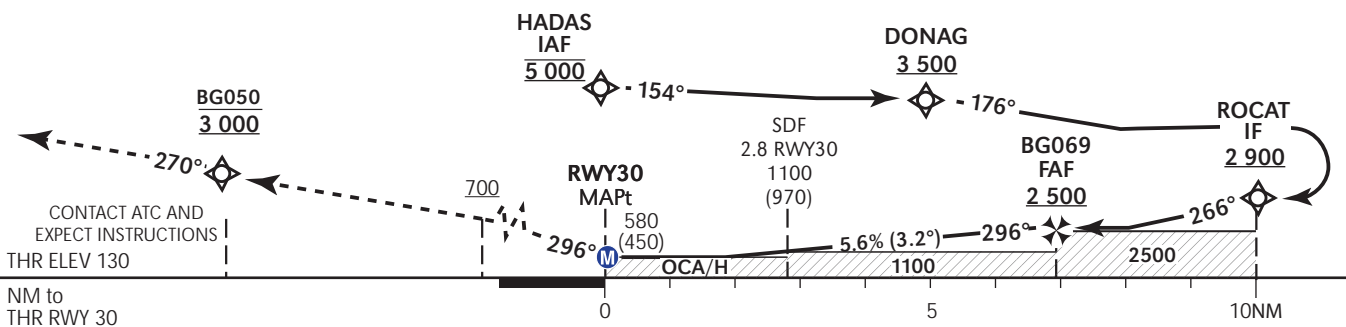
ATIS ARRIVAL 132.50
TMA 119.50
APP 120.50
TWR 134.60

TEL-AVIV / BEN-GURION (LLBG)
RNP Z RWY 30



MISSED APPROACH:

Initial climb 3 000. Climb on course 296°, at or above 700, turn LEFT (MAX 185 KIAS), Not before DER 30. Direct to BG050 at 3 000 (MAX 185 KIAS). Continue on track 270° at 3 000, contact ATC and expect instructions.
 BG050 at 3 000 requires a 5.6% minimum climb gradient due to airspace restrictions, if unable inform ATC.



COMMUNICATION FAILURE:

Initial climb 3 000. Climb on course 296°, at or above 700, turn LEFT (MAX 185 KIAS) Not before DER 30. Direct to BG050 at 3 000 (MAX 185 KIAS) turn RIGHT to GODED at 5 000, join the holding, perform one holding pattern and execute the same procedure again.

① VFR traffic may be present at low altitude max 1300 QNH between WPT ROCAT to WPT BG069.

OCA (OCH)	A	B	C	D
STA LNAV 2.5%	580(450)			
CIRCLING	N/A			
RWY30	6	5	4	3
ALT (HGT)	2230(2100)	1890(1760)	1550(1420)	1210(1080)
GS	kt	80	100	120
ROD: 5.6%	ft/min	453	567	680

Procedure: RNP Z RWY 30

Navigation Specification	Path Descriptor (Recommended)	Waypoint Identifier	Latitude Longitude	Flyover	Course/Track M° (T°)	Turn Direction	Distance (NM)	Altitude (ft)	Speed (Kts)	Remarks
RNAV 1	IF	HADAS	32° 12' 13.0"N 034° 59' 40.0" E	-		-	-	@5 000	-	IAF
RNAV 1	TF	DONAG	32° 01' 50.4"N 035° 04' 20.6" E	-	154 (159.0)	-	11.1	+3 500	-230	
RNAV 1	TF	ROCAT	31° 56' 19.8"N 035° 04' 11.1" E	-	176 (181.4)	R	5.5	+2 900	-185	IF
RNP APCH	TF	BG069	31° 56' 24.4"N 035° 00' 32.6" E	-	266 (271.4)	R	3.1	+2 500	-185	FAF
RNP APCH	TF	RWY30	31° 59' 59.88"N 034° 53' 39.12" E	Y	296 (301.4)	R	6.9	+180	-185	MAPt

Standard missed approach

Navigation Specification	Path Descriptor (Recommended)	Waypoint Identifier	Latitude Longitude	Flyover	Course/Track M° (T°)	Turn Direction	Distance (NM)	Altitude (ft)	Speed (Kts)	Remarks
RNP APCH	TF	DER30	32° 00' 51.14"N 034° 52' 00.56" E	Y	296 (301.4)		1.7	+700	-185	
RNAV 1	CA	-		-	296 (301.4)		-	+700	-185	
RNAV 1	DF	BG050	32° 00' 55.9" N 034° 44' 05.9" E	-		L	-	@3 000	-220	
RNAV 1	FM	BG050	32° 00' 55.9" N 034° 44' 05.9" E	-	270 (275.4)	R	-	@3 000		

Communication failure missed approach

Navigation Specification	Path Descriptor (Recommended)	Waypoint Identifier	Latitude Longitude	Flyover	Course/Track M° (T°)	Turn Direction	Distance (NM)	Altitude (ft)	Speed (Kts)	Remarks
RNP APCH	TF	DER30	32° 00' 51.14"N 034° 52' 00.56" E	Y	296 (301.4)		1.7	+700	-185	
RNAV 1	CA	-		-	296 (301.4)		-	+700	-185	
RNAV 1	DF	BG050	32° 00' 55.9" N 034° 44' 05.9" E	-		L	-	@3 000	-220	
RNAV 1	TF	GODED	32° 09' 54.0"N 034° 34' 22.0" E	-	312 (317.3)	R	12.2	@5 000		MAHF

Non Precision Final Approach – Slope (Descent angle)	5.6% (3.2°)
--	----------------

Holding Identification

Holding Fix	Latitude Longitude	Inbound Course/Track M° (T°)	MAX IAS (Kts)	Altitude (ft)	Outbound Time / Distance	Turn Direction
GODED	32° 09' 54" N 034° 34' 22" E	115.0 (120.3)		+5 000	1 Min	L