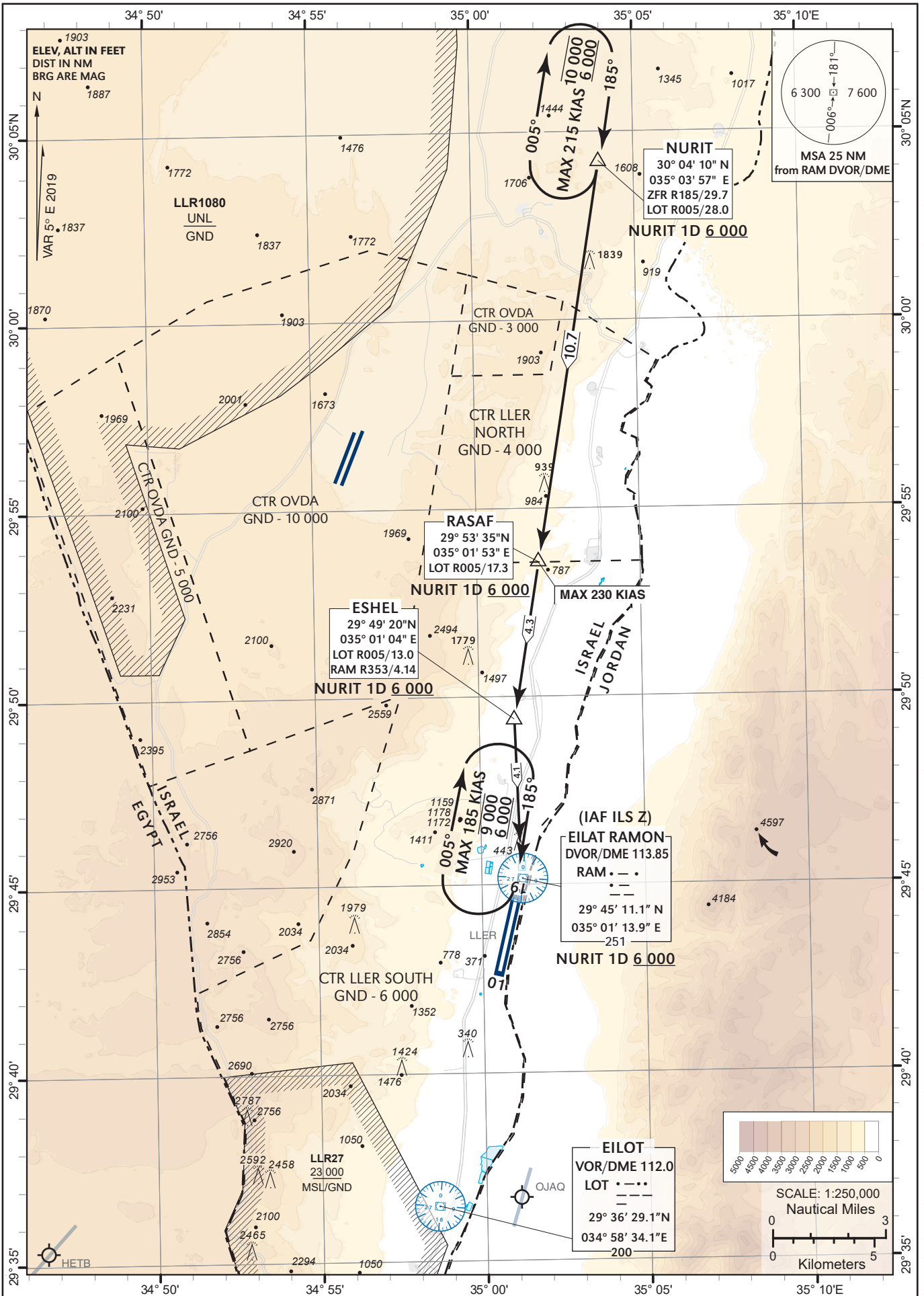


**STANDARD
INSTRUMENT
ARRIVAL (STAR)
CHART - ICAO**

AD ELEV **288 ft** TRANSITION ALTITUDE BY ATC
HEIGHTS RELATED TO
THR RWY 01 - ELEV **252 ft**

ATIS **132.55**
ACC **120.90**
TWR **119.00**

**EILAT/ILAN &
ASAF RAMON (LLER)
RWY01
NURIT 1D**



CHANGES: MAG VAR changed, MSA, RDL's updated, Name of WPT SAMAR change to ESHEL, NURIT 1C withdraw, NURIT 1D change to NURIT 1A. Minimum altitude at NURIT HOLDING change.