

STANDARD DEPARTURE CHART
INSTRUMENT (SID) - ICAO

TRANSITION ALTITUDE 10 000
AERODROME ELEV 134 ft

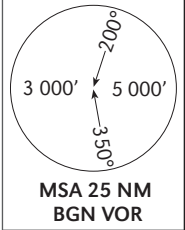
TWR 134.60
DEP 120.50
ACC 121.40

TEL-AVIV / BEN-GURION
RWY 03
GALGA 1

MERVA
32° 46' 54" N
034° 32' 38" E
BGN 336/49

RNAV 1 REQUIRED

ELEV, ALT IN FEET
DIST IN NM
BRG ARE MAG
VAR 4°E



GENERAL INSTRUCTIONS

SID GALGA 1 requires a MNM climb gradient of 300'/NM (5%) up to 3 000' due to airspace restriction.
If unable to comply advise ATC.

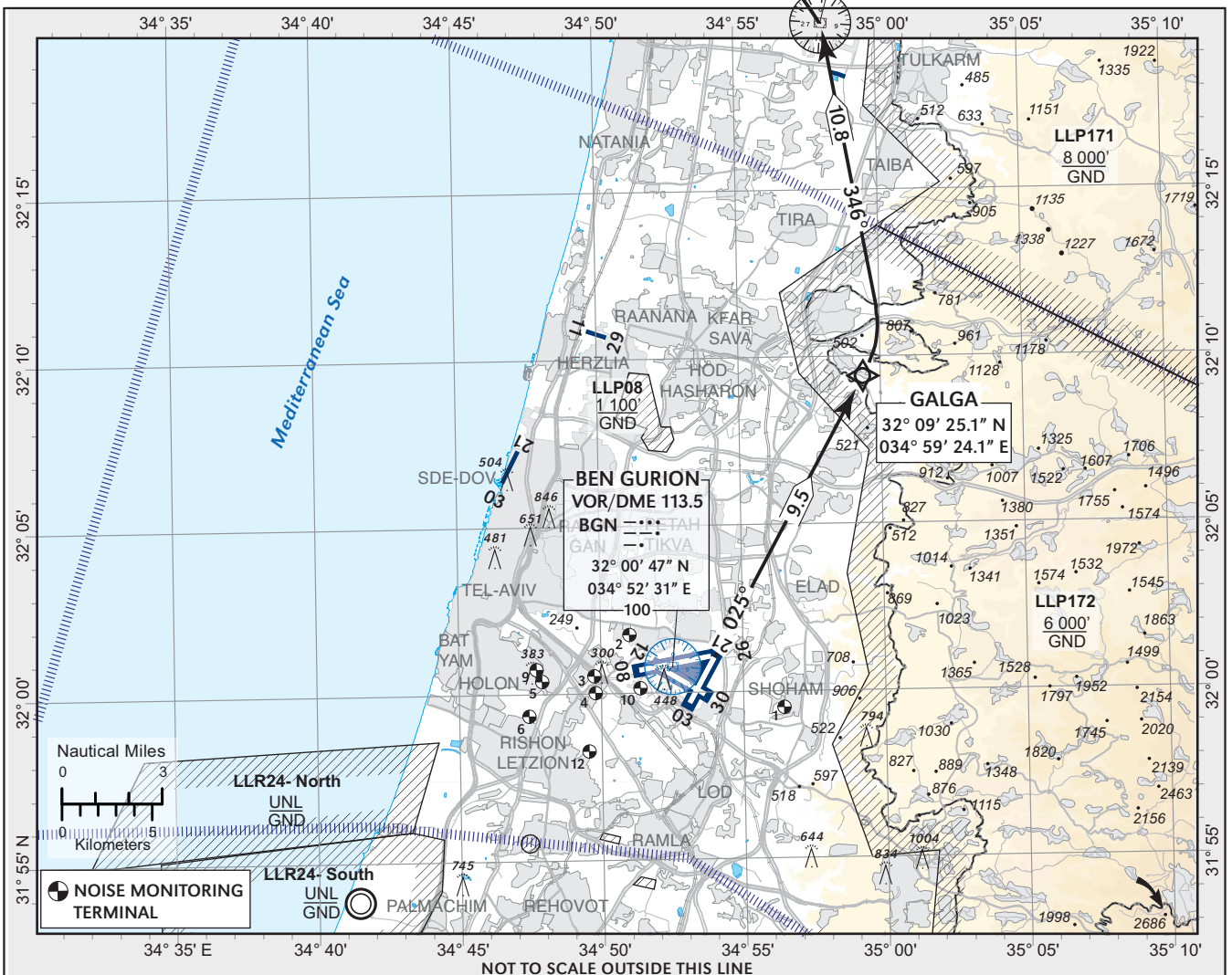
COMMUNICATION FAILURE

1. Select mode A code 7600.
2. Climb 6 000' NAT, 8 000' MERVA;
3. Climb to FPL altitude.

Ground speed	KT	90	120	150	180	210
MNM ROC	FPM	450	600	750	900	1050

Non RNAV ACFT: Initial climb 5 000'. Climb RWY heading, at BGN D10.0 turn left to 'NAT' VOR at or above 5 000'.

SID	RWY	TAKE - OFF	ROUTING/ALTITUDE
GALGA 1	03	Initial climb 5 000'. Climb straight ahead to GALGA, then turn LEFT to cross NAT at or above 5 000'.	After NAT turn LEFT to MERVA. cross NAT 15 DME outbound at or below 8 000'.



Procedure: LLBG RWY03 SID GALGA1 (1-15)

navigation performace	path terminator (Recommended)	WPT Name	Lat./Long	Fly Over/By	Distance	True/Mag. Track	Upper/Lower Limit	Speed Limit (Kts)	Remarks
RNAV1	CA	RWY03				025M	A534+		
RNAV1	DF	GALGA	32 09 25.1N 034 59 24.1E	FB	9.5				
RNAV1	DF	NAT	32 20 02N 034 58 08E	FB	10.8		A5000+		L
RNAV1	TF	15NAT	32 31 47.7N 034 47 03.5E	FB	15	317M	A8000-		L
RNAV1	TF	MERVA	32 46 54N 034 32 38E	FB	19	317M			