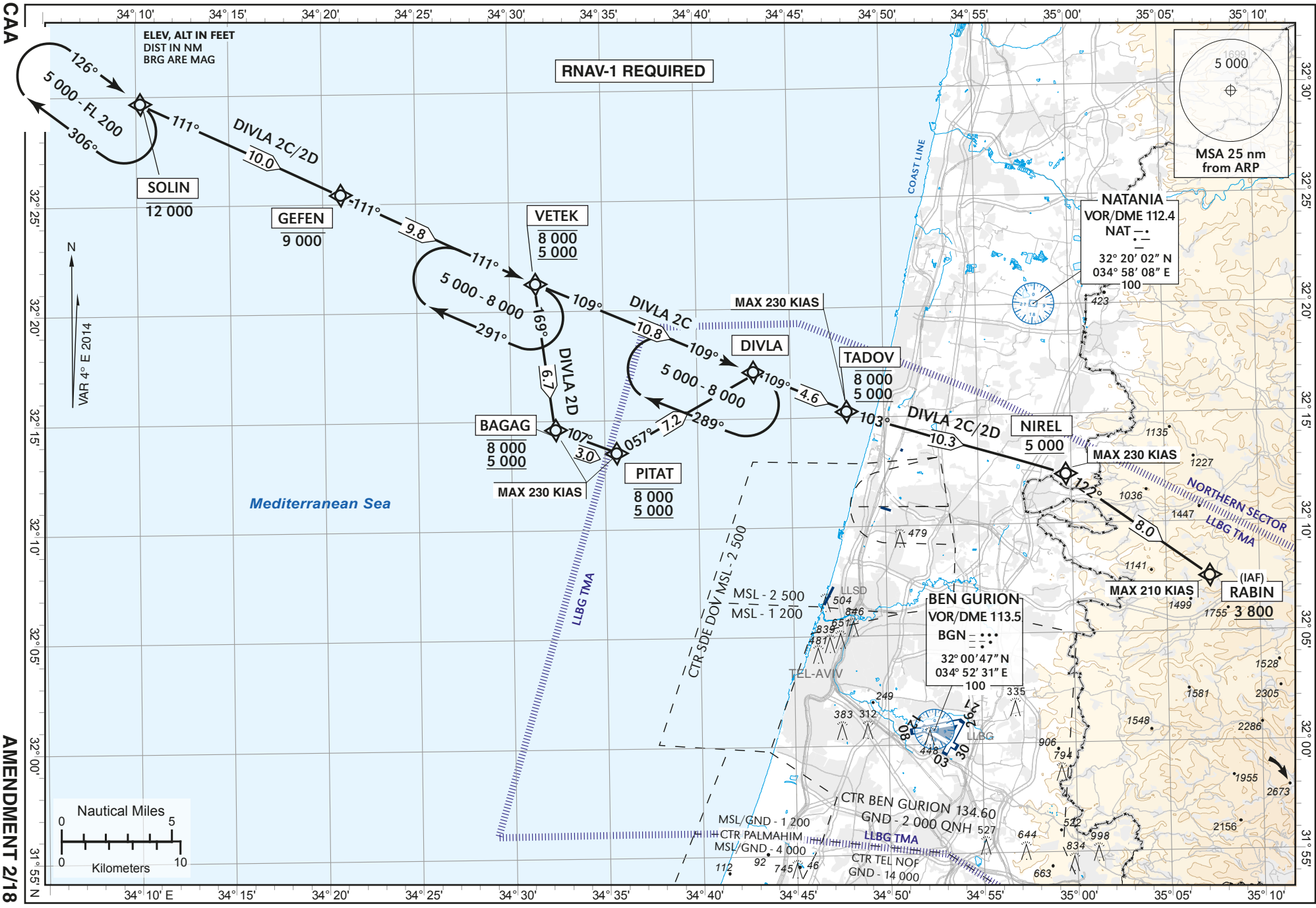


STANDARD ARRIVAL
CHART - INSTRUMENT
(RNAV STAR) - ICAO

TRANSITION ALT 18 000

ATIS Arrival - 132.50
ACC 121.40
APP 120.50
TWR 134.60

TEL-AVIV / BEN-GURION (LLBG)
RWY 26
DIVLA 2C, DIVLA 2D



CAA

AMENDMENT 2/18

RNAV-1 REQUIRED

MSA 25 nm from ARP

NATANIA
VOR/DME 112.4
NAT :::
32° 20' 02" N
034° 58' 08" E
100

BEN GURION
VOR/DME 113.5
BGN :::
32° 00' 47" N
034° 52' 31" E
100

RABIN
(IAF)
1755
3 800

ELEV, ALT IN FEET
DIST IN NM
BRG ARE MAG

VAR 4° E 2014

Nautical Miles
Kilometers

CHANGES: Min. ALT @ SOLIN & GEFEN, FB definition in coding table