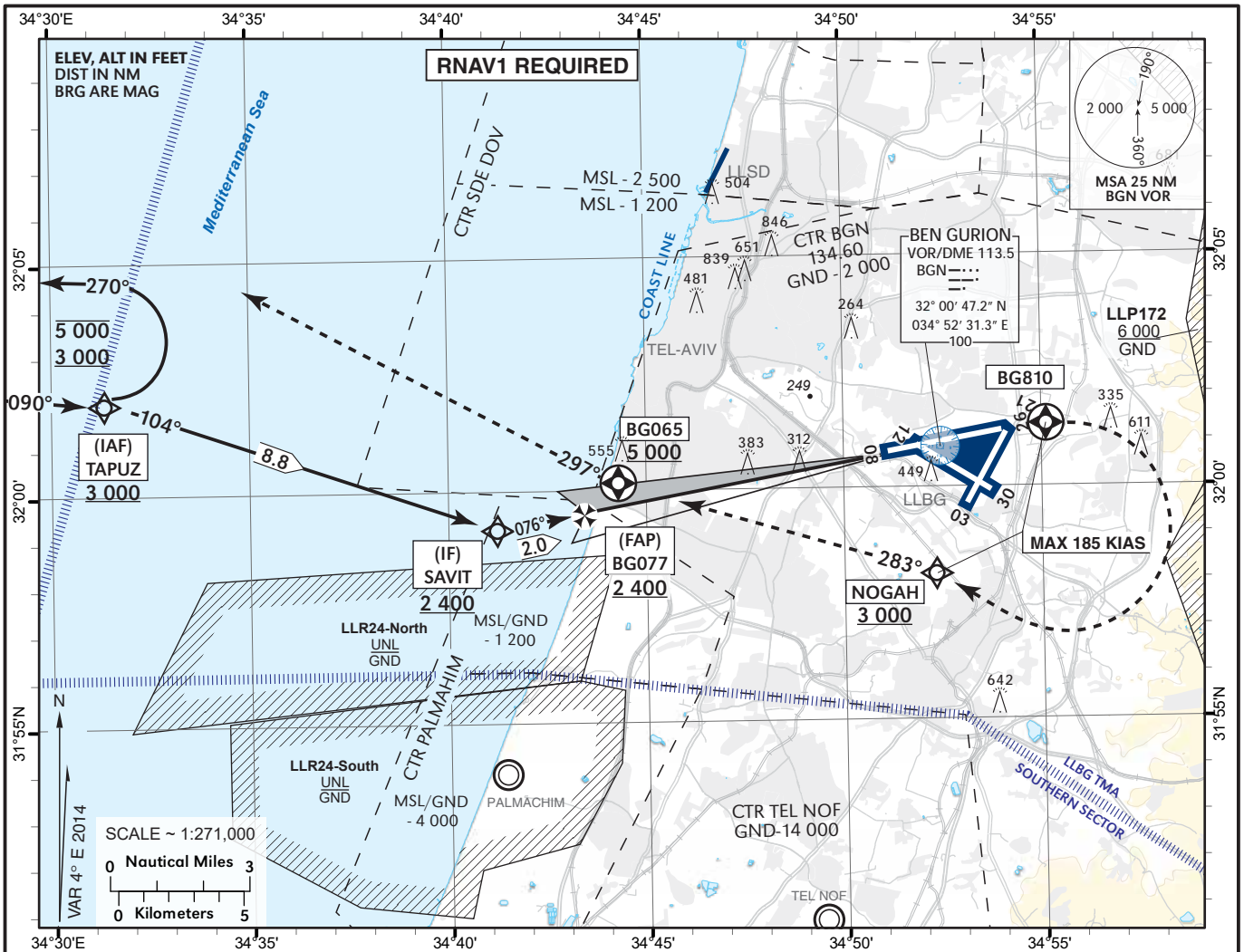


INSTRUMENT  
APPROACH  
CHART - ICAO

AD ELEV 134 ft  
HEIGHTS RELATED TO RWY 08 - ELEV 97 ft

ATIS Arrival	132.50
APP	120.50
TWR	134.60

TEL-AVIV / BEN-GURION (LLBG)  
ILS RWY 08



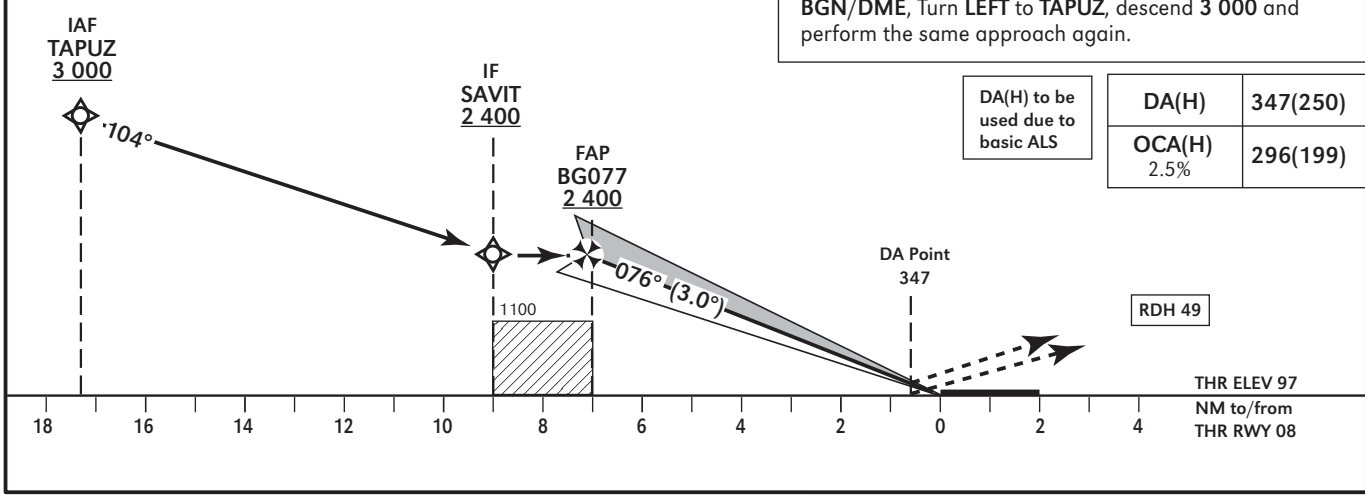
BC ILS DME	5.0	4.0	3.0	2.0
ALT (HAT)	1 760 (1 660)	1 440 (1 340)	1 110 (1 010)	790 (690)

**MISSED APPROACH:**  
Initial climb 5 000. Fly To BG810 on course 076°. Turn RIGHT to NOGAH at or above 3 000 (MAX 185 KIAS), then on course 283° to BG065 at or above 5 000. Continue on track 297° and expect ATC radar vectors.

**CAT A & B** requires a 5.1% climb gradient up to 5 000 due to airspace restrictions. If unable, advise ATC.  
**CAT C & D** requires a 4.5% climb gradient up to 5 000 due to airspace restrictions. If unable, advise ATC.

**COMMUNICATION FAILURE:**  
Execute above mentioned missed approach. Once established on track 297°, continue until 20.0D BGN/DME, Turn LEFT to TAPUZ, descend 3 000 and perform the same approach again.

TA 18 000



DA(H) to be used due to basic ALS	DA(H)	347(250)
	OCA(H) 2.5%	296(199)

RDH 49

THR ELEV 97  
NM to/from  
THR RWY 08

RWY 08 ILS CAT I

Navigation Specification	Path Descriptor (Recommended)	Waypoint Identifier	Latitude Longitude	Fly-Over	Course/Track M° (T°)	Distance (NM)	Turn Direction	Altitude (ft)	Speed (Kts)	Remarks
RNAV1	IF	TAPUZ	32° 01' 57" N 34° 31' 24" E					+3 000	-	IAF
RNAV1	TF	SAVIT	31° 59' 10" N 34° 41' 14" E		104 (108.3)	8.8		+2 400	-	IF
	TF	BG077	31° 59' 32" N 34° 43' 37" E		076 (079.8)	2.0	L	+2 400		FAP
	TF	RWY08	32° 00' 46" N 34° 51' 39" E	Y	076 (079.8)	7.0		+146		MAPt (LNAV)

RWY 08 Intermediate and Final Approach

FIX	Latitude Longitude	True Azimuth (reference)	DME distance
IF	31° 59' 10" N 34° 41' 14" E	080 (LOC 08)	9.00 DME BC* 9.73 DME BGN
FAP	31° 59' 32" N 34° 43' 37" E	080 (LOC 08)	7.00 DME BC* 7.73 DME BGN
			* 0 at THR

GP angle (Slope)	3.0° (5.24%)
------------------	--------------

STANDARD MISSED APPROACH

RNAV1	CF	BG810	32° 01' 18" N 34° 55' 07" E	Y	076 (079.8)				-185	
RNAV1	DF	NOGAH	31° 58' 08" N 34° 52' 19" E				R	+3 000	-185	
RNAV1	CF	BG065	32° 00' 10" N 34° 44' 19" E	Y	283 (286.6)			+5 000		
RNAV1	FM	BG065	32° 00' 10" N 34° 44' 19" E	Y	297 (301.0)					

HOLDING IDENTIFICATION

Holding Fix	Latitude Longitude	Inbound Course/Track M° (T°)	MAX IAS (Kts)	Altitude (ft)	Outbound Time / Distance	Turn Direction
TAPUZ	32° 01' 57" N 34° 31' 24" E	090.0 (094.3)	-	-5 000 +3 000	1 Min	L