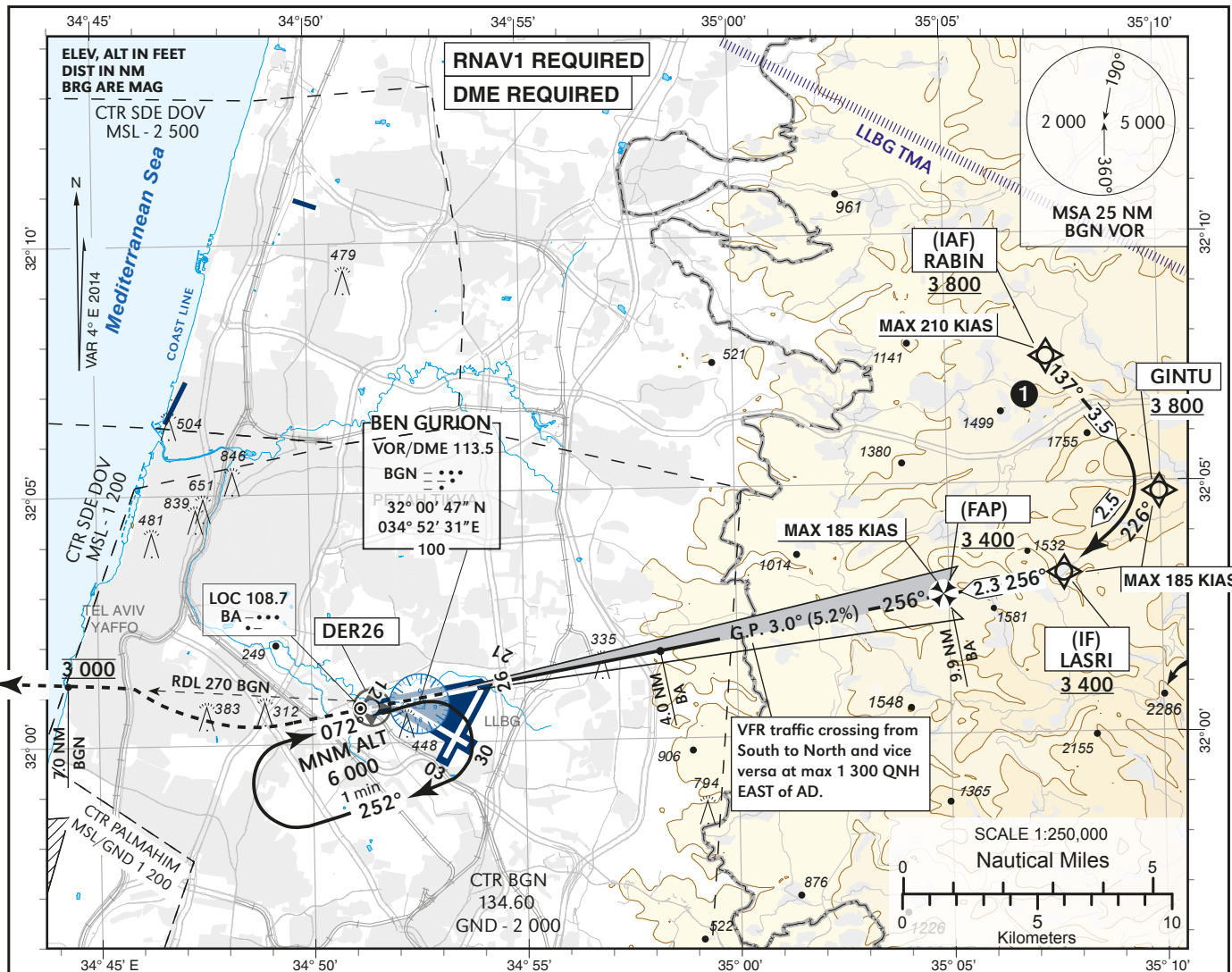


INSTRUMENT APPROACH
CHART - ICAO

AD ELEV 134 ft
HEIGHTS RELATED TO THR RWY 26 - ELEV 124 ft

ATIS Arrival - 132.50
APP 120.50
TWR 134.60

TEL- AVIV / BEN-GURION (LLBG)
ILS X RWY 26

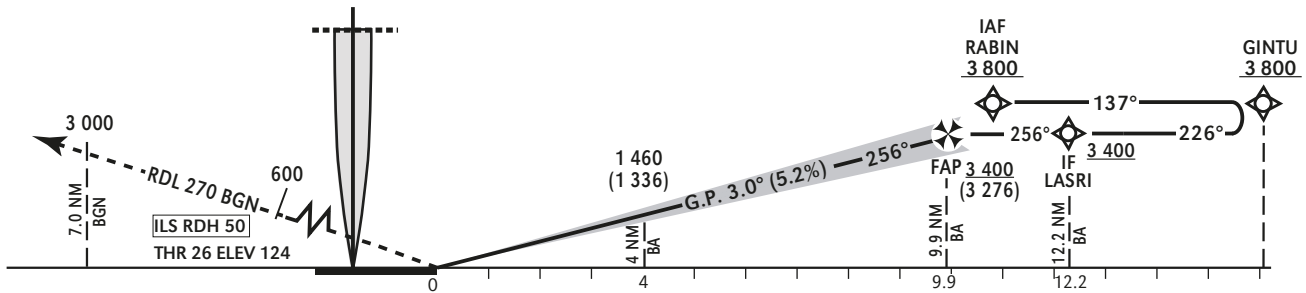


BA ILS DME	1.0	2.0	3.0	4.0	5.0	6.0	7.0	8.0	9.0
ALT (HAT)	500 (376)	820 (696)	1 140 (1 016)	1 460 (1 336)	1 790 (1 666)	2 120 (1 996)	2 450 (2 326)	2 780 (2 656)	3 110 (2 986)

TRANSITION ALT 18 000

MISSED APPROACH: Initial climb 3 000 ft, climb straight ahead. At 600 ft turn RIGHT (no turn before DER RWY26) to intercept RDL 270 BGN outbound, cross 7.0 DME BGN at 3 000 ft. Contact ATC and expect instructions. Missed approach requires a 6.4% climb gradient due to airspace restrictions. If unable, advise ATC.

COMMUNICATION FAILURE: After crossing 7.0 DME BGN - Climb 5 000 ft. At BGN 12 DME fly direct "DIVLA" and perform the same procedure again.



NM from THR RWY 26
BA ILS DME reads zero at RWY 26 THR

CAT	A	B	C	D			
OCA(H)	270 (146)	282 (158)	290 (166)	300 (176)			
GS	KT	90	110	130	150	170	190
ROD: 5.2%	FPM	478	584	690	796	902	1008

- ① RNAV1 Required for initial segment. If unable RNAV1 expect radar vectors to ILS.
- ② GP INOP + CIRCLING - not Authorized.

CHANGES: CTR added, coding table, MSA box, ATIS added, ALT@FAP

LLBG RWY26 ILS CAT I Initial Approach

navigation performance	path terminator (Recommended)	WPT Name	Lat./Long	Fly Over/ By	Distance	True/Mag. Track	Upper/ Lower Limit (ALT)	Speed Limit (Kts)	Remarks
RNAV1	IF	RABIN	32° 07' 32.2" N 035° 07' 20.9" E	FB			+3800	-210	IAF
RNAV1	TF	GINTU	32° 04' 48.4" N 035° 09' 58.2" E	FB	3.5	140.7/137	+3800	-185	
RNAV1	TF	LASRI	32° 03' 12.4" N 035° 07' 41.7" E	FB	2.5	230.5/226	+3400	-185	IF

RWY26 ILS Intermediate and Final Approach

Fix	Fix Coordinates	Fix formation Bearing	Fix formation distance	Decent Angle
IF	32° 03' 12.4" N 035° 07' 41.7" E	079.8 true (076)	BA 12.2 *	3.0°
FAP	32° 02' 47.9" N 035° 04' 59.1" E	079.8 true (076)	BA 9.9 *	
RWY26	32° 01' 03.8" N 034° 53' 33.9" E			
DER26	32° 00' 44.0" N 034° 51' 24.0" E			
BGN VOR/DME	32° 00' 47.2" N 034° 52' 31.3" E			

* 0 at THR

HOLDING IDENTIFICATION LLBG ILS RWY26

HOLDING FIX	LATITUDE (N) LONGITUDE (E)	INBOUND TRUE TRACK (degrees)	INBOUND MAGNETIC TRACK (degrees)	MAXIMUM INDICATED AIRSPEED (kts)	MAXIMUM / MINIMUM HOLDING ALTITUDE / LEVEL (FL/ft)	TIME / DISTANCE OUTBOUND	DIRECTION OF TURN
BGN VOR/DME	32° 00' 47" N 034° 52' 31" E		072	250	At or above ALT 6 000	1 min	R