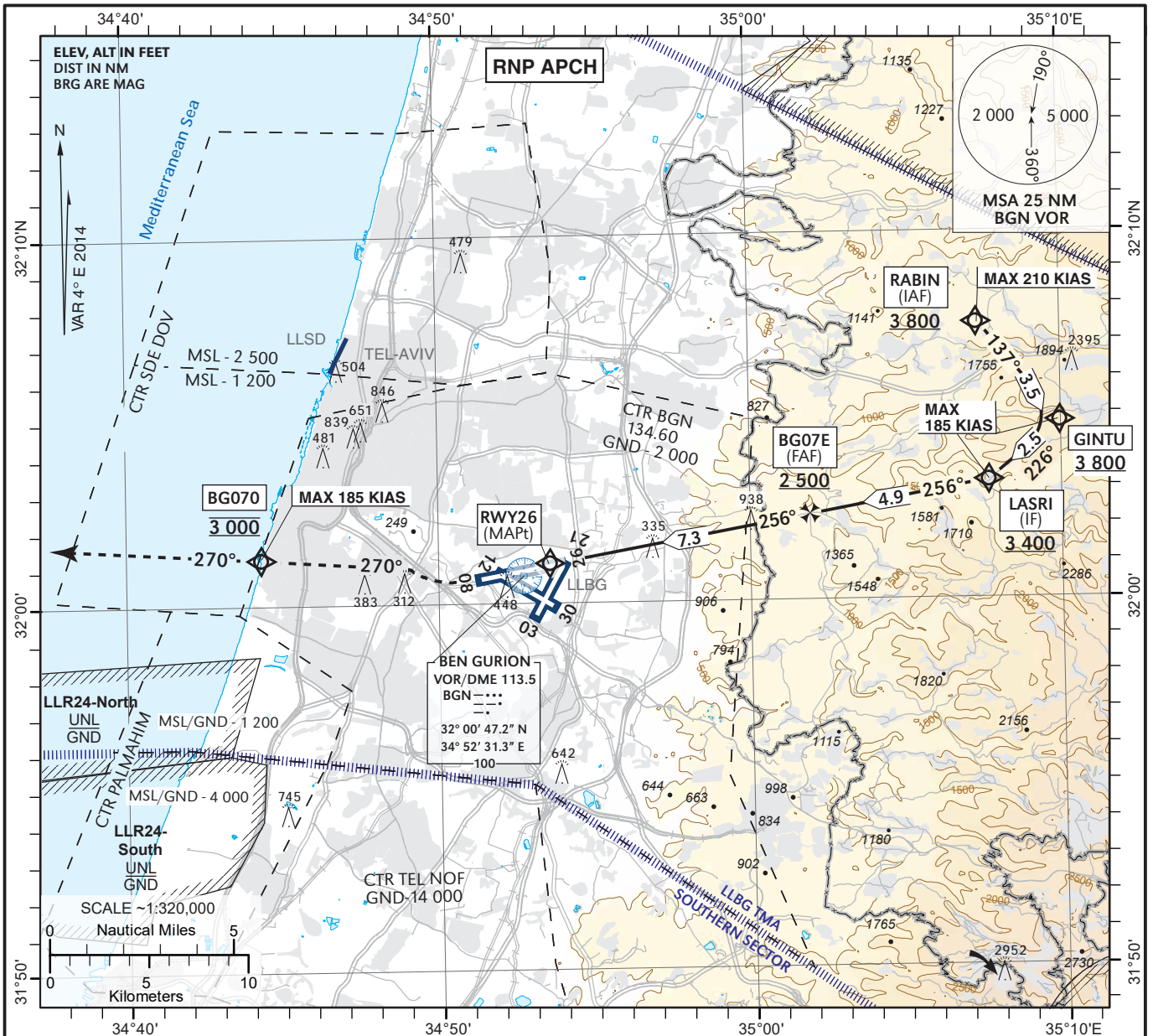


**INSTRUMENT
APPROACH
CHART - ICAO**

**AERODROME ELEV 134 ft
HEIGHTS RELATED TO
THR RWY 26 - ELEV 124 ft**

**ATIS Arrival 132.50
APP 120.50
TWR 134.60**

**TEL-AVIV / BEN-GURION (LLBG)
RNP RWY 26**

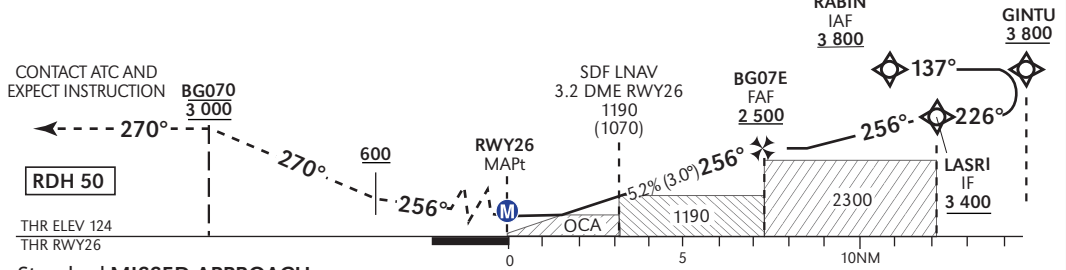


TRANSITION ALT 18 000

RWY26	2	3	4	5	6	7
ALT (HGT)	820 (690)	1 130 (1 010)	1 450 (1 330)	1 770 (1 650)	2 090 (1 970)	2 410 (2 290)

MISSED APPROACH:
Initial climb 3 000. Climb on course 256°, at or above 600, turn RIGHT on course 270° (MAX 185 KIAS) to BG070 at 3 000 (MAX 185 KIAS). Continue on track 270° (MAX 250 KIAS), contact ATC and expect instructions.

COMMUNICATION FAILURE:
Execute above mentioned missed approach. Once established on track 270°, fly to ORLEV 5 000 (at), turn RIGHT Direct to DIVLA at 5 000 and perform the same procedure again.



Standard MISSED APPROACH requires a 6.0% climb gradient up to 3 000 due to airspace restrictions. if unable, advise ATC.
COMMUNICATION FAILURE MISSED APPROACH requires a 6.4% climb gradient up to 5 000 due to airspace restrictions.

BARO-VNAV temperature
MNM -10°c / MAX 60°c
Effective VPA at 0°c is 2.8°
Effective VPA at 45°c is 3.3°

OCA (OCH)	A	B	C	D	
LNAV	2.5%	590 (470)			
LNAV/VNAV	2.5%	390 (270)	400 (280)	420 (300)	450 (330)
CIRCLING	N/A				

GS	KT	80	100	120	140	160	180
ROD: 5.2%	ft/min	425	531	637	743	850	956

CHANGES: Profile - ALT@BG070; VERSO

RNP RWY 26

Navigation Specification	Path Descriptor (Recommended)	Waypoint Identifier	Latitude Longitude	Fly-Over	Course/Track M° (T°)	Distance (NM)	Turn Direction	Altitude (ft)	Speed (Kts)	Remarks
RNP APCH	IF	RABIN	32° 07' 32" N 35° 07' 21" E	-				+3 800	-210	IAF
RNP APCH	TF	GINTU	32° 04' 48" N 35° 09' 58" E	-	137 (140.7)	3.5		+3 800	-185	
RNP APCH	TF	LASRI	32° 03' 12" N 35° 07' 42" E	-	226 (230.5)	2.5	R	+3 400	-185	IF
RNP APCH	TF	BG07E	32° 02' 21" N 35° 02' 01" E	-	256 (260.0)	4.9	R	+2 500		FAF
RNP APCH	TF	RWY26	32° 01' 04" N 34° 53' 34" E	Y	256 (260.0)	7.3		+174		MAPt

RNP RWY 26 - Missed Approach

Navigation Specification	Path Descriptor (Recommended)	Waypoint Identifier	Latitude Longitude	Fly-Over	Course/Track M° (T°)	Distance (NM)	Turn Direction	Altitude (ft)	Speed (Kts)	Remarks
RNP APCH	CA			-	256 (260.0)			+600	-185	
RNP APCH	CF	BG070	32° 01' 16" N 34° 44' 20" E	-	270 (274.0)		R	@3 000	-185	
RNP APCH	FM			-	270 (274.0)			+3 000	-250	