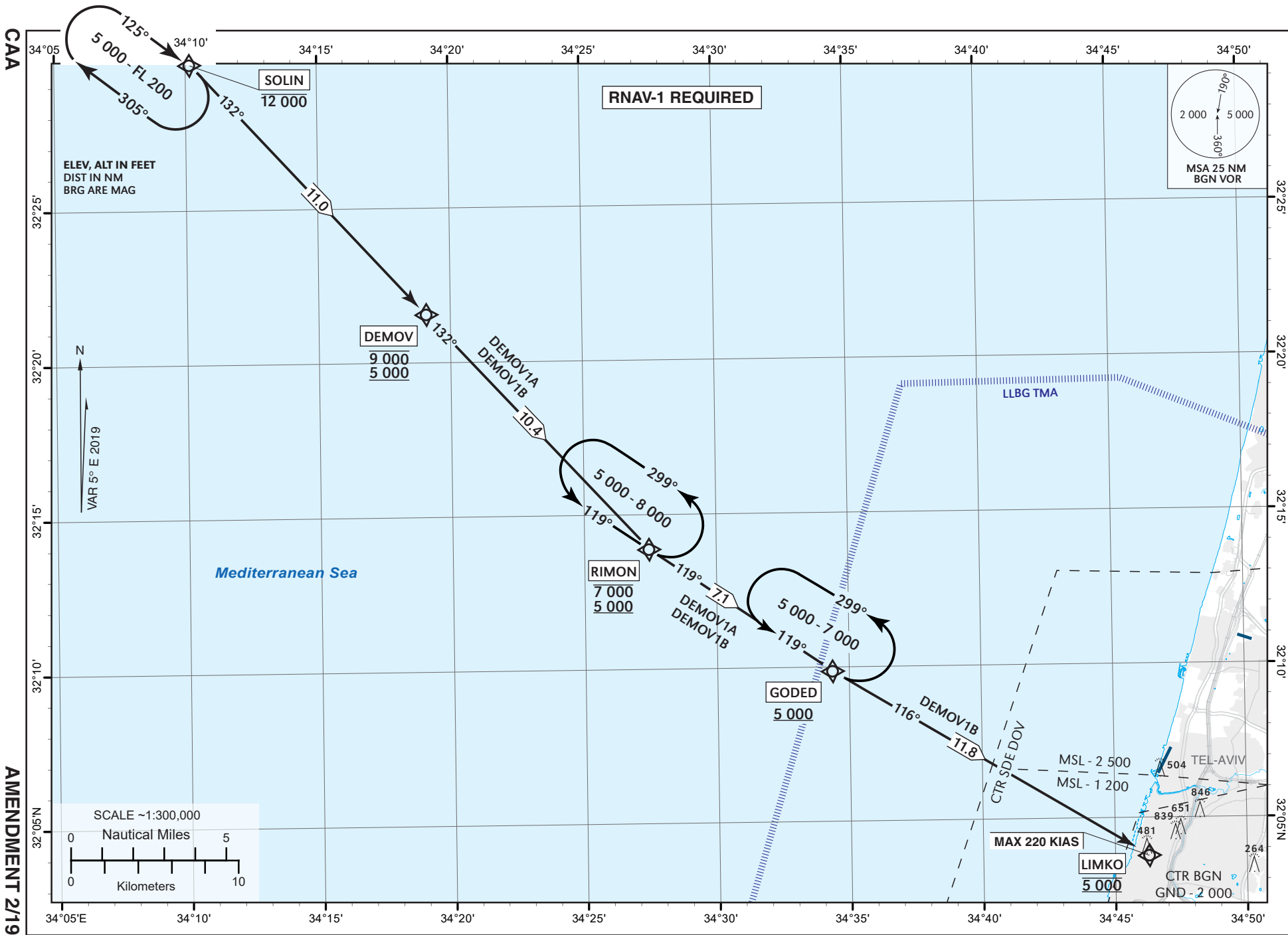


STANDARD ARRIVAL
CHART - INSTRUMENT
(RNAV STAR) - ICAO

TRANSITION ALT 18 000

ATIS Arrival	ACC	APP	TWR
132.50	121.40	120.50	134.60

TEL-AVIV / BEN-GURION (LLBG)
RWYS 12, 30
DEMOV1A, DEMOV1B



CHANGES: Chart ID+Number, MAG VAR, ALT@GODED HLG, Coding table added

DEMOV1A STAR RWY 12

Navigation Specification	Path Descriptor (Recommended)	Waypoint Identifier	Latitude Longitude	Fly-Over	Course/Track M° (T°)	Distance (NM)	Turn Direction	Altitude (ft)	Speed (Kts)	Remarks
RNAV1	IF	SOLIN	32° 29' 41"N 034° 10' 15" E	-				-12 000		
RNAV1	TF	DEMOV	32° 21' 36"N 034° 19' 05" E	-	132 (137.2)	11		-9 000 +5 000		
RNAV1	TF	RIMON	32° 13' 55"N 034° 27' 27" E	-	132 (137.2)	10.4		-7 000 +5 000		
RNAV1	TF	GODED	32° 09' 54"N 034° 34' 22" E	-	119 (124.3)	7.1		+5 000		IAF

DEMOV1B STAR RWY 30

Navigation Specification	Path Descriptor (Recommended)	Waypoint Identifier	Latitude Longitude	Fly-Over	Course/Track M° (T°)	Distance (NM)	Turn Direction	Altitude (ft)	Speed (Kts)	Remarks
RNAV1	IF	SOLIN	32° 29' 41"N 034° 10' 15" E	-				-12 000		
RNAV1	TF	DEMOV	32° 21' 36"N 034° 19' 05" E	-	132 (137.2)	11		-9 000 +5 000		
RNAV1	TF	RIMON	32° 13' 55"N 034° 27' 27" E	-	132 (137.2)	10.4		-7 000 +5 000		
RNAV1	TF	GODED	32° 09' 54"N 034° 34' 22" E	-	119 (124.3)	7.1		+5 000		
RNAV1	TF	LIMKO	32° 03' 48"N 034° 46' 18" E	-	116 (121.0)	11.8		@5 000		IAF

Holding Identification

Holding Fix	Latitude Longitude	Inbound Course/Track M° (T°)	MAX IAS (Kts)	Altitude (ft)	Outbound Time / Distance	Turn Direction
SOLIN	32° 29' 41"N 034° 10' 15" E	125 (129.7)		-FL 200 +5 000	1 Min	R
RIMON	32° 13' 55"N 034° 27' 27" E	119 (124.3)	250	-8 000 +5 000	1 Min	L
GODED	32° 09' 54"N 034° 34' 22" E	119 (124.3)	250	-7 000 +5 000	1 Min	L