

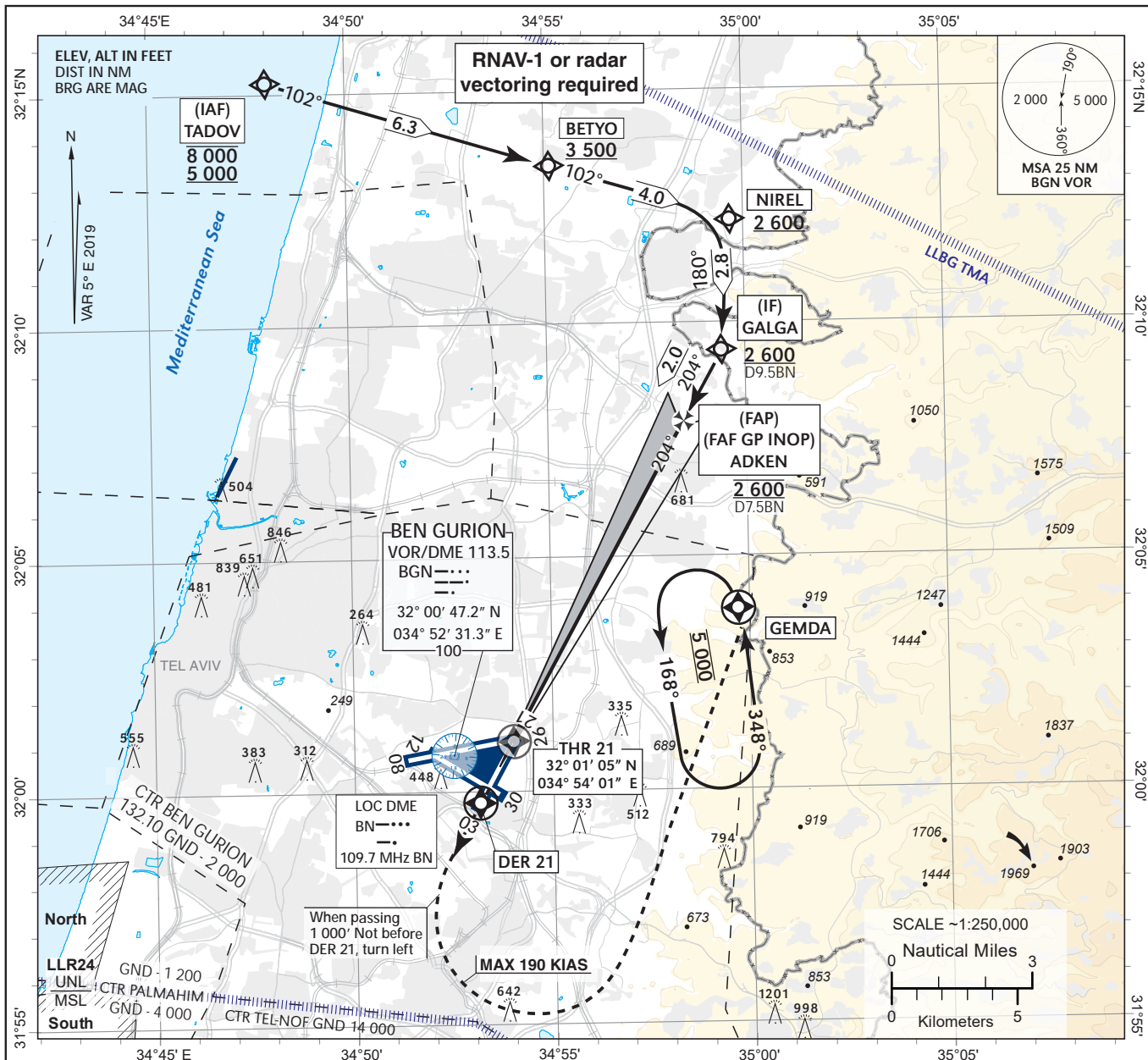
**INSTRUMENT
APPROACH
CHART - ICAO**

TRANSITION ALT 18 000

AERODROME ELEV 134 ft
HEIGHTS RELATED TO
THR ELEV 134 ft

ARR 131.10
TWR 132.10

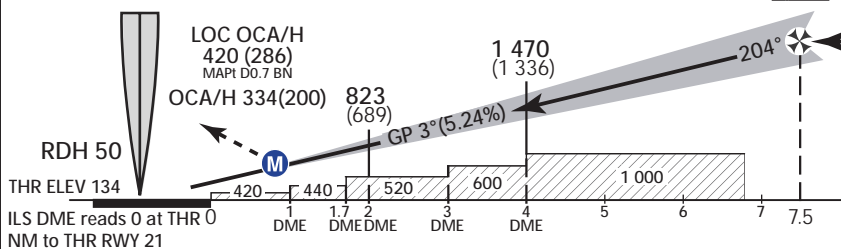
TEL-AVIV / BEN-GURION (LLBG)
ILS RWY 21



MISSED APPROACH:

Initial climb to 5 000. Climb straight ahead, at DER 21 or 1 000, whichever is later, turn LEFT to GEMDA 5 000 and hold. Note climb gradient requirement of 4.5% (270/NM) Due to airspace restrictions. If unable to comply utilize 2.5% OCA/H and advise ATC.

BG ILS DME	6 DME	4 DME	2 DME
ALT (HAT)	2 125 (1 991)	1 470 (1 336)	823 (689)



OCA/(H)	MISSED APCH climb gradient	MISSED APCH				CLIMB GRADIENT								
		A	B	C	D	GS	KT	90	100	120	140	160	180	
Straight in approach	4.5% up to 4,000		334 (200)											
	2.5%		534 (400)											
GP INOP	4.5% up to 4,000		420 (286)											
	2.5%		540 (406)											
Circling		N/A												

RWY 21 ILS CAT I

Navigation Specification	Path Descriptor (Recommended)	Waypoint Identifier	Latitude Longitude	Fly-Over	Course/Track M° (T°)	Distance (NM)	Turn Direction	Altitude (ft)	Speed (Kts)	Remarks
RNAV1	IF	TADOV	32° 15' 15" N 034° 48' 00" E					-8 000 +5 000	-230	IAF
RNAV1	TF	BETYO	32° 13' 24" N 034° 55' 08" E		102 (106.9)	6.3	R	+3 500		
RNAV1	TF	NIREL	32° 12' 13" N 034° 59' 40" E		102 (106.9)	4.0		+2 600		
RNAV1	CF	GALGA	32° 09' 25.1" N 034° 59' 24.1" E		180 (184.6)	2.8	R	+2 600		IF
RNAV1	CF	ADKEN	32° 07' 39.4" N 034° 58' 15.6" E		204 (208.9)	2.0		@2 600		FAP
RNAV1	CF	THR21	32° 01' 05.2" N 034° 54' 00.8" E	Y	204 (208.9)	7.5		+183		MAPt

Standard missed approach

Navigation Specification	Path Descriptor (Recommended)	Waypoint Identifier	Latitude Longitude	Fly-Over	Course/Track M° (T°)	Distance (NM)	Turn Direction	Altitude (ft)	Speed (Kts)	Remarks
RNAV1	TF	DER21	31° 59' 46.4" N 034° 53' 09.9" E	Y	204 (208.9)			+1 000	-190	
RNAV1	CA				204 (208.9)			+1 000	-190	
RNAV1	DF	GEMDA	32° 03' 26" N 034° 59' 48" E	Y		14.3	L	@5 000	-190	
RNAV1	FM	GEMDA	32° 03' 26" N 034° 59' 48" E		348 (353)		L	@5 000		

RWY 21 Intermediate and Final Approach

FIX	Latitude Longitude	True Azimuth (reference)	DME distance
IF	31° 09' 25.1"N 034° 59' 24.1" E	208.98 (LOC 21)	9.50 DME BN* 10.4 DME BGN
FAP	32° 07' 39.4"N 034° 58' 15.6" E	208.98 (LOC 21)	7.50 DME BN* 8.41 DME BGN
THR21	32° 01' 05.2"N 034° 54' 00.8" E	208.98 (LOC 21)	
			* 0 at THR

RWY 21 LOC Only Intermediate and Final Approach

FIX	Latitude Longitude	Fix Formation Bearing	Fix Formation Distance
IF	31° 09' 25.1"N 034° 59' 24.1" E	208.98 (LOC 21)	9.5 BN
FAF	32° 07' 39.4"N 034° 58' 15.6" E	208.98 (LOC 21)	7.5 BN
MAPt	32° 01' 42.1"N 034° 54' 24.6" E	208.98 (LOC 21)	0.7 BN

Non Precision Final Approach – Slope (Descent angle)	5.24% (3.0°)
GP angle (Slope)	3.0° (5.24%)

Holding Identification

Holding Fix	Latitude Longitude	Inbound Course/Track M° (T°)	MAX IAS (Kts)	Altitude (ft)	Outbound Time / Distance	Turn Direction
GEMDA	32° 03' 26" N 034° 59' 48" E	348 (353)	250	@5 000	1 Min	L