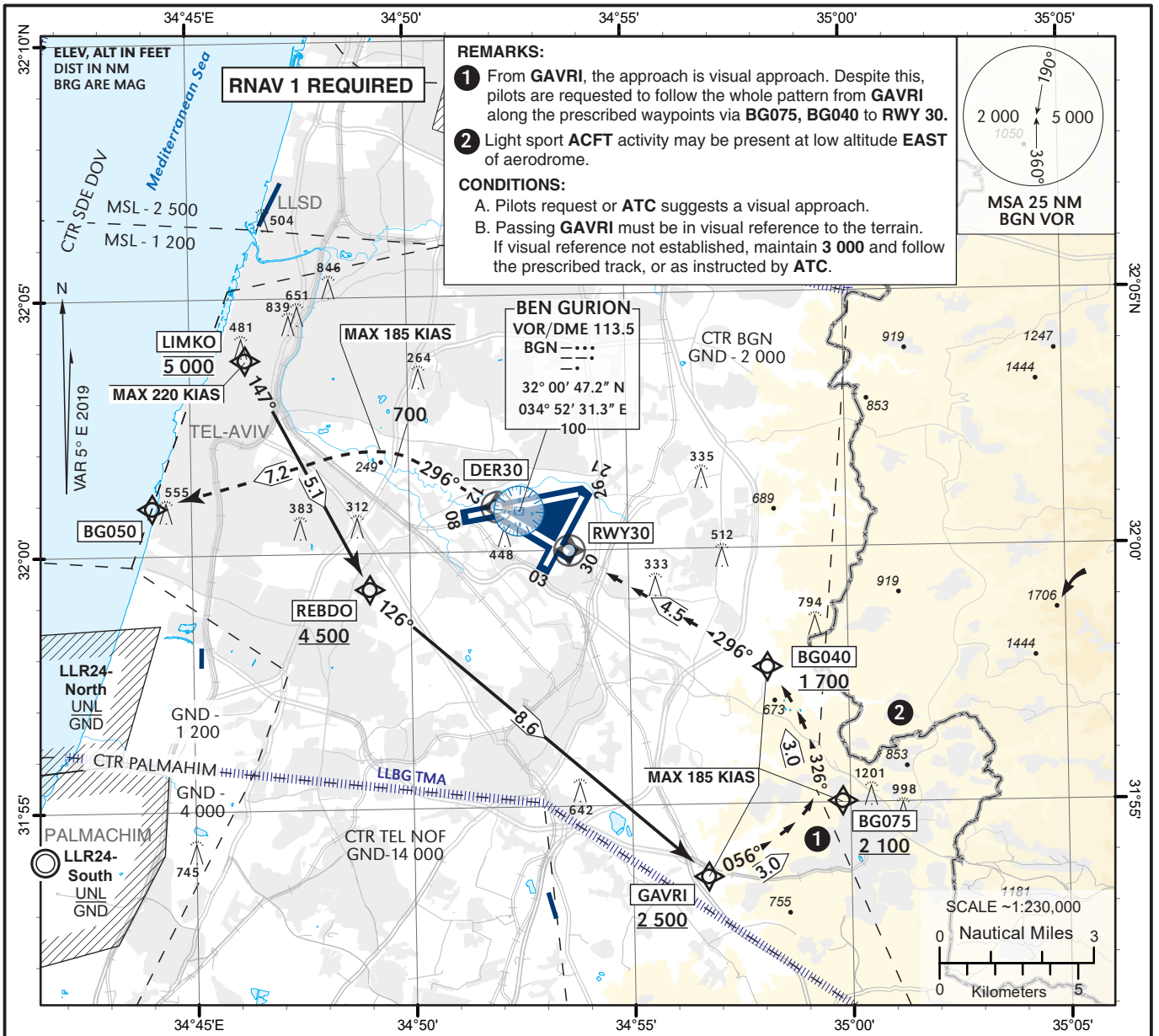


**VISUAL
APPROACH CHART**
(with prescribed RNAV track)

AERODROME ELEV **134 ft**
HEIGHTS RELATED TO
THR RWY 30 - ELEV **130 ft**

ATIS Arrival	132.50
APP	120.50
TWR	134.60

**TEL-AVIV / BEN-GURION
(LLBG)**
GAVRI APPROACH RWY 30

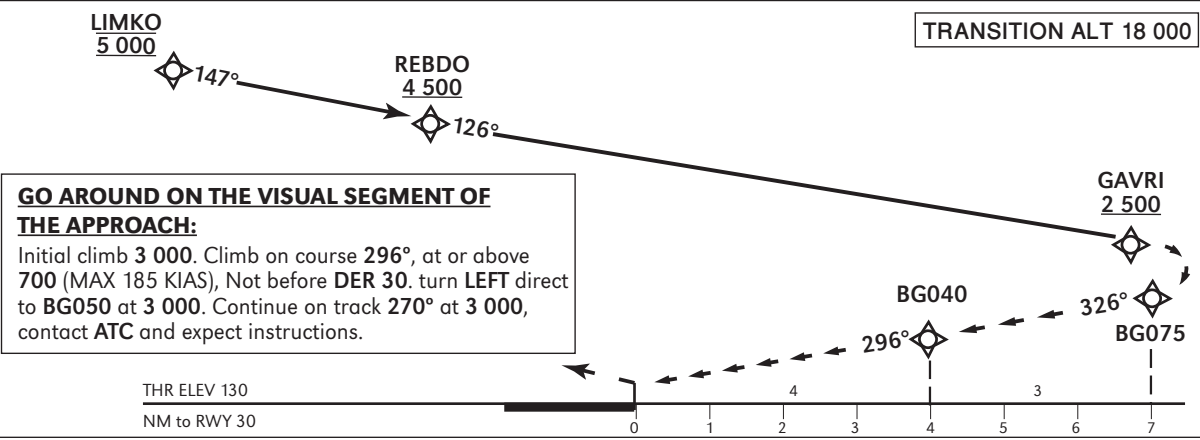
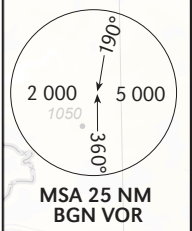


REMARKS:

- From **GAVRI**, the approach is visual approach. Despite this, pilots are requested to follow the whole pattern from **GAVRI** along the prescribed waypoints via **BG075, BG040** to **RWY 30**.
- Light sport **ACFT** activity may be present at low altitude **EAST** of aerodrome.

CONDITIONS:

A. Pilots request or **ATC** suggests a visual approach.
 B. Passing **GAVRI** must be in visual reference to the terrain.
 If visual reference not established, maintain **3 000** and follow the prescribed track, or as instructed by **ATC**.



LLBG - GAVRI VISUAL RNAV RWY 30

Navigation Specification	Path Descriptor (Recommended)	Waypoint Identifier	Latitude Longitude	Fly-Over	Course/Track M° (T°)	Distance (NM)	Turn Direction	Altitude (ft)	Speed (Kts)	Remarks
RNAV1	IF	LIMKO	32° 03' 48.0" N 034° 46' 18.0" E					@5 000	-220	
RNAV1	TF	REBDO	31° 59' 17.0" N 034° 49' 04.0" E		147 (152.4)	5.1		+4 500		
RNAV1	TF	GAVRI	31° 53' 35.1" N 034° 56' 43.6" E		126 (131.1)	8.6	L	+2 500	-185	
RNAV1	TF	BG075	31° 55' 01.3" N 034° 59' 49.3" E		056 (061.4)	3.0	L	+2 100	-185	
RNAV1	TF	BG040	31° 57' 39.8" N 034° 58' 08.2" E		326 (331.4)	3.0	L	+1 700	-185	
RNAV1	TF	RWY30	31° 59' 59.9" N 034° 53' 39.1" E	Y	296 (301.4)	4.5	L	+180	-185	

Go Around

Navigation Specification	Path Descriptor (Recommended)	Waypoint Identifier	Latitude Longitude	Fly-Over	Course/Track M° (T°)	Distance (NM)	Turn Direction	Altitude (ft)	Speed (Kts)	Remarks
RNAV1	TF	DER30	32° 00' 51.1" N 034° 52' 00.6" E	Y	296 (301.4)	1.7		+700	-185	
RNAV1	CA		30° 04' 10.0" N 035° 03' 57.0" E		296 (301.4)			+700	-185	
RNAV1	DF	BG050	32° 00' 55.9" N 034° 44' 05.9" E				L	@3 000		
RNAV1	FM	BG050	32° 00' 55.9" N 034° 44' 05.9" E		270 (275.4)		R	@3 000		

Holding Identification

Holding Fix	Latitude Longitude	Inbound Course/Track M° (T°)	MAX IAS (Kts)	Altitude (ft)	Outbound Time / Distance	Turn Direction
GODED	32° 09' 54" N 034° 34' 22" E	115 (120.3)	250	+5 000	1 Min	L