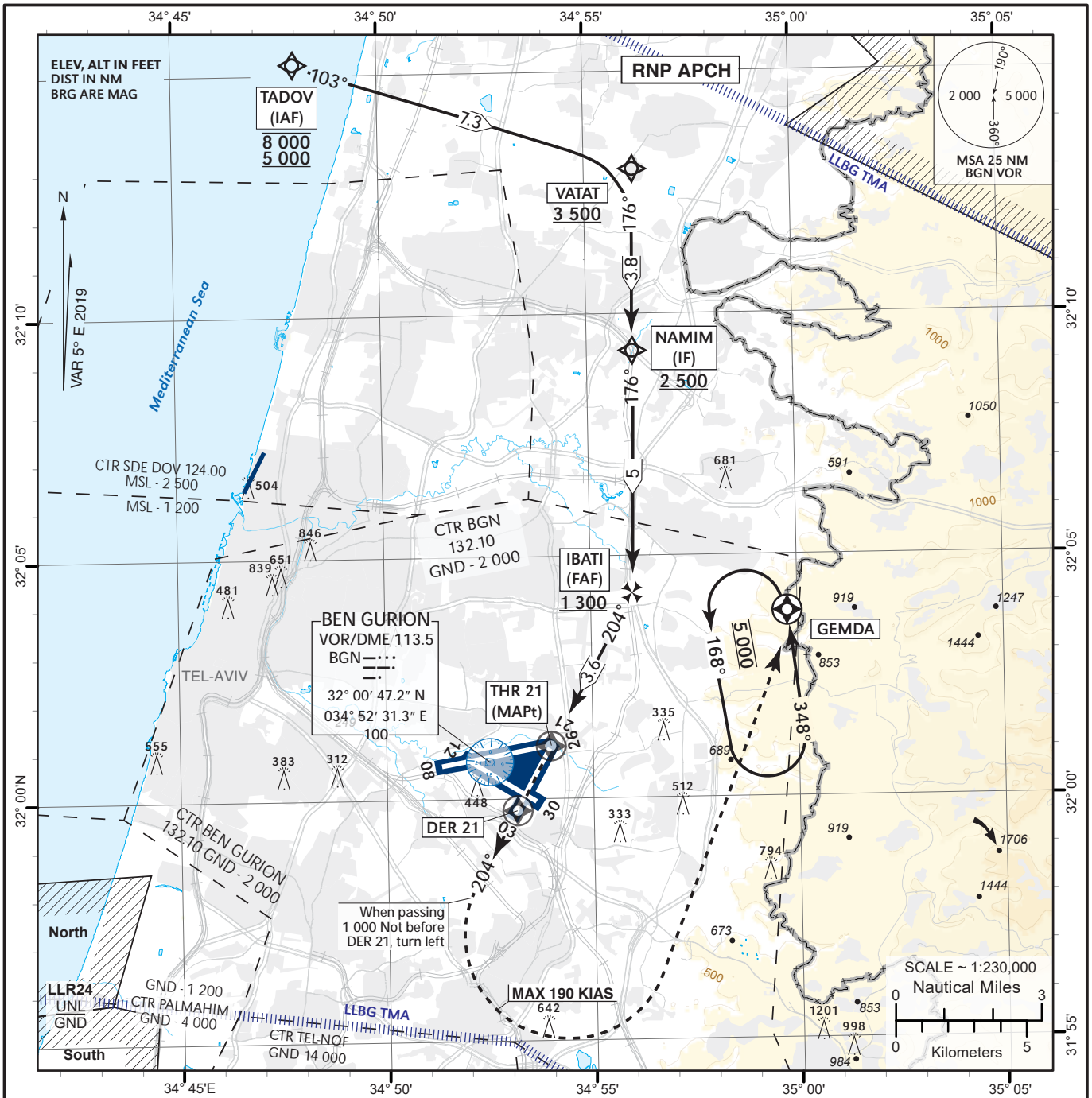


INSTRUMENT  
APPROACH  
CHART - ICAO

AERODROME ELEV 134 ft  
HEIGHTS RELATED TO  
THR RWY 21 - ELEV 134 ft

ARR 131.10  
TWR 132.10

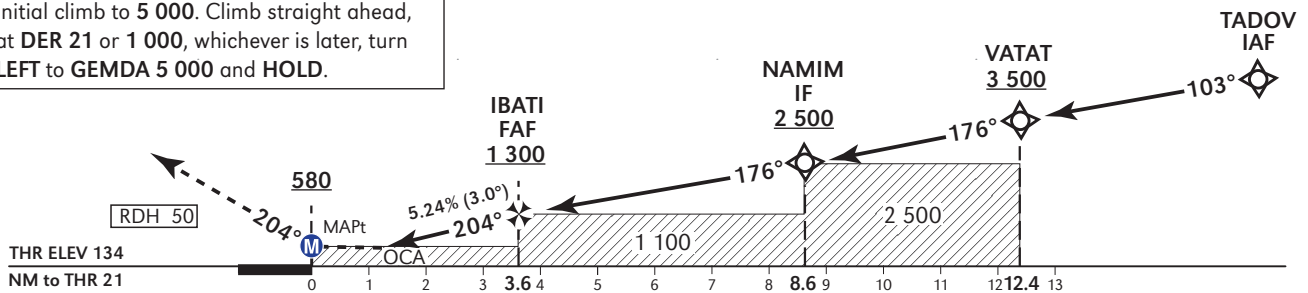
TEL-AVIV /  
BEN-GURION (LLBG)  
RNP X RWY 21



**MISSED APPROACH:**

Initial climb to 5 000. Climb straight ahead, at DER 21 or 1 000, whichever is later, turn LEFT to GEMDA 5 000 and HOLD.

TRANSITION ALT 18 000



OCA (OCH)	A	B	C	D			
LNAV	580 (446)						
Ground speed	KT	90	110	130	150	170	190
Rate of descent	FPM	478	584	690	796	902	1008

LLBG - RNP RWY 21

Navigation Specification	Path Descriptor (Recommended)	Waypoint Identifier	Latitude Longitude	Fly-Over	Course/Track M° (T°)	Distance (NM)	Turn Direction	Altitude (ft)	Speed (Kts)	Remarks
RNAV1	IF	TADOV	32° 15' 15" N 034° 48' 00" E					-8 000 +5 000	-230	IAF
RNP APCH	TF	VATAT	32° 13' 00" N 034° 56' 13" E		103 (107.8)	7.3		+3 500		
RNP APCH	TF	NAMIM	32° 09' 15" N 034° 56' 09" E		176 (180.9)	3.8	R	+2 500		IF
RNP APCH	TF	IBATI	32° 04' 15" N 034° 56' 03" E		176 (180.9)	5.0		+1 300		FAF
RNP APCH	TF	THR21	32° 01' 05.25" N 034° 54' 00.81" E	Y	204 (208.98)	3.6	R	+183		MAPt

Standard missed approach

Navigation Specification	Path Descriptor (Recommended)	Waypoint Identifier	Latitude Longitude	Fly-Over	Course/Track M° (T°)	Distance (NM)	Turn Direction	Altitude (ft)	Speed (Kts)	Remarks
RNP APCH	TF	DER21	31° 59' 46.4" N 034° 53' 09.9" E	Y	204 (208.9)			+1 000	-190	
RNAV1	CA				204 (208.9)			+1 000	-190	
RNAV1	DF	GEMDA	32° 03' 26" N 034° 59' 48" E	Y			L	@5 000	-190	
RNAV1	FM	GEMDA	32° 03' 26" N 034° 59' 48" E		348 (353)		L	@5 000		

Non Precision Final Approach – Slope (Descent angle)	5.24% (3.0°)
--	-----------------

Holding Identification

Holding Fix	Latitude Longitude	Inbound Course/Track M° (T°)	MAX IAS (Kts)	Altitude (ft)	Outbound Time / Distance	Turn Direction
GEMDA	32° 03' 26" N 034° 59' 48" E	348 (353)	250	@5 000	1 Min	L