

**AERODROME
CHART - ICAO**

29° 43' 38" N
035° 00' 51" E

AD ELEV 288 ft

**TWR 121.80
GND 122.00**

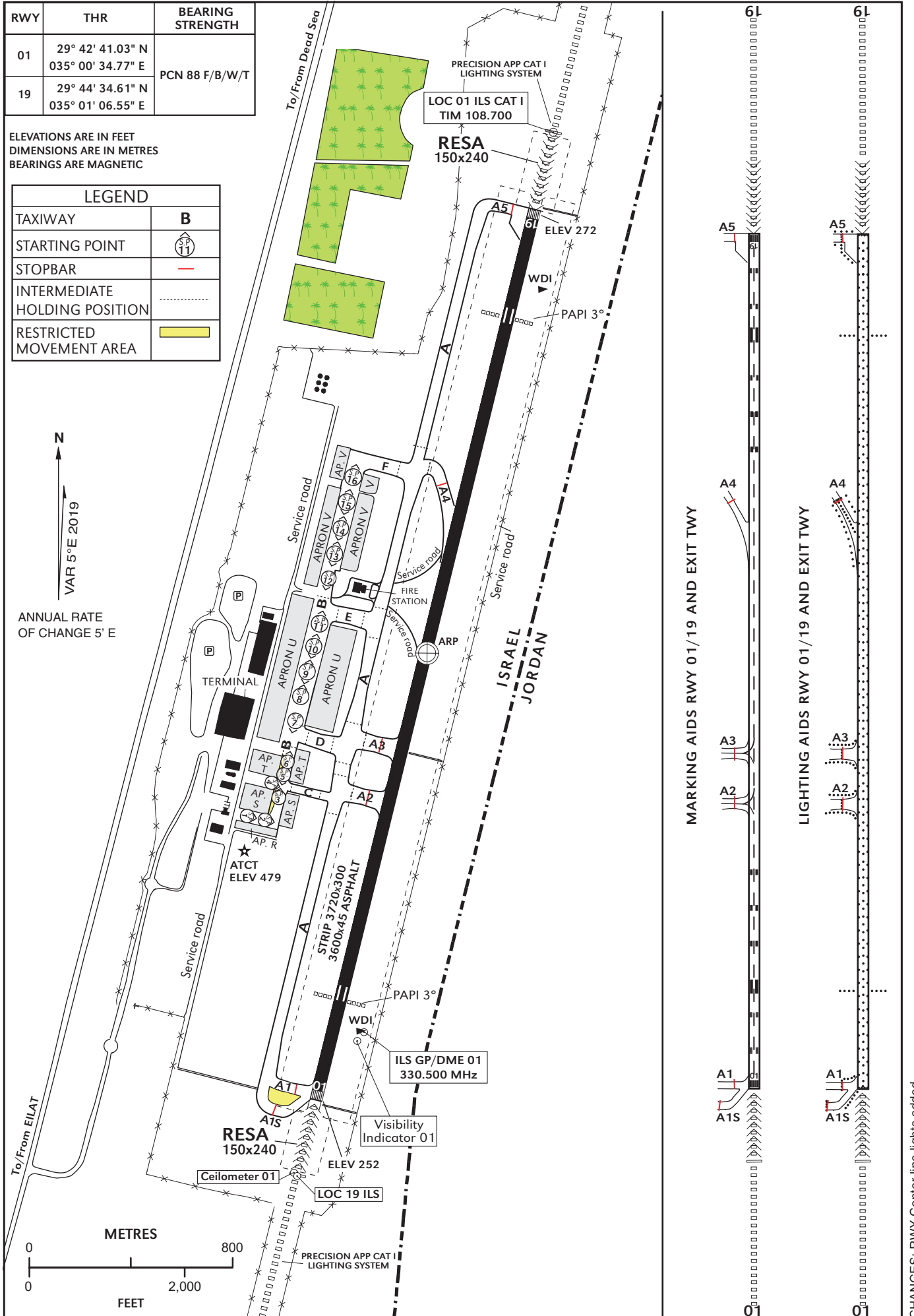
**EILAT / ILAN &
ASAF RAMON (LLR)**

RWY	THR	BEARING STRENGTH
01	29° 42' 41.03" N 035° 00' 34.77" E	PCN 88 F/B/W/T
19	29° 44' 34.61" N 035° 01' 06.55" E	

ELEVATIONS ARE IN FEET
DIMENSIONS ARE IN METRES
BEARINGS ARE MAGNETIC

LEGEND	
TAXIWAY	B
STARTING POINT	
STOPBAR	
INTERMEDIATE HOLDING POSITION	
RESTRICTED MOVEMENT AREA	

N
↑
VAR 5°E 2019
ANNUAL RATE
OF CHANGE 5' E



MARKING AIDS RWY 01/19 AND EXIT TWY

LIGHTING AIDS RWY 01/19 AND EXIT TWY

CHANGES: RWY Center line lights added