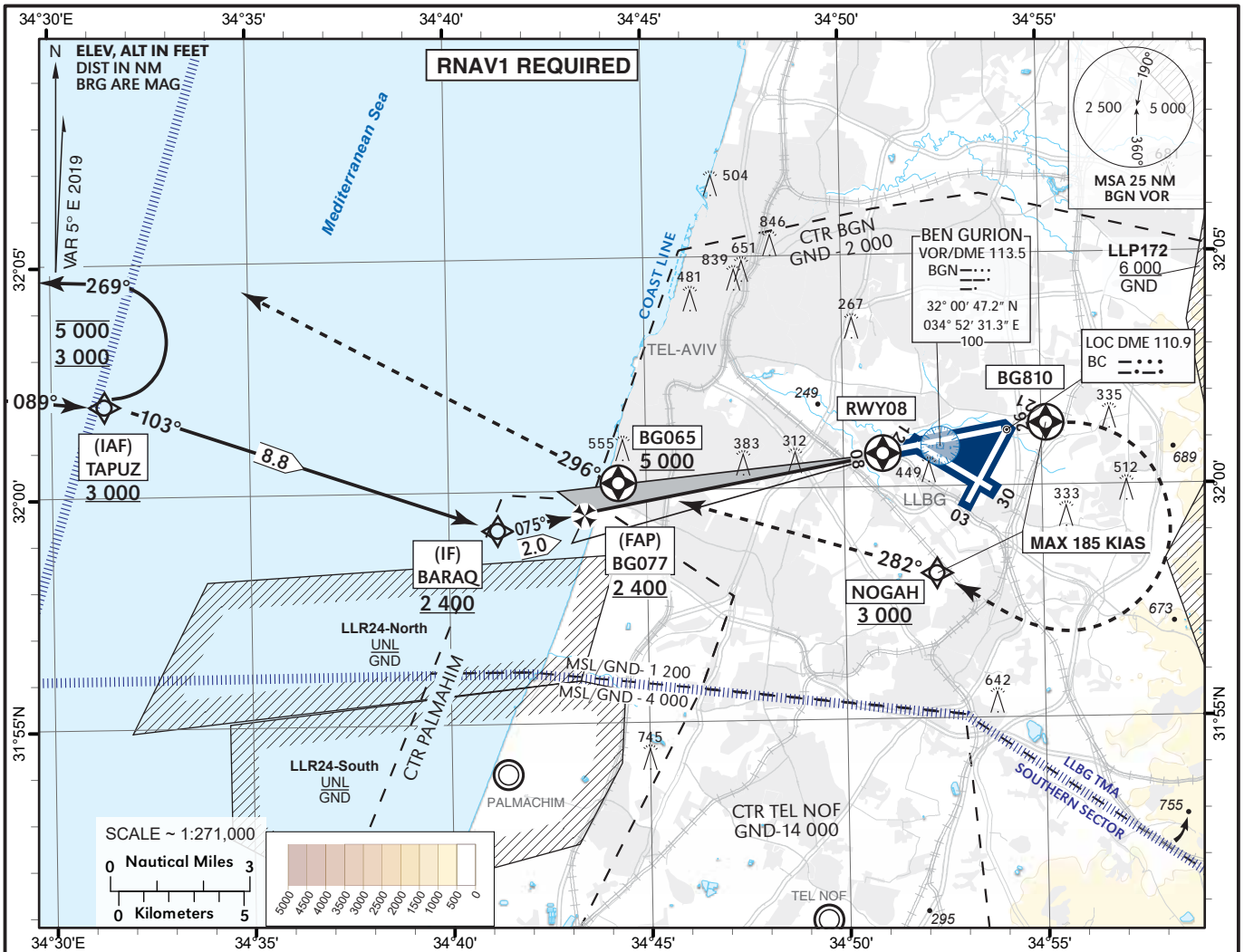


INSTRUMENT APPROACH CHART - ICAO AD ELEV **134 ft** TRANSITION ALT 18 000
 HEIGHTS RELATED TO RWY 08 - ELEV **97 ft**

ATIS Arrival 132.50
 APP 120.50
 TWR 134.60

TEL-AVIV / BEN-GURION (LLBG)
ILS RWY 08



BC ILS DME	5.0	4.0	3.0	2.0
ALT (HAT)	1 760 (1 660)	1 440 (1 340)	1 110 (1 010)	790 (690)

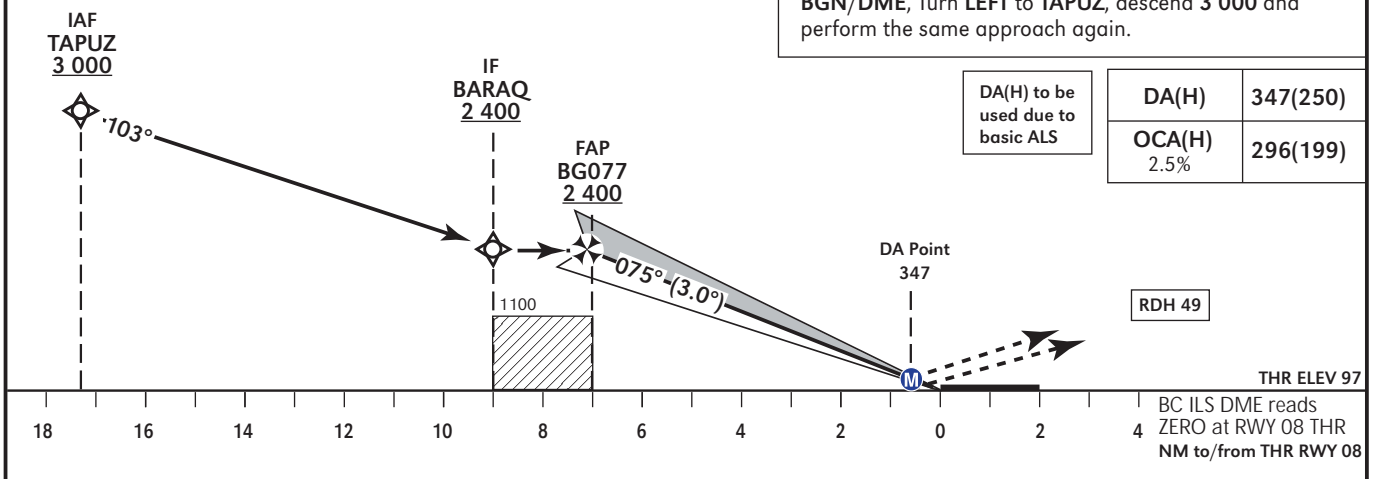
MISSED APPROACH:

Initial climb 5 000. Fly To BG810 on course 075°. Turn RIGHT to NOGAH at or above 3 000 (MAX 185 KIAS), then on course 282° to BG065 at or above 5 000. Continue on track 296° and expect ATC radar vectors.

CAT A & B requires a 5.1% climb gradient up to 5 000 due to airspace restrictions. If unable, advise ATC.
 CAT C & D requires a 4.5% climb gradient up to 5 000 due to airspace restrictions. If unable, advise ATC.

COMMUNICATION FAILURE:

Execute above mentioned missed approach. Once established on track 296°, continue until 20.0D BGN/DME, Turn LEFT to TAPUZ, descend 3 000 and perform the same approach again.



DA(H) to be used due to basic ALS	DA(H)	347(250)
	OCA(H) 2.5%	296(199)

RDH 49

THR ELEV 97

BC ILS DME reads ZERO at RWY 08 THR NM to/from THR RWY 08

CHANGES: MAG VAR, MSA altitude, ILS code Morse add, WPT SAVIT changed to BARAQ.

RWY 08 ILS CAT I

Navigation Specification	Path Descriptor (Recommended)	Waypoint Identifier	Latitude Longitude	Fly-Over	Course/Track M° (T°)	Distance (NM)	Turn Direction	Altitude (ft)	Speed (Kts)	Remarks
RNAV1	IF	TAPUZ	32° 01' 57"N 034° 31' 24" E					+3 000		IAF
RNAV1	TF	BARAQ	31° 59' 10"N 034° 41' 14" E		103 (108.3)	8.8		+2 400		IF
	TF	BG077	31° 59' 32.2"N 034° 43' 36.8" E		075 (079.8)	2.0	L	+2 400		FAP
	TF	RWY08	32° 00' 46.30"N 034° 51' 39.10" E	Y	075 (079.8)	7.0		+146		MAPt (LNAV)

RWY 08 Intermediate and Final Approach

FIX	Latitude Longitude	True Azimuth (reference)	DME distance
IF	31° 59' 10"N 034° 41' 14" E	080 (LOC 08)	9.00 DME BC* 9.73 DME BGN
FAP	31° 59' 32.2"N 034° 43' 36.8" E	080 (LOC 08)	7.00 DME BC* 7.73 DME BGN
			* 0 at THR

GP angle (Slope)	3.0° (5.24%)
------------------	--------------

STANDARD MISSED APPROACH

Navigation Specification	Path Descriptor (Recommended)	Waypoint Identifier	Latitude Longitude	Fly-Over	Course/Track M° (T°)	Distance (NM)	Turn Direction	Altitude (ft)	Speed (Kts)	Remarks
RNAV1	CF	BG810	32° 01' 18"N 034° 55' 07" E	Y	075 (079.8)				-185	
RNAV1	DF	NOGAH	31° 58' 08"N 034° 52' 19" E				R	+3 000	-185	
RNAV1	CF	BG065	32° 00' 10"N 034° 44' 19" E	Y	282 (286.6)			+5 000		
RNAV1	FM	BG065	32° 00' 10"N 034° 44' 19" E	Y	296 (301.0)					

HOLDING IDENTIFICATION

Holding Fix	Latitude Longitude	Inbound Course/Track M° (T°)	MAX IAS (Kts)	Altitude (ft)	Outbound Time / Distance	Turn Direction
TAPUZ	32° 01' 57"N 034° 31' 24" E	089 (094.3)		-5 000 +3 000	1 Min	L