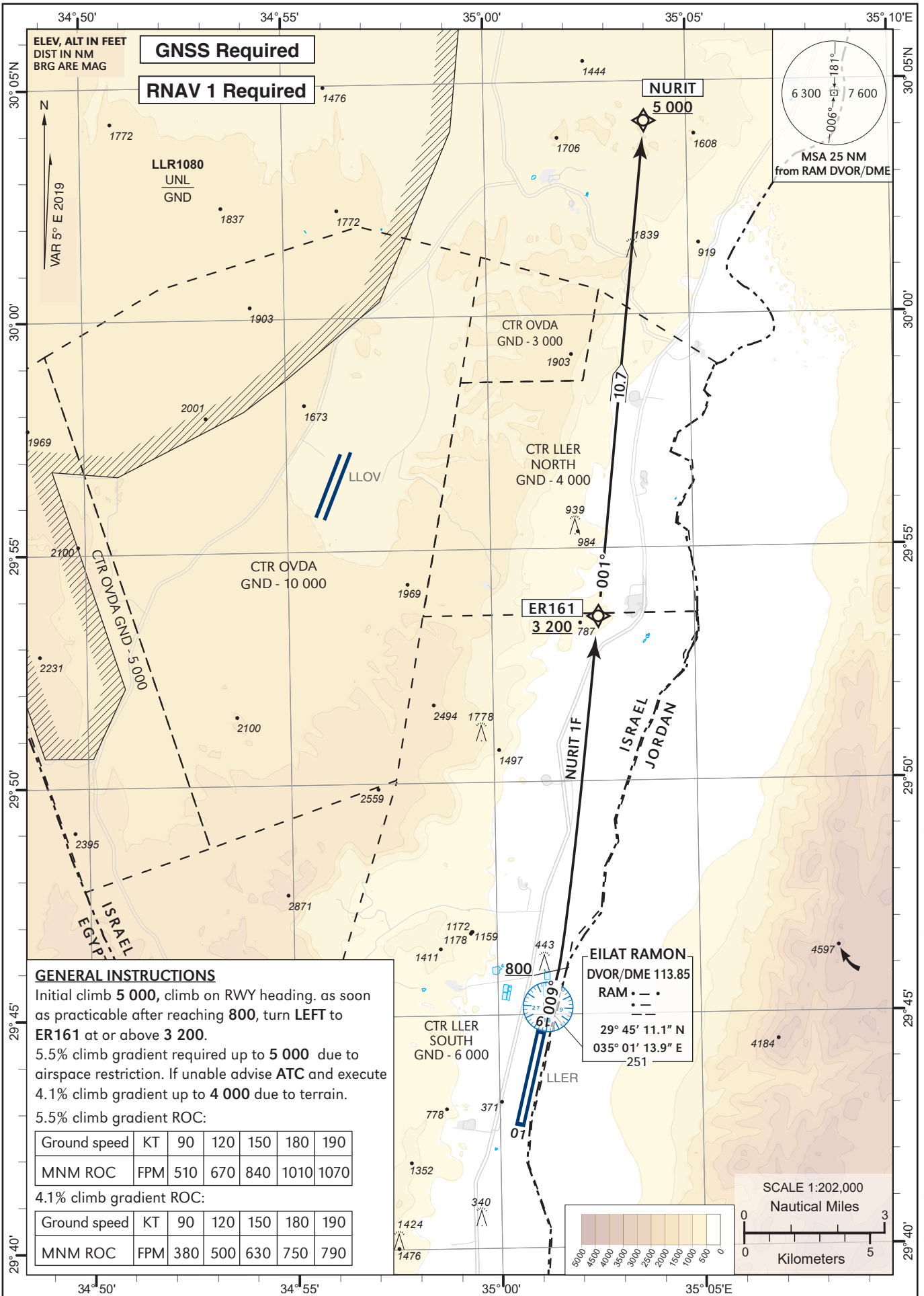


**STANDARD INSTRUMENT
DEPARTURE CHART
(SID) - ICAO**

TRANSITION ALTITUDE BY ATC

**ATIS 132.55
TWR 119.00
ACC 120.90**

**EILAT / ILAN &
ASAF RAMON (LLER)
RWY 01
NURIT 1F**



GENERAL INSTRUCTIONS

Initial climb **5 000**, climb on RWY heading. as soon as practicable after reaching **800**, turn **LEFT** to **ER161** at or above **3 200**.
5.5% climb gradient required up to **5 000** due to airspace restriction. If unable advise **ATC** and execute
4.1% climb gradient up to **4 000** due to terrain.
5.5% climb gradient ROC:

Ground speed	KT	90	120	150	180	190
MNM ROC	FPM	510	670	840	1010	1070

4.1% climb gradient ROC:

Ground speed	KT	90	120	150	180	190
MNM ROC	FPM	380	500	630	750	790

CHANGES: ALT @ER161 changed, RDL-s changed due to MAG VAR change, MSA, TWR freq.

NURIT1F RWY 01

Navigation Specification	Path Descriptor (Recommended)	Waypoint Identifier	Latitude Longitude	Fly-Over	Course/Track M° (T°)	Distance (NM)	Turn Direction	Altitude (ft)	Speed (Kts)	Remarks
RNAV1	CA				009 (013.7)			+800		
RNAV1	DF	ER161	29° 53' 31"N 035° 02' 37" E					+3 200		
RNAV1	TF	NURIT	30° 04' 10"N 035° 03' 57" E		001 (006.2)	10.7		+5 000		