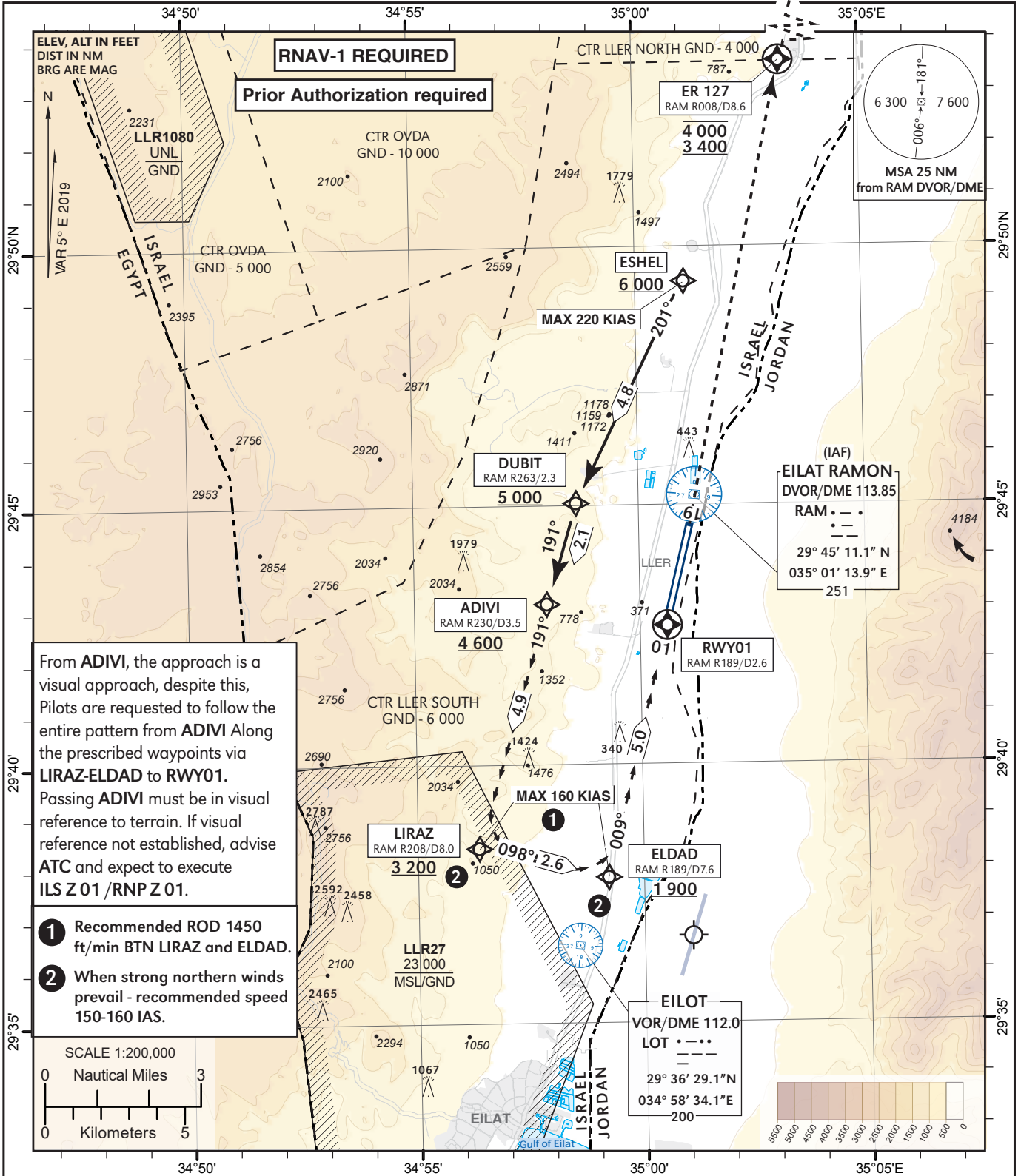


**RNAV VISUAL** AD ELEV **288 ft** TA BY ATC  
OCH RELATED TO  
THR RWY 01 - ELEV **252 ft**

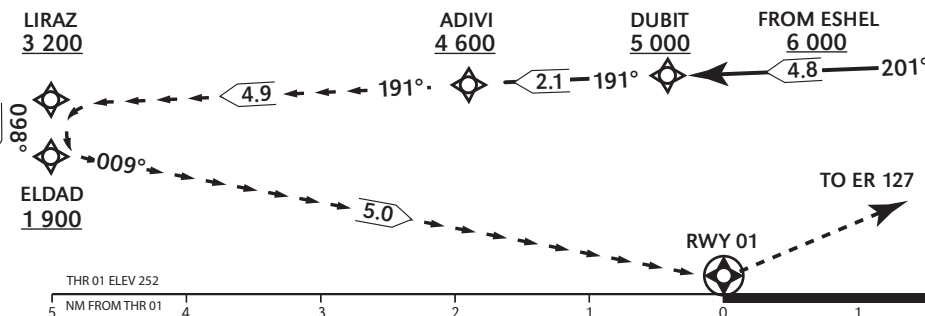
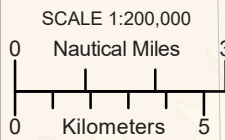
ATIS 132.55  
ACC 120.90  
TWR 119.00

**EILAT/LAN & ASAF RAMON (LLER)**  
RNAV VISUAL approach RWY 01



From ADIVI, the approach is a visual approach, despite this, Pilots are requested to follow the entire pattern from ADIVI Along the prescribed waypoints via LIRAZ-ELDAD to RWY01. Passing ADIVI must be in visual reference to terrain. If visual reference not established, advise ATC and expect to execute ILS Z 01 /RNP Z 01.

- 1 Recommended ROD 1450 ft/min BTN LIRAZ and ELDAD.
- 2 When strong northern winds prevail - recommended speed 150-160 IAS.



NM THR 01	4	3	2	1
ALT	1590	1270	950	630

**GO AROUND**  
Initial climb 4 000.  
Climb to ER127 between 3 400 and 4 000, then towards NURIT 5 000, contact ATC and expect instructions.

CHANGES: WPT ER127 updated in the Coding table.

LLER RNAV VISUAL RWY 01

Navigation Specification	Path Descriptor (Recommended)	Waypoint Identifier	Latitude Longitude	Fly-Over	Course/Track M° (T°)	Distance (NM)	Turn Direction	Altitude (ft)	Speed (Kts)	Remarks
RNAV1	IF	ESHEL	29° 49' 20" N 035° 01' 04" E					+6 000	-220	
RNAV1	TF	DUBIT	29° 45' 04" N 034° 58' 37" E		201 (206.5)	4.8		+5 000		
RNAV1	TF	ADIVI	29° 43' 05" N 034° 57' 57" E		191 (196.3)	2.1	L	+4 600		
RNAV1	TF	LIRAZ	29° 38' 23" N 034° 56' 22" E		191 (196.5)	4.9		+3 200	-160	
RNAV1	TF	ELDAD	29° 37' 49" N 034° 59' 13" E		098 (103.1)	2.6	L	+1 900	-160	
RNAV1	TF	RWY01	29° 42' 41.03" N 035° 00' 34.77" E	Y	009 (013.7)	5.0	L		-160	
<b>Go Around</b>										
RNAV1	TF	ER127	29° 53' 35" N 035° 03' 16" E	Y	007 (012.1)	11.1		-4 000 +3 400		
RNAV1	TF	NURIT	30° 04' 10" N 035° 03' 57" E		358 (003.2)	10.6		-10 000 +5 000		
RNAV1	HM	NURIT	30° 04' 10" N 035° 03' 57" E	Y	185 (190.2)		R	-10 000 +5 000	-215	

NURIT HOLDING IDENTIFICATION

Holding Fix	Latitude Longitude	Inbound Course/Track M° (T°)	MAX IAS (Kts)	Altitude (ft)	Outbound Time / Distance	Turn Direction
NURIT	30° 04' 10"N 035° 03' 57" E	185 (190.2)	215	-10 000 +5 000	1 Min	R