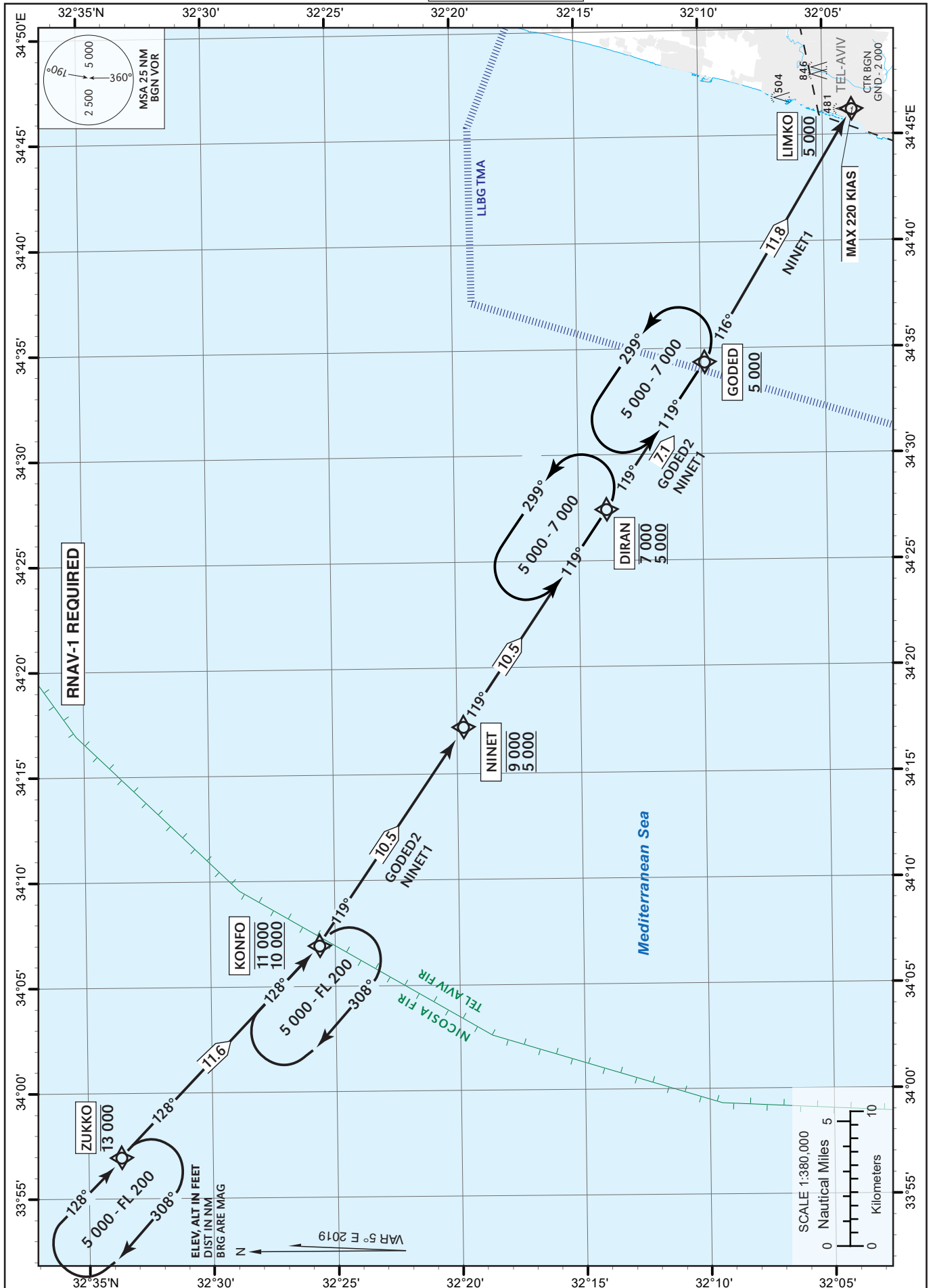


STANDARD ARRIVAL  
CHART - INSTRUMENT  
(RNAV STAR) - ICAO

TRANSITION LVL 200

ATIS Arrival	132.50
ACC	121.40
APP	120.50
TWR	134.60

TEL-AVIV / BEN-GURION (LLBG)  
RWYs 12, 30  
GODED2, NINET1



CHANGES: Routing change, new WPT KONFO, ZUKKO, NINET added. WPT SOLIN removed, WPT RIMON change to WPT DIRAN.

**GODED2 STAR RWY 12**

Navigation Specification	Path Descriptor (Recommended)	Waypoint Identifier	Latitude Longitude	Fly-Over	Course/Track M° (T°)	Distance (NM)	Turn Direction	Altitude (ft)	Speed (Kts)	Remarks
RNAV1	IF	ZUKKO	32° 33' 42"N 033° 56' 57" E					-13 000		
RNAV1	TF	KONFO	32° 25' 42"N 034° 06' 56" E		128 (133.4)	11.6		-11 000 +10 000		
RNAV1	TF	NINET	32° 19' 49"N 034° 17' 13" E		119 (124.0)	10.5	L	-9 000 +5 000		
RNAV1	TF	DIRAN	32° 13' 55"N 034° 27' 27" E		119 (124.0)	10.5		-7 000 +5 000		
RNAV1	TF	GODED	32° 09' 54.0"N 034° 34' 22.0" E		119 (124.3)	7.1		+5 000		IAF

**NINET1 STAR RWY 30**

Navigation Specification	Path Descriptor (Recommended)	Waypoint Identifier	Latitude Longitude	Fly-Over	Course/Track M° (T°)	Distance (NM)	Turn Direction	Altitude (ft)	Speed (Kts)	Remarks
RNAV1	IF	ZUKKO	32° 33' 42"N 033° 56' 57" E					-13 000		
RNAV1	TF	KONFO	32° 25' 42"N 034° 06' 56" E		128 (133.4)	11.6		-11 000 +10 000		
RNAV1	TF	NINET	32° 19' 49"N 034° 17' 13" E		119 (124.0)	10.5	L	-9 000 +5 000		
RNAV1	TF	DIRAN	32° 13' 55"N 034° 27' 27" E		119 (124.0)	10.5		-7 000 +5 000		
RNAV1	TF	GODED	32° 09' 54"N 034° 34' 22" E		119 (124.3)	7.1		+5 000		
RNAV1	TF	LIMKO	32° 03' 48.0"N 034° 46' 18.0" E		116 (121.0)	11.8		@5 000	-220	IAF

**Holding Identification**

Holding Fix	Latitude Longitude	Inbound Course/Track M° (T°)	MAX IAS (Kts)	Altitude (ft)	Outbound Time / Distance	Turn Direction
ZUKKO	32° 33' 42"N 033° 56' 57" E	128 (133.4)		-FL 200 +5 000	1 Min	R
KONFO	32° 25' 42"N 034° 06' 56" E	128 (133.4)		-FL 200 +5 000	1 Min	R
DIRAN	32° 13' 55"N 034° 27' 27" E	119 (124.3)	250	-7 000 +5 000	1 Min	L
GODED	32° 09' 54"N 034° 34' 22" E	119 (124.3)	250	-7 000 +5 000	1 Min	L