

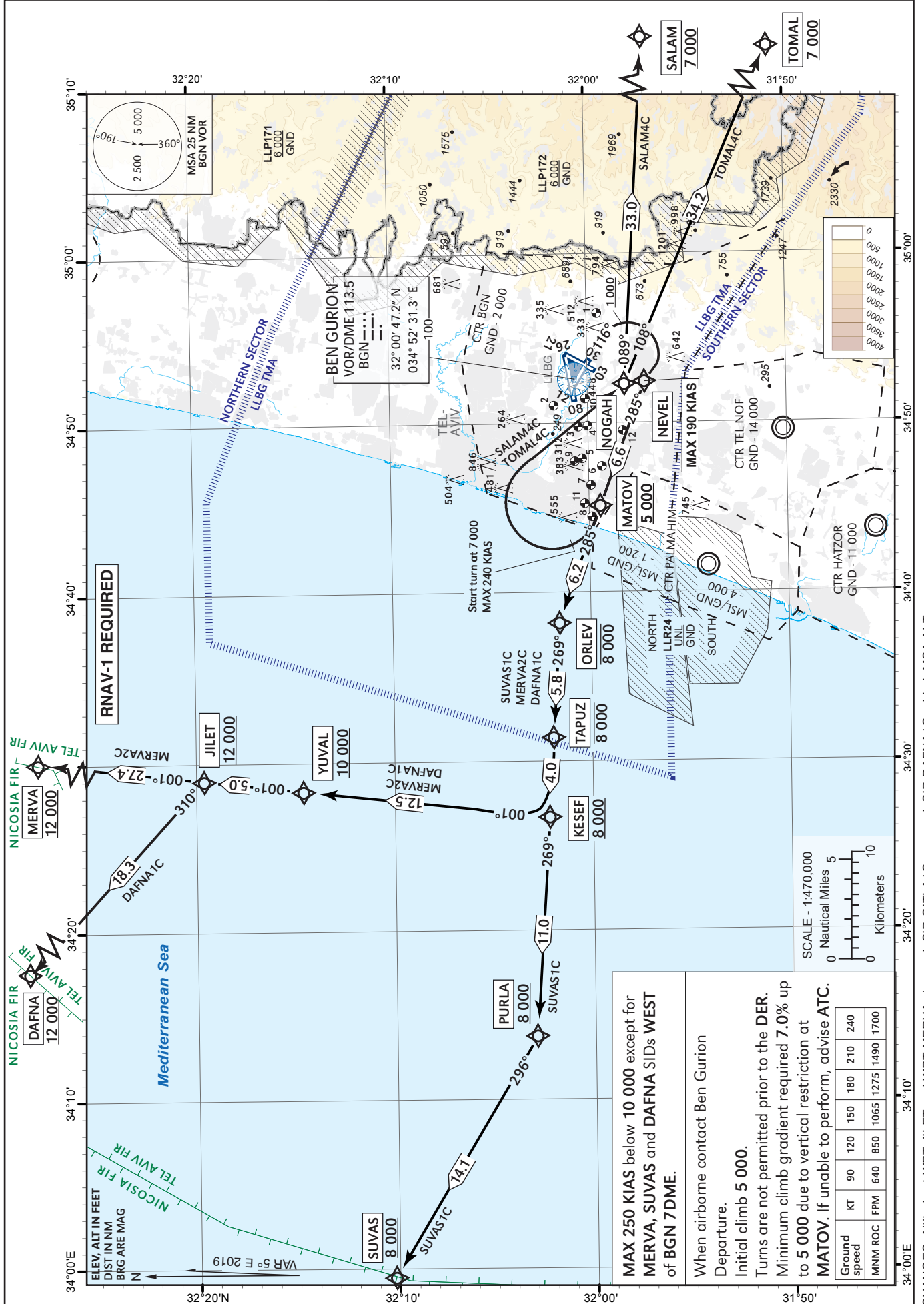
STANDARD INSTRUMENT  
DEPARTURE CHART  
(SID) - ICAO

TRANSITION  
ALT 18 000

ATIS departue 132.80  
TWR 134.60  
DEP 120.50  
ACC 121.40

TEL-AVIV / BEN-GURION (LLBG)  
RWY 12

SALAM4C, TOMAL4C, SUVAS1C, DAFNA1C, MERVA2C



MAX 250 KIAS below 10 000 except for  
MERVA, SUVAS and DAFNA SIDs WEST  
of BGN 7DME.

When airborne contact Ben Gurion  
Departure.

Initial climb 5 000.

Turns are not permitted prior to the DER.

Minimum climb gradient required 7.0% up  
to 5 000 due to vertical restriction at

MATOV. If unable to perform, advise ATC.

Ground speed	KT	90	120	150	180	210	240
MNM ROC	FPM	640	850	1065	1275	1490	1700

CHANGES: Altitude at WPT JILET and WPT MERVA changed. SID GITLA1C removed. SID DAFNA1C added, MSA ALT.

Tabular description in AD 2.5-31A