

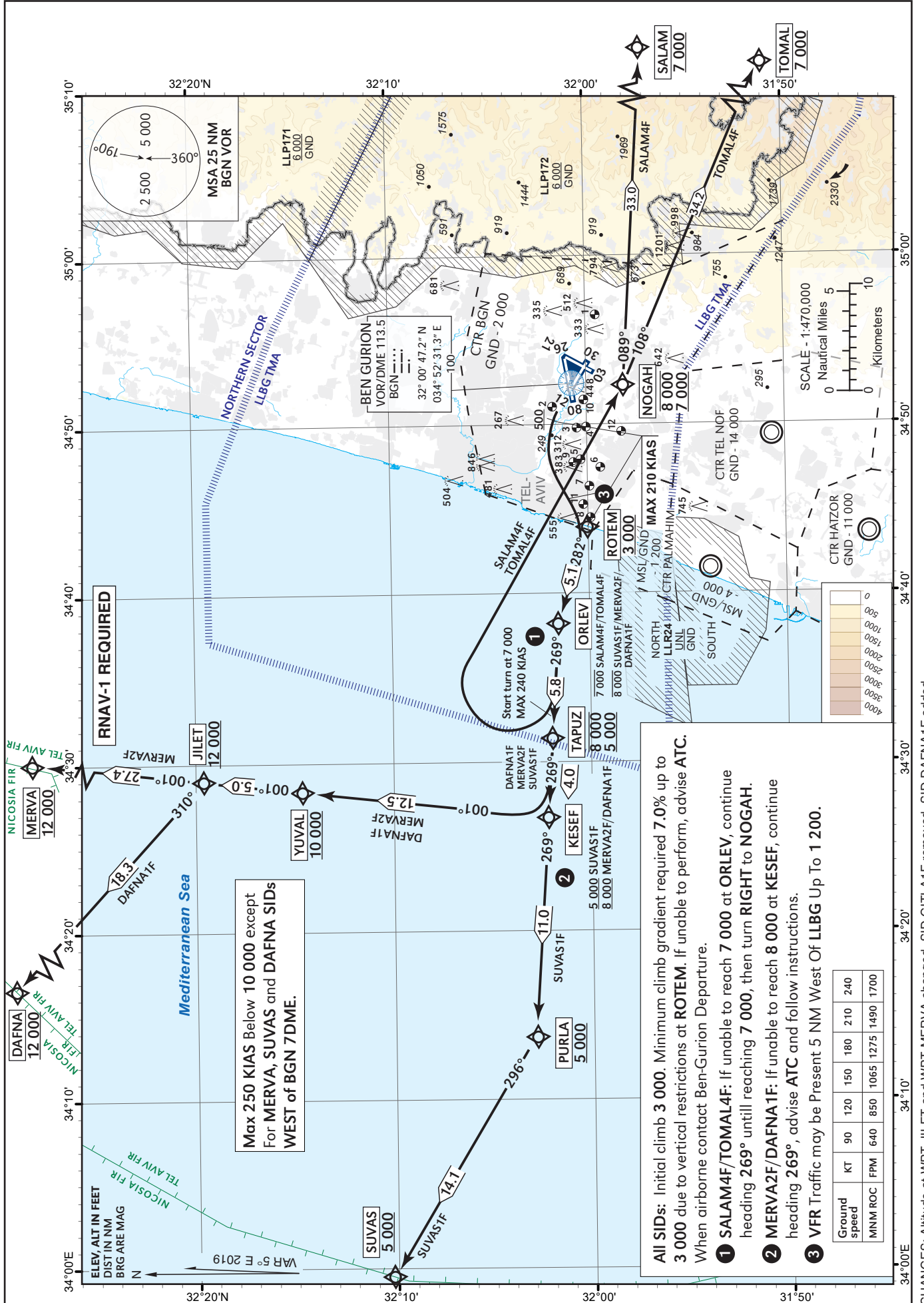
STANDARD DEPARTURE  
CHART - INSTRUMENT  
(SID) - ICAO

TRANSITION  
ALT 18 000

ATIS departue 132.80  
TWR 134.60  
DEP 120.50  
ACC 121.40

TEL-AVIV / BEN-GURION (LLBG)  
RWY 30

SALAM4F, TOMAL4F, SUVAS1F, DAFNA1F, MERVA2F



Max 250 KIAS Below 10 000 except  
For MERVA, SUVAS and DAFNA SIDs  
WEST of BGN 7DME.

**All SIDs:** Initial climb 3 000. Minimum climb gradient required 7.0% up to 3 000 due to vertical restrictions at ROTEM. If unable to perform, advise ATC. When airborne contact Ben-Gurion Departure.

**1 SALAM4F/TOMAL4F:** If unable to reach 7 000 at ORLEV, continue heading 269° until reaching 7 000, then turn RIGHT to NOGAH.

**2 MERVA2F/DAFNA1F:** If unable to reach 8 000 at KESEF, continue heading 269°, advise ATC and follow instructions.

**3 VFR Traffic** may be Present 5 NM West Of LBG Up To 1 200.

CHANGES: Altitude at WPT JILET and WPT MERVA changed, SID GITLA1F removed, SID DAFNA1F added.

Tabular description in AD 2.5-33A