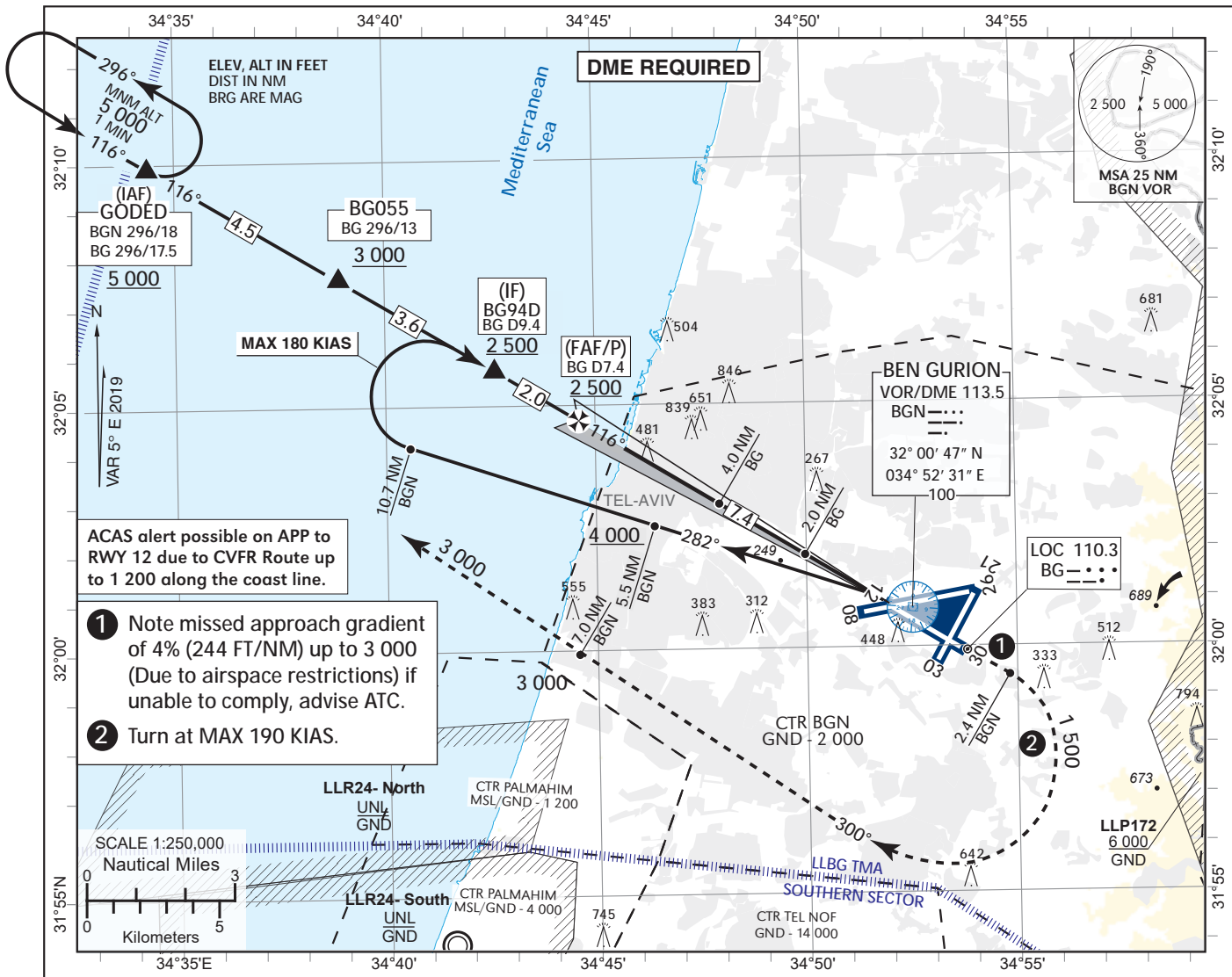


**INSTRUMENT
APPROACH
CHART - ICAO**

AD ELEV **134 ft**
HEIGHTS RELATED TO
THR RWY 12 - ELEV **103 ft**

APP **120.50**
TWR **134.60**

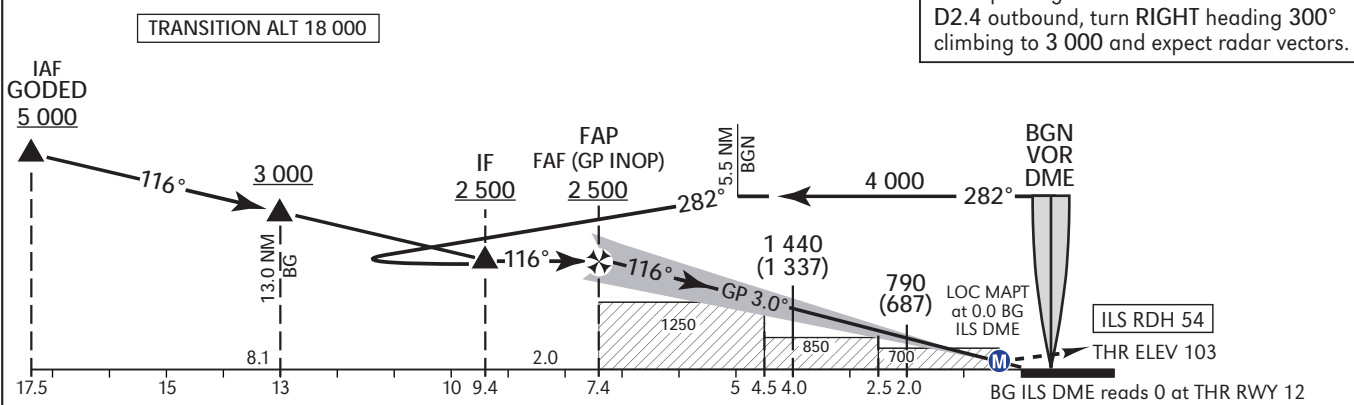
**TEL-AVIV / BEN-GURION (LLBG)
ILS RWY 12
CAT I**



- ACAS alert possible on APP to RWY 12 due to CVFR Route up to 1 200 along the coast line.
- Note missed approach gradient of 4% (244 FT/NM) up to 3 000 (Due to airspace restrictions) if unable to comply, advise ATC.
 - Turn at MAX 190 KIAS.

BG ILS DME	6 DME	4 DME	2 DME
ALTITUDE	2 090	1 440	790

MISSED APPROACH:
Initial climb 3 000, Climb straight ahead, when passing 1 500 but not before BGN D2.4 outbound, turn RIGHT heading 300° climbing to 3 000 and expect radar vectors.



OCA (H)		A	B	C	D	Circling	
Straight-in	CAT I	303 (200)					NA
	GP INOP	700 (597)					
GS	kt	90	110	130	150	170	190
ROD (5.2%)	ft/min	478	584	690	796	902	1 008

CHANGES: DME range at FAF changed, BRG and MSA changed, COMMM failure removed.

LLBG ILS/LOC ONLY RWY 12

Significant Point	Latitude Longitude	True Azimut (Reference)	DME distance	Speed
GODED (IAF)	32° 09' 54"N 034° 34' 22" E	301.4° (LOC 12)	17.5 DME BG* 17.9 DME BGN	
BG055	32° 07' 34"N 034° 38' 58" E	301.4° (LOC 12)	12.9 DME BG* 13.4 DME BGN	
BG94D (IF)	32° 05' 44"N 034° 42' 36" E	301.4° (LOC 12)	9.4 DME BG* 9.8 DME BGN	
FAF/FAP	32° 04' 42.0"N 034° 44' 36.0" E	301.4° (LOC 12)	7.4 DME BG* 7.8 DME BGN	
MAPt (GP INOP)	32° 00' 52"N 034° 51' 59" E		0.4 DME BGN	

* 0 at THR

Precision Final Approach – Descent angle (Slope)	3.0° (5.24%)
Non Precision Final Approach – Slope (Descent angle)	5.24% (3.0°)

HOLDING IDENTIFICATION

Holding Fix	Latitude Longitude	Inbound Course/Track M° (T°)	MAX IAS (Kts)	Altitude (ft)	Outbound Time / Distance	Turn Direction
GODED	32° 09' 54"N 034° 34' 22" E	116 (121.0)	230	+5 000	1 Min	L