

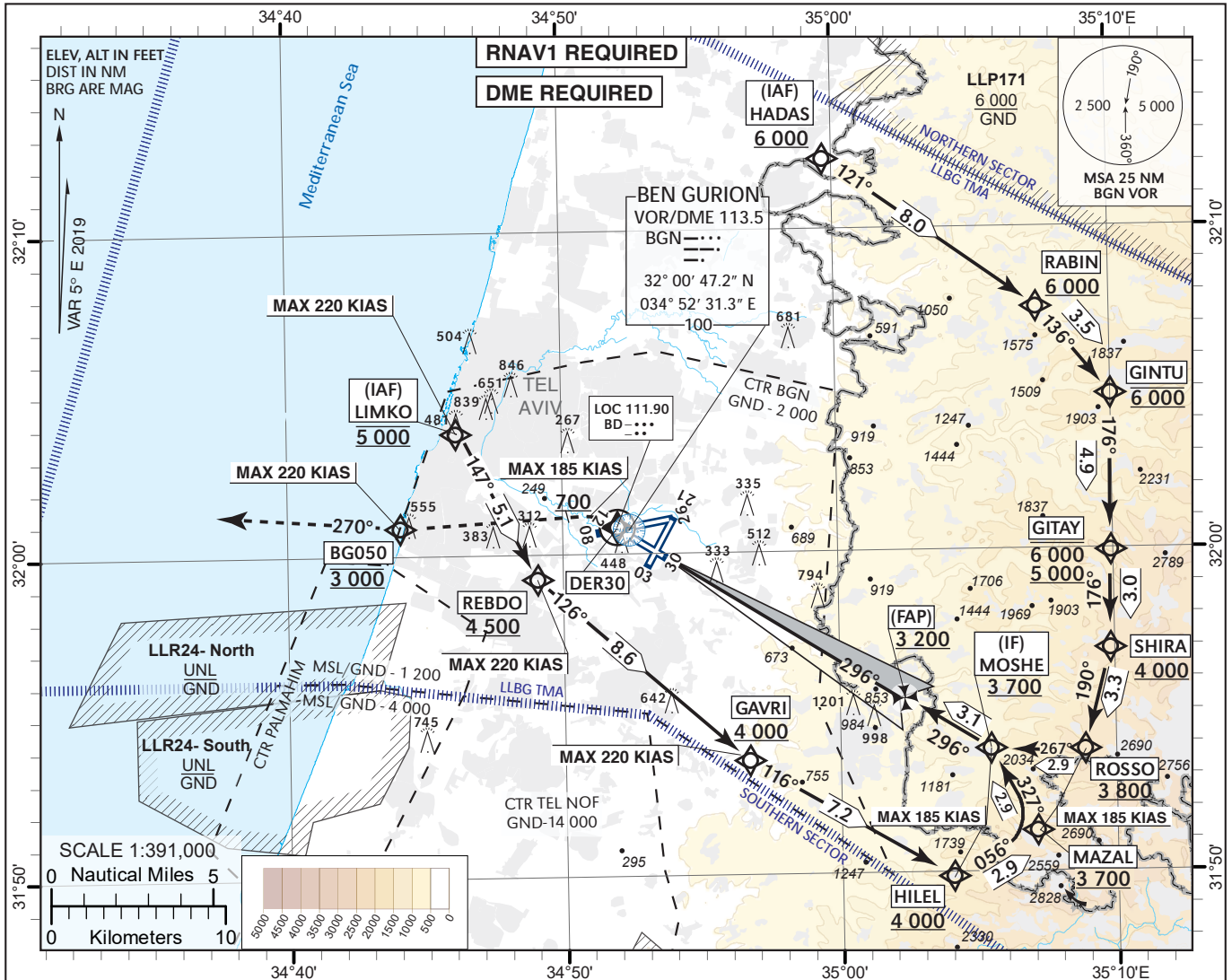
INSTRUMENT  
APPROACH  
CHART - ICAO

AERODROME ELEV **134 ft**  
HEIGHTS RELATED TO  
THR RWY 30 - ELEV **130 ft**

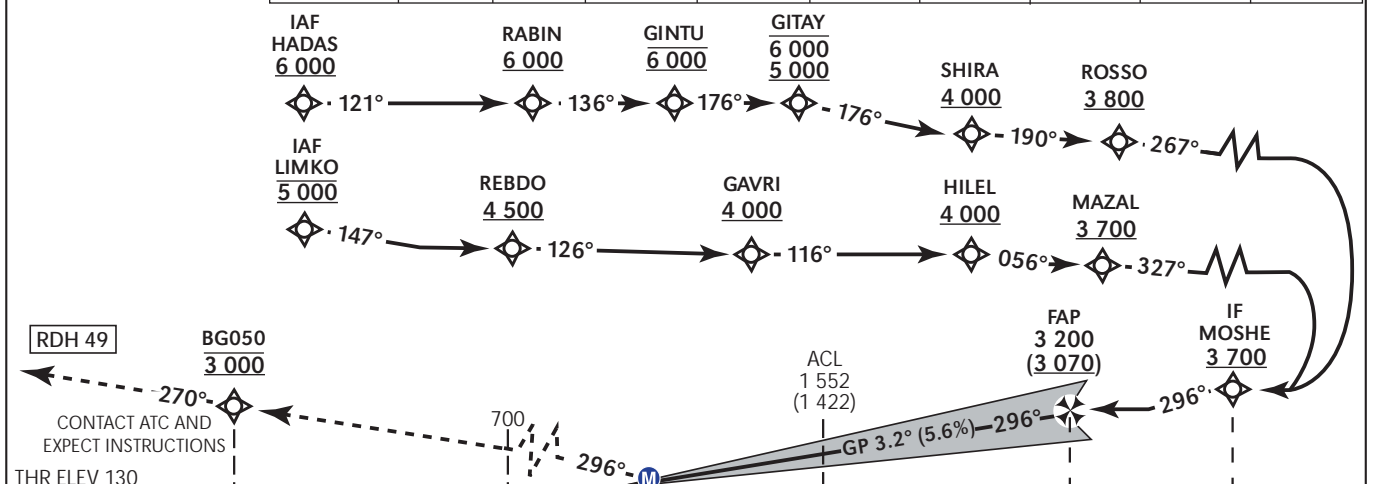
TA 18 000

ATIS 132.50  
ARR 131.10  
APP 120.50  
TWR 134.60

TEL-AVIV / BEN-GURION (LLBG)  
ILS RWY 30



RWY30 BD ILS DME	1	2	3	4	5	6	7	8	8.7
ALT (HGT)	520 (390)	870 (740)	1 210 (1 080)	1 560 (1 430)	1 900 (1 770)	2 250 (2 120)	2 610 (2 480)	2 960 (2 830)	3 200 (3 080)



CONTACT ATC AND EXPECT INSTRUCTIONS  
THR ELEV 130  
NM to THR RWY 30

**MISSED APPROACH:**  
Initial climb **3 000**. Climb on course **296°** (MAX 185 KIAS), at or above **700**, Not before **DER 30**, turn **LEFT** direct to **BG050** (MAX 220 KIAS) at **3 000**. Continue on track **270°**, climb to **5 000**, contact **ATC** and expect instructions.  
**BG050** at **3 000** requires a **5.9%** minimum climb gradient due to airspace restrictions, if unable inform **ATC**.

OCA (OCH)	A	B	C	D			
STA CAT I	271(141)	283(153)	291(161)	302(172)			
CIRCLING	N/A						
GS	kt	80	100	120	140	160	180
ROD: 5.6%	ft/min	453	566	679	793	906	1 019

CHANGES: ARR Freq. added, Coding at WPT BG050 changed, MISSED APPROACH description changed.

**RWY 30 ILS CAT I From LIMKO**

Navigation Specification	Path Descriptor (Recommended)	Waypoint Identifier	Latitude Longitude	Fly-Over	Course/Track M° (T°)	Distance (NM)	Turn Direction	Altitude (ft)	Speed (Kts)	Remarks
RNAV1	IF	LIMKO	32° 03' 48" N 34° 46' 18" E					@5 000	-220	IAF
RNAV1	TF	REBDO	31° 59' 17" N 34° 49' 04" E		147 (152.4)	5.1		+4 500	-220	
RNAV1	TF	GAVRI	31° 53' 35" N 34° 56' 44" E		126 (131.1)	8.6	L	+4 000	-220	
RNAV1	TF	HILEL	31° 49' 53" N 35° 04' 02" E		116 (120.7)	7.2		+4 000	-185	
RNAV1	TF	MAZAL	31° 51' 17" N 35° 07' 04" E		056 (061.5)	2.9	L	+3 700	-185	
RNAV1	TF	MOSHE	31° 53' 51" N 35° 05' 27" E		327 (331.6)	2.9	L	+3 700	-185	IF

**RWY 30 ILS CAT I From HADAS**

Navigation Specification	Path Descriptor (Recommended)	Waypoint Identifier	Latitude Longitude	Fly-Over	Course/Track M° (T°)	Distance (NM)	Turn Direction	Altitude (ft)	Speed (Kts)	Remarks
RNAV1	IF	HADAS	32° 12' 13" N 34° 59' 40" E					+6 000		IAF
RNAV1	TF	RABIN	32° 07' 32" N 35° 07' 21" E		121 (125.6)	8.0		+6 000		
RNAV1	TF	GINTU	32° 04' 48" N 35° 09' 58" E		136 (140.7)	3.5	R	@6 000		
RNAV1	TF	GITAY	31° 59' 55" N 35° 09' 53" E		176 (180.8)	4.9	R	- 6000 +5000		
RNAV1	TF	SHIRA	31° 56' 55" N 35° 09' 50" E		176 (180.8)	3.0		+4 000		
RNAV1	TF	ROSSO	31° 53' 46" N 35° 08' 51" E		190 (195.0)	3.3		+3 800	-185	
RNAV1	TF	MOSHE	31° 53' 51" N 35° 05' 27" E		267 (271.8)	2.9	R	+3 700	-185	IF

**RWY 30 Intermediate and Final Approach**

FIX	Latitude Longitude	True Azimuth (reference)	DME distance
IF	31° 53' 51" N 35° 05' 27" E	121.35 (LOC 30)	11.76 DME BD* 12.99 DME BGN
FAP	31° 55' 27" N 35° 02' 23" E	121.35 (LOC 30)	8.70 DME BD* 9.93 DME BGN
			* 0 at THR

GP angle (Slope)	3.20° (5.59%)
------------------	---------------

**Standard missed approach**

Navigation Specification	Path Descriptor (Recommended)	Waypoint Identifier	Latitude Longitude	Fly-Over	Course/Track M° (T°)	Distance (NM)	Turn Direction	Altitude (ft)	Speed (Kts)	Remarks
RNAV1	TF	DER30	32° 00' 51.1" N 034° 52' 00.6" E	Y	296 (301.4)	1.7	L	+700	-185	
RNAV1	CA				296 (301.3)			+700	-185	
RNAV1	DF	BG050	32° 00' 56" N 034° 44' 06" E				L	@3 000	-220	
RNAV1	FM				270 (275.4)		R	@5 000		