

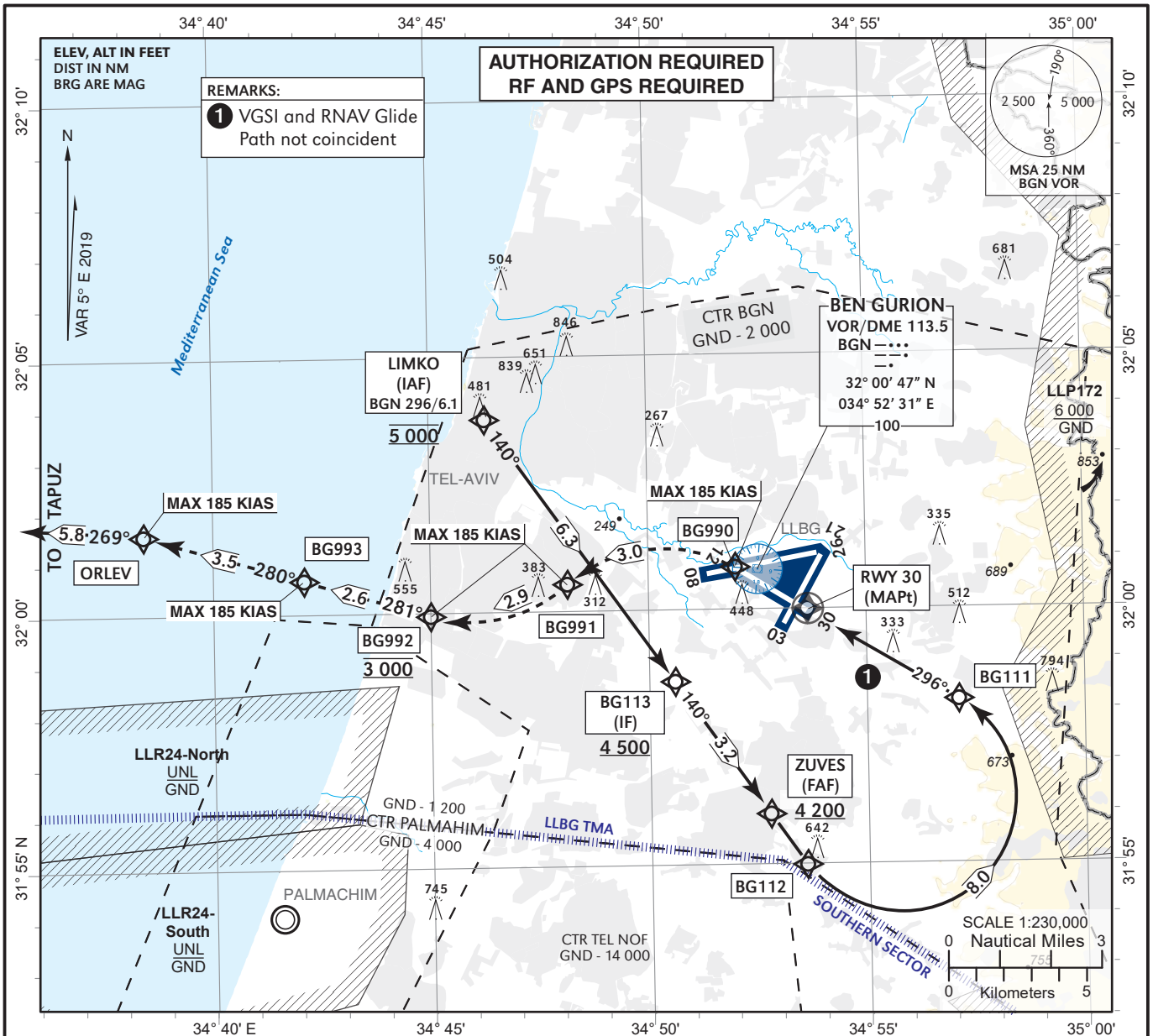
INSRUMENT APPROACH CHART - ICAO

AD ELEV 134 ft
HEIGHTS RELATED TO THR RWY 30 - ELEV 130 ft

TRANSITION ALTITUDE 18 000

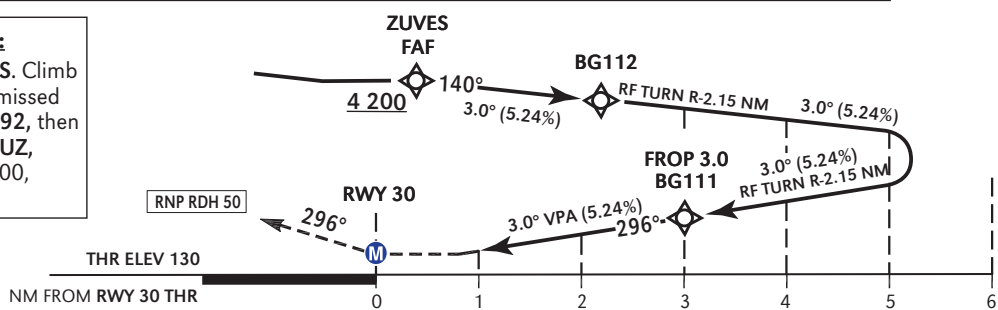
ATIS Arrival 132.50
APP 120.50
TWR 134.60

TEL-AVIV / BEN-GURION (LLBG)
RNP Y RWY 30 (AR)



RNP AR	2.0	3.0	4.0	5.0
ALT (HAT)	820 (690)	1 043 (1 013)	1 467 (1 337)	1 794 (1 664)

MISSED APPROACH:
Do not exceed 185 KIAS. Climb 3 000 ft on the RNAV missed approach route to BG992, then to BG993, ORLEV, TAPUZ, DIRAN at or above 5 000, and hold.



RNP AR Approach		RNP 0.3 Approach		DA (H) 410 (280)		Circling		
A	VIS - 1200 m						NOT AUTHORIZED	
B								
C								
D								

Criteria - TERPS	GS	KT	90	100	120	140	160	180	1. SPECIAL AIRCRAFT & AIRCREW CERTIFICATION REQUIRED. 2. RF and GPS required 3. For uncompensated Baro-VNAV systems, procedure NA below 9°C and above 54°C.
Rate of descent	FPM	477	530	636	743	849	955		

CHANGES: MSA, WPT name and BNG changed.

Procedure: RNP Y RWY 30 (AR)

SERIAL NUMBER	Nav. Spec. RNP	Path Descriptor (recommended)	WPT Name	Lat./Long	Fly over/by	Distance (NM)	Magnetic Course (Degrees)	Altitude (ft)	Speed (Kts)	VPA/TCH	Turn Direction	Magnetic variation (Degrees)	Arc Radius (NM)	Arc Center Lat./Long
1	1	IF	LIMKO (IAF)	32° 03' 48.0" N 034° 46' 18.0" E	FB	9.93	118.31	at 5 000	-220			- 4.5		
2	0.3	TF	BG113 (IF)	31° 58' 36.7" N 034° 50' 36.6" E	FB	6.34	140.16	+ 4 500	-220		R	- 4.5		
3	0.3	TF	ZUVES (FAF)	31° 56' 00.4" N 034° 52' 46.2" E	FB	3.18	140.2	+ 4 200			R	- 4.5		
4	0.3	TF	BG112	31° 55' 00.2" N 034° 53' 36.0" E	FB	1.22	140.23				R	- 4.5		
5	0.3	RF-LEFT	BG111	31° 58' 13.4" N 034° 57' 06.5" E	FB	7.97					L	- 4.5	2.24	BG711 31° 56' 18.0" N 034° 55' 45.0" E
6	0.3	TF	RWY30	31° 59' 59.7" N 034° 53' 39.1" E	FO	3.43	296.51			3.0/50	L	- 4.5		
7	0.3	TF	BG990	32° 00' 50.3" N 034° 52' 00.2" E	FB	1.63	296.48		-185		L	- 4.5		
8	0.4	RF-LEFT	BG991	32° 00' 32.8" N 034° 48' 08.35" E	FB	3.53			-185		L	- 4.5	2.8	BG712 31° 58' 25.7" N 034° 50' 18.4" E
9	0.6	RF-RIGHT	BG992	31° 59' 57.3" N 034° 45' 00.0" E	FB	2.85		at 3 000	-185		R	- 4.5	2.85	BG713 32° 02' 42.0" N 034° 45' 56.0" E
10	0.8	TF	BG993	32° 00' 40.0" N 034° 42' 06.9" E	FB	2.55	281.15		-185		R	- 4.5		
11	1	TF	ORLEV	32° 01' 35.0" N 034° 38' 12.0" E	FB	3.5	280.3		-185		L	- 4.5		
12	1	TF	TAPUZ	32° 01' 57.0" N 034° 31' 24.0" E	FB	5.8	268.65		-185		R	- 4.5		
13	1	TF	DIRAN	32° 13' 55.0" N 034° 27' 27.0" E	FB	12.4	339.32	+ 5 000	-185			- 4.5		
14	1	HM	DIRAN	32° 13' 55.0" N 034° 27' 27.0" E	FB		119	+ 5 000	-185			- 4.5		