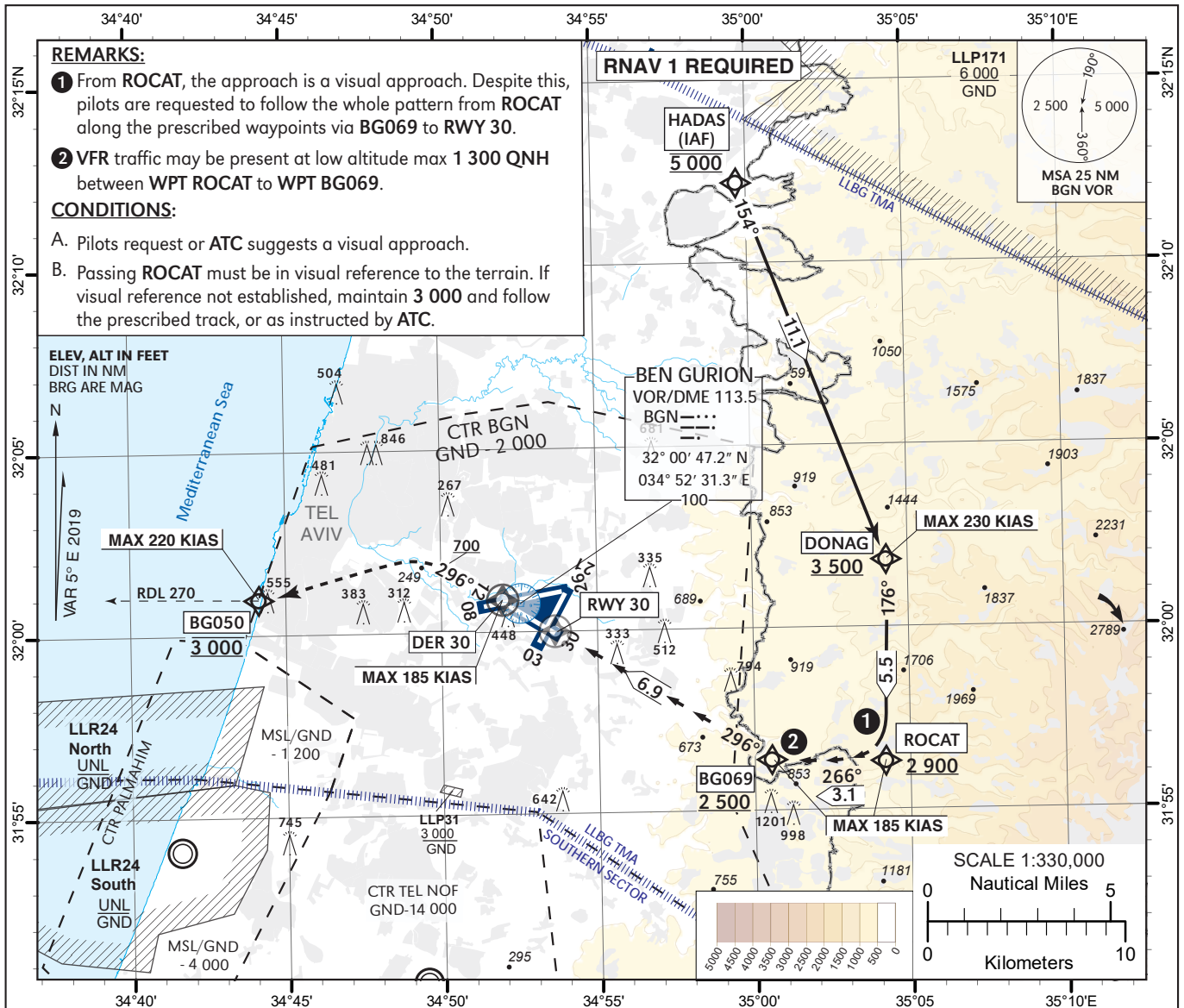


**VISUAL  
APPROACH CHART  
(with prescribed RNAV track)**

**AERODROME ELEV 134 ft  
HEIGHTS RELATED TO  
THR RWY 30 - ELEV 130 ft**

**ATIS ARRIVAL 132.50  
ARR 131.10  
TWR 134.60**

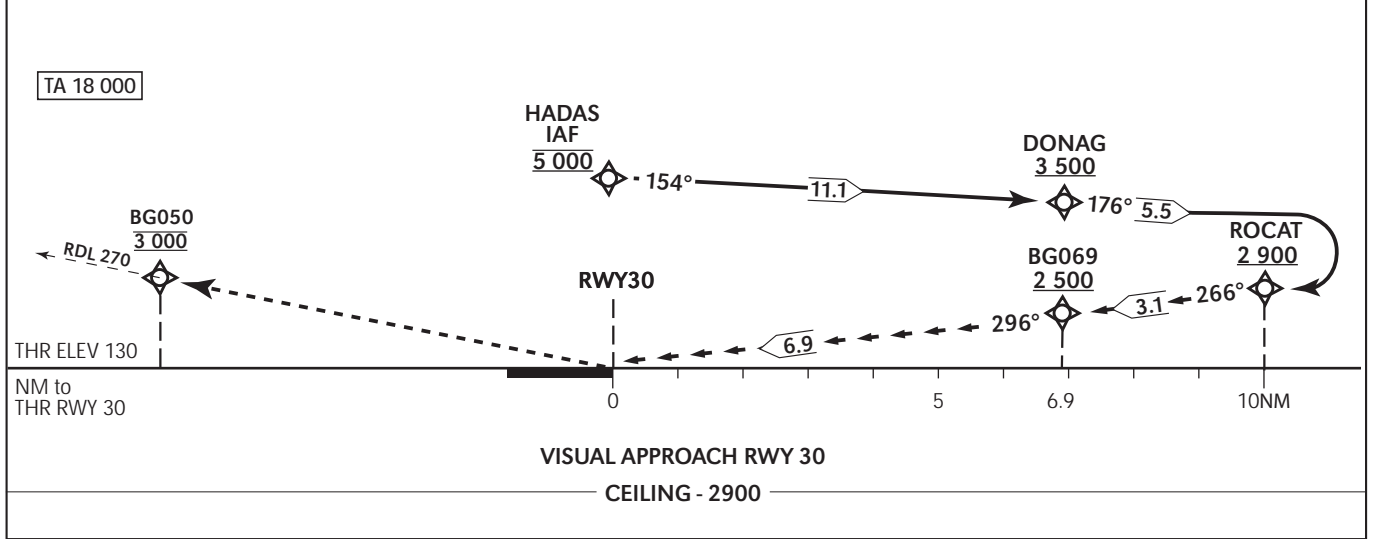
**TEL-AVIV / BEN-GURION  
(LLBG)  
DONAG APPROACH RWY 30**



**GO AROUND ON THE VISUAL SEGMENT OF THE APPROACH:**  
Initial climb 3 000. Climb on course 296°, at or above 700 (MAX 185 KIAS), Not before **DER 30**. Turn LEFT direct to **BG050** at 3 000 (MAX 220 KIAS). Continue on track 270°, climb to 5 000, contact **ATC** and expect instructions.

**Recommended crossing altitudes**

RWY30	2	3	4	5	6
ALT (HGT)	870 (740)	1 210 (1 080)	1 550 (1 420)	1 890 (1 760)	2 230 (2 100)



CHANGES: GO around coding changed, freq. changed, MISSED APPROACH description changed.

Procedure: DONAG APPROACH RWY 30

Navigation Specification	Path Descriptor (Recommended)	Waypoint Identifier	Latitude Longitude	Flyover	Course/Track M° (T°)	Turn Direction	Distance (NM)	Altitude (ft)	Speed (Kts)	Remarks
RNAV 1	IF	HADAS	32° 12' 13.0"N 034° 59' 40.0" E					@5 000	-	IAF
RNAV 1	TF	DONAG	32° 01' 50.4"N 035° 04' 20.6" E		154 (159.0)		11.1	+3 500	-230	
RNAV 1	TF	ROCAT	31° 56' 19.8"N 035° 04' 11.1" E		176 (181.4)	R	5.5	+2 900	-185	
RNP APCH	TF	BG069	31° 56' 24.4"N 035° 00' 32.6" E		266 (271.4)	R	3.1	+2 500	-185	
RNP APCH	TF	RWY30	31° 59' 59.9"N 034° 53' 39.1" E	Y	296 (301.4)	R	6.9	+180	-185	

Go Around

Navigation Specification	Path Descriptor (Recommended)	Waypoint Identifier	Latitude Longitude	Flyover	Course/Track M° (T°)	Turn Direction	Distance (NM)	Altitude (ft)	Speed (Kts)	Remarks
RNAV 1	TF	DER30	32° 00' 51.1"N 034° 52' 00.6" E	Y	296 (301.4)		1.7	+700	-185	
RNAV 1	CA				296 (301.4)			+700	-185	
RNAV 1	DF	BG050	32° 00' 55.9" N 034° 44' 05.9" E			L		@3 000	-220	
RNAV 1	FM				270 (275.4)			@5 000		