

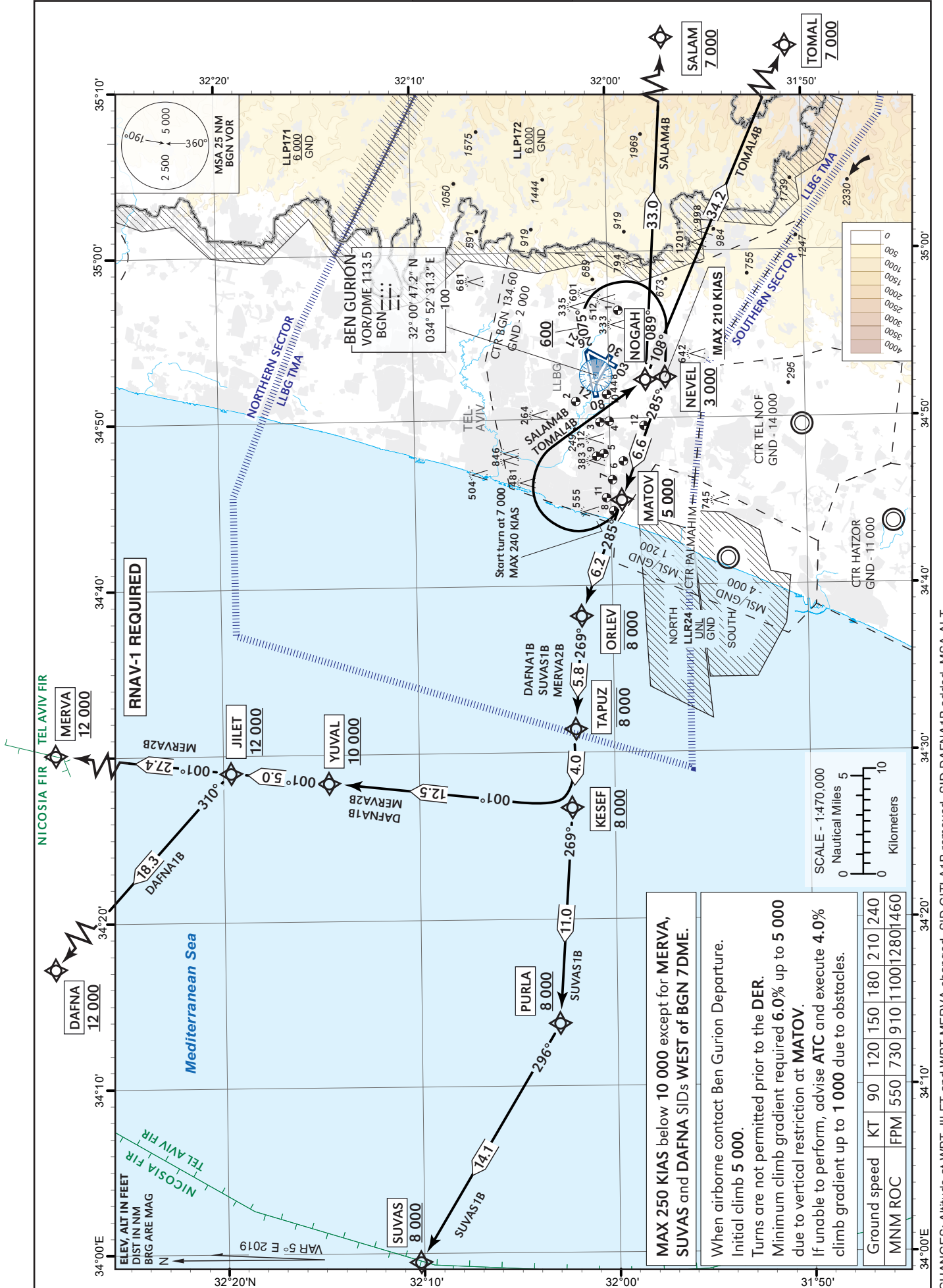
STANDARD INSTRUMENT  
DEPARTURE CHART  
(SID) - ICAO

TRANSITION  
ALTITUDE 18 000

ATIS departue 132.80  
TWR 134.60  
DEP 120.50  
ACC 121.40

TEL-AVIV / BEN-GURION (LLBG)  
RWY 08

SALAM4B, TOMAL4B, SUVAS1B, DAFNA1B, MERVA2B



Tabular description in AD 2.5-30A